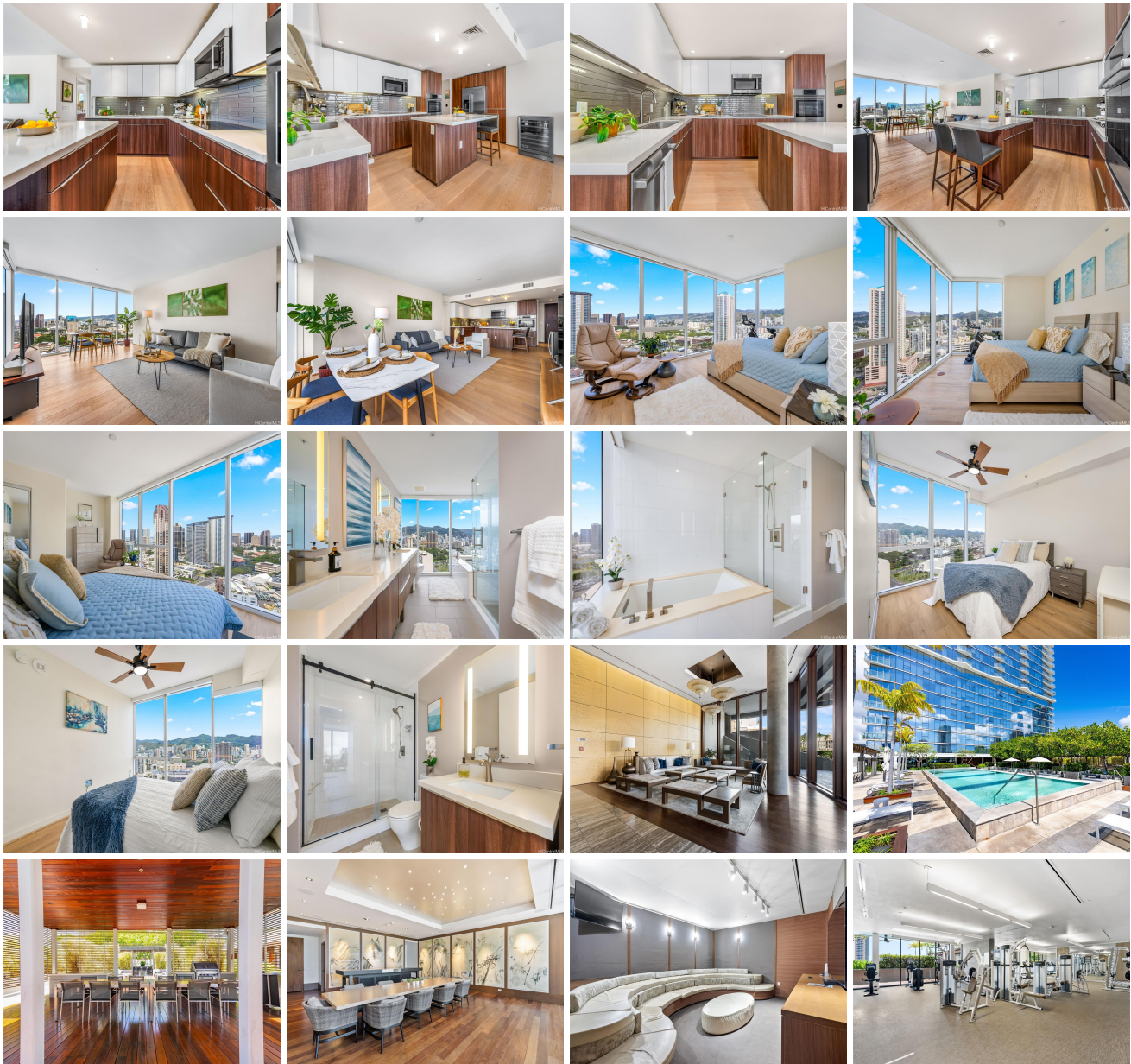


# **Symphony Honolulu 888 Kapiolani Boulevard Unit 2810, Honolulu 96813 \* Symphony**

**Honolulu \* \$1,230,000**

Beds: <b>2</b>	MLS#: <b>202403743, FS</b>	Year Built: <b>2016</b>
Bath: <b>2/0</b>	Status: <b>Active</b>	Remodeled:
Living Sq. Ft.: <b>1,142</b>	List Date & DOM: <b>03-15-2024 &amp; 124</b>	Total Parking: <b>2</b>
Land Sq. Ft.: <b>0</b>	Condition: <b>Excellent, Above Average</b>	<a href="#">Assessed Value</a>
Lanai Sq. Ft.: <b>0</b>	Frontage:	Building: <b>\$1,074,200</b>
Sq. Ft. Other: <b>0</b>	Tax/Year: <b>\$352/2024</b>	Land: <b>\$72,500</b>
Total Sq. Ft. <b>1,142</b>	Neighborhood: <b>Kakaako</b>	Total: <b>\$1,146,700</b>
Maint./Assoc. <b>\$984 / \$0</b>	<a href="#">Flood Zone</a> : <b>Zone X - Tool</b>	Stories / CPR: <b>21+ / No</b>
Parking: <b>Assigned, Covered - 2, Tandem</b>	Frontage:	
<a href="#">Zoning</a> : <b>Kak - Kakaako Community Development Project</b>	View: <b>City, Mountain, Ocean, Sunset</b>	

**Public Remarks:** Stunning CORNER END luxury residence with floor to ceiling windows capturing mountain to ocean, sunset & city views. This spacious 2-bedroom 2-bath 1142 sq ft residence features; Studio Becker Kitchen with European cabinetry, polished Quartz countertops, glass tile back splash, Bosch appliances, central AC, full size washer/dryer & engineered hardwood flooring in the living areas & LVT in the bedrooms, 2 tandem parking stalls near the elevator. Symphony Honolulu is home to 388 private condominium luxury residences with exclusive use of an expansive recreation deck featuring an infinity edge pool, sauna, gym, yoga studio, private cabanas, state of the art media room, BBQ areas, private guest suites, PV panels and more. Pet friendly (please verify) dog park, EV Charging Station, 24 hr. secured lobby, MUST SEE. Private Showings Only. **Sale Conditions:** None **Schools:** [Royal](#), [Keelikolani](#), [Mckinley](#) \* [Request Showing](#), [Photos](#), [History](#), [Maps](#), [Deed](#), [Watch List](#), [Tax Info](#)





Address	Price	Bd & Bth	Living / Avg.	Land   Avg.	Lanai	Occ.	FL	DOM
<a href="#">888 Kapiolani Boulevard 2810</a>	<a href="#">\$1,230,000</a>	2 & 2/0	1,142   \$1,077	0   \$inf	0	61%	26	124

Address	Tax   Maint.   Ass.	Assessed Land	Assessed Building	Assessed Total	Ratio	Year & Remodeled
<a href="#">888 Kapiolani Boulevard 2810</a>	\$352   \$984   \$0	\$72,500	\$1,074,200	\$1,146,700	107%	2016 & NA

[888 Kapiolani Boulevard 2810](#) - MLS#: [202403743](#) - Stunning CORNER END luxury residence with floor to ceiling windows capturing mountain to ocean, sunset & city views. This spacious 2-bedroom 2-bath 1142 sq ft residence features; Studio Becker Kitchen with European cabinetry, polished Quartz countertops, glass tile back splash, Bosch appliances, central AC, full size washer/dryer & engineered hardwood flooring in the living areas & LVT in the bedrooms, 2 tandem parking stalls near the elevator. Symphony Honolulu is home to 388 private condominium luxury residences with exclusive use of an expansive recreation deck featuring an infinity edge pool, sauna, gym, yoga studio, private cabanas, state of the art media room, BBQ areas, private guest suites, PV panels and more. Pet friendly (please verify) dog park, EV Charging Station, 24 hr. secured lobby, MUST SEE. Private Showings Only. **Region:** Metro **Neighborhood:** Kakaako **Condition:** Excellent, Above Average **Parking:** Assigned, Covered - 2, Tandem **Total Parking:** 2 **View:** City, Mountain, Ocean, Sunset **Frontage:** **Pool:** **Zoning:** Kak - Kakaako Community Development Project **Sale Conditions:** None **Schools:** [Royal](#), [Keelikolani](#), [Mckinley](#) \* [Request Showing](#), [Photos](#), [History](#), [Maps](#), [Deed](#), [Watch List](#), [Tax Info](#)

DOM = Days on Market, Occ. = Occupancy, FL = Floor Number