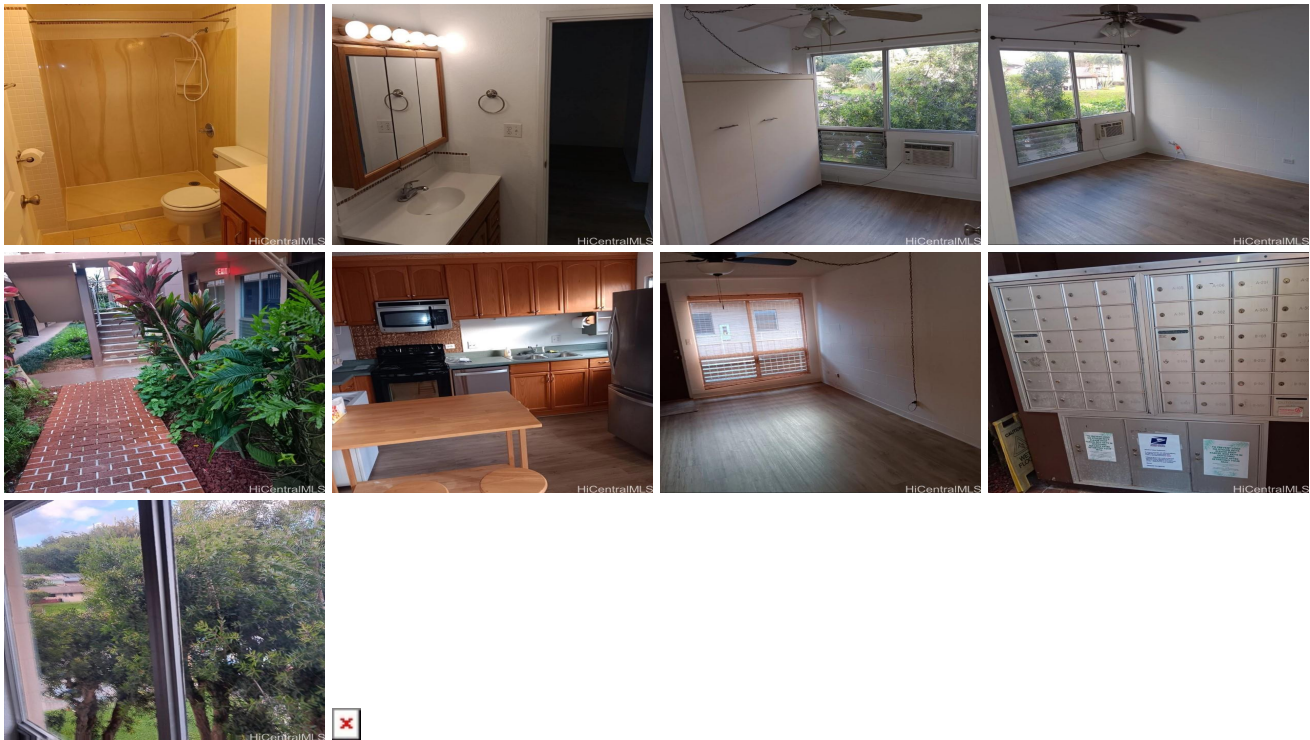


Kahaluu Gardens 47-420 Hui Iwa Street Unit A303, Kaneohe 96744 * Kahaluu Gardens *

\$430,000

Beds: 2 Bath: 1/0 Living Sq. Ft.: 653 Land Sq. Ft.: 46,174 Lanai Sq. Ft.: 0 Sq. Ft. Other: 0 Total Sq. Ft. 653 Maint./Assoc. \$422 / \$0 Parking: Assigned Zoning: 11 - A-1 Low Density Apartment	MLS#: 202403916, FS Status: Active List Date & DOM: 02-23-2024 & 141 Condition: Average Frontage: Other Tax/Year: \$115/2023 Neighborhood: Temple Valley Flood Zone: Zone D - Tool	Year Built: 1976 Remodeled: Total Parking: 1 Assessed Value Building: \$334,800 Land: \$79,700 Total: \$414,500 Stories / CPR: Three / No Frontage: Other View: Garden, Mountain
--	---	---

Public Remarks: Back on market On the beautiful Windward side of the island, between the majestic Koolau mountains and the Kahaluu hills, sits the quiet community of Ahuimanu. Adjacent to Temple Valley Shopping Center, with its movie complex, supermarket, eateries and more, for the few homes in this unique area of Kaneohe. Perfect for a first time buyer or great investment; this 2 bedroom condo has windows on opposite sides to give it great trade wind flows throughout the unit. Close access to your parking stall. Jump on the highway and be in town in 20 minutes, or 25 minutes to Pearl Harbor and the airport via the spectacular H3 Freeway. **Sale Conditions:** None **Schools:** [Ahuimanu](#), [King](#), [Castle](#) * [Request Showing](#), [Photos](#), [History](#), [Maps](#), [Deed](#), [Watch List](#), [Tax Info](#)



Address	Price	Bd & Bth	Living / Avg.	Land Avg.	Lanai	Occ.	FL	DOM
47-420 Hui Iwa Street A303	\$430,000	2 & 1/0	653 \$658	46,174 \$9	0	52%	3	141

Address	Tax Maint. Ass.	Assessed Land	Assessed Building	Assessed Total	Ratio	Year & Remodeled
47-420 Hui Iwa Street A303	\$115 \$422 \$0	\$79,700	\$334,800	\$414,500	104%	1976 & NA

[47-420 Hui Iwa Street A303](#) - MLS#: [202403916](#) - Back on market On the beautiful Windward side of the island, between the majestic Koolau mountains and the Kahaluu hills, sits the quiet community of Ahuimanu. Adjacent to Temple Valley Shopping Center, with its movie complex, supermarket, eateries and more, for the few homes in this unique area of Kaneohe. Perfect for a first time buyer or great investment; this 2 bedroom condo has windows on opposite sides to give it great trade wind flows throughout the unit. Close access to your parking stall. Jump on the highway and be in town in 20 minutes, or 25 minutes to Pearl Harbor and the airport via the spectacular H3 Freeway. **Region:** Kaneohe **Neighborhood:** Temple Valley **Condition:** Average **Parking:** Assigned **Total Parking:** 1 **View:** Garden, Mountain **Frontage:** Other **Pool:** **Zoning:** 11 - A-1 Low Density Apartment **Sale Conditions:** None **Schools:** [Ahuimanu](#), [King](#), [Castle](#) * [Request Showing](#), [Photos](#), [History](#), [Maps](#), [Deed](#), [Watch List](#), [Tax Info](#)

DOM = Days on Market, Occ. = Occupancy, FL = Floor Number