

**Sans Souci Inc 2877 Kalakaua Avenue Unit 301, Honolulu 96815 \* \$799,000 \* Originally**

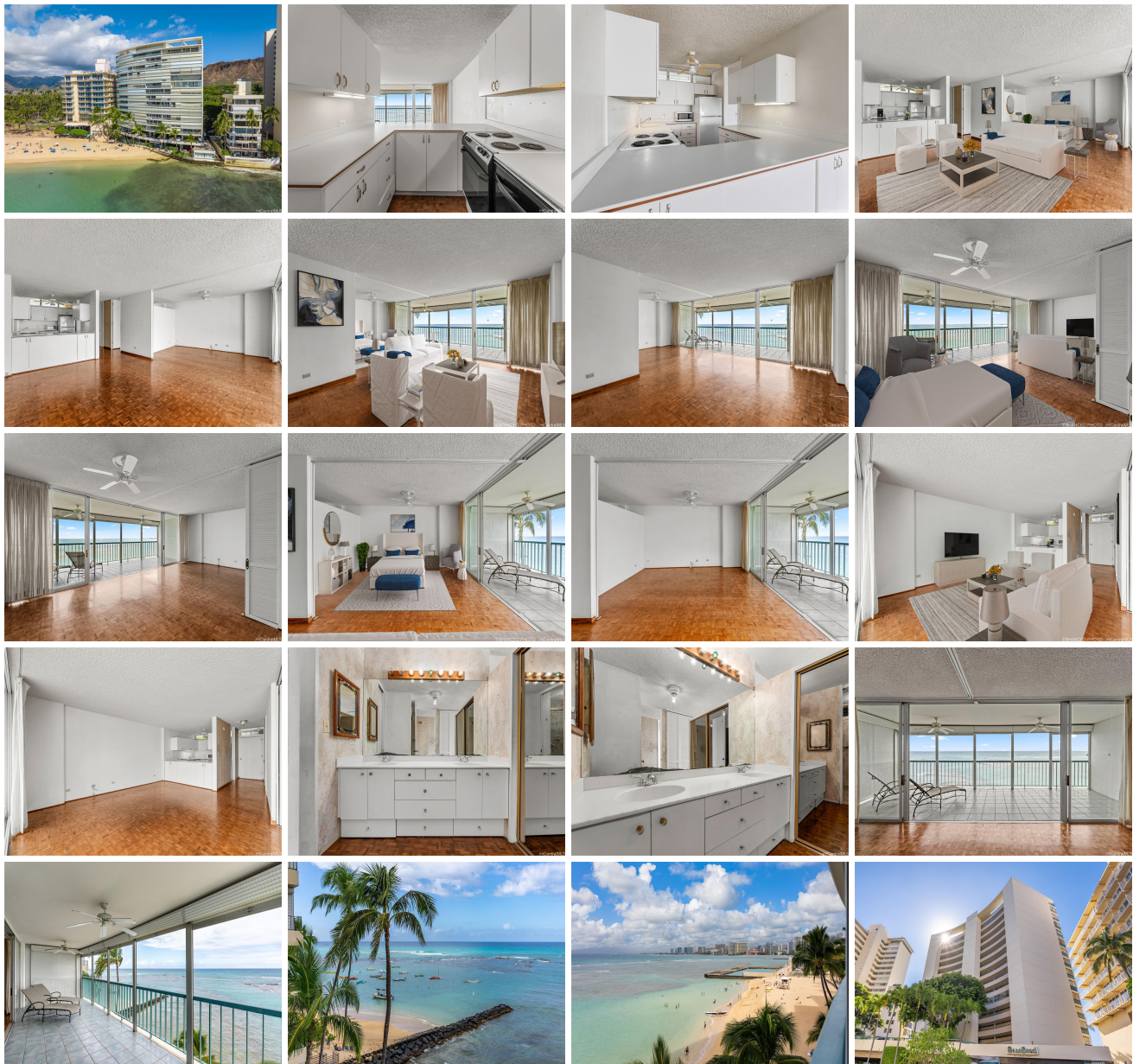
**\$1,075,000**

|   |  |                                |
|---|--|--------------------------------|
| Beds: <b>1</b>  | MLS#: <b>202404255, LH</b>                         | Year Built: <b>1960</b>        |
| Bath: <b>1/0</b>  | Status: <b>Active</b>                              | Remodeled:                     |
| Living Sq. Ft.: <b>701</b>                                  | List Date & DOM: <b>03-19-2024 &amp; 118</b>       | Total Parking: <b>1</b>        |
| Land Sq. Ft.: <b>0</b>                                      | Condition: <b>Average</b>                          | <a href="#">Assessed Value</a> |
| Lanai Sq. Ft.: <b>243</b>                                   | Frontage:  | Building: <b>\$1,065,600</b>   |
| Sq. Ft. Other: <b>0</b>                                     | Tax/Year: <b>\$0/2023</b>                          | Land: <b>\$124,600</b>         |
| Total Sq. Ft. <b>944</b>                                    | Neighborhood: <b>Diamond Head</b>                  | Total: <b>\$1,190,200</b>      |
| Maint./Assoc. <b>\$1,020 / \$0</b>                          | <a href="#">Flood Zone</a> : <b>Zone AE - Tool</b> | Stories / CPR: / <b>No</b>     |
| Parking: <b>Assigned, Covered - 1, Guest, Secured Entry</b> | Frontage:  |                                |

**Zoning: 12 - A-2 Medium Density Apartme**

**View: City, Coastline, Ocean, Sunset**

**Public Remarks:** Discover the potential of beachfront living on Oahu's prestigious Gold Coast with this well positioned 1-bedroom condo in the iconic Sans Souci building. Offering a canvas for your personal touch, this unit presents an unparalleled opportunity to create your dream oceanfront home or investment property amidst the breathtaking natural beauty overlooking Kaimana beach and the Waikiki coastline. Unit #301 invites you to envision the transformation, with generous spaces ready for renovation and customization. The layout is perfectly poised for a modern makeover, featuring an open-concept living area that effortlessly extends onto a large private lanai. Here, the panoramic views of the Pacific Ocean await your personal design flair to enhance the indoor-outdoor living experience that Sans Souci offers so well. This condo offers the opportunity to craft a luxurious living space tailored to your dreams and desires and allows you a lifestyle defined by convenience, and the timeless appeal of Hawaii's Gold Coast. **Sale Conditions:** None **Schools:** [Waikiki](#), [Kaimuki](#), [Kaimuki](#) \* [Request Showing](#), [Photos](#), [History](#), [Maps](#), [Deed](#), [Watch List](#), [Tax Info](#)





| Address                                  | Price               | Bd & Bth | Living / Avg. | Land   Avg. | DOM |
|--|---------------------|----------|---------------|-------------|-----|
| <a href="#">2877 Kalakaua Avenue 301</a> | <b>\$799,000 LH</b> | 1 & 1/0  | 701   \$1,140 | 0   \$inf   | 118 |

| Address                                  | Tax   Maint.   Ass. | Assessed Land | Assessed Building | Assessed Total | Ratio | Year & Remodeled |
|--|---------------------|---------------|-------------------|----------------|-------|------------------|
| <a href="#">2877 Kalakaua Avenue 301</a> | \$0   \$1,020   \$0 | \$124,600     | \$1,065,600       | \$1,190,200    | 67%   | 1960 & NA        |

[2877 Kalakaua Avenue 301](#) - MLS#: [202404255](#) - Original price was \$1,075,000 - Discover the potential of beachfront living on Oahu's prestigious Gold Coast with this well positioned 1-bedroom condo in the iconic Sans Souci building. Offering a canvas for your personal touch, this unit presents an unparalleled opportunity to create your dream oceanfront home or investment property amidst the breathtaking natural beauty overlooking Kaimana beach and the Waikiki coastline. Unit #301 invites you to envision the transformation, with generous spaces ready for renovation and customization. The layout is perfectly poised for a modern makeover, featuring an open-concept living area that effortlessly extends onto a large private lanai. Here, the panoramic views of the Pacific Ocean await your personal design flair to enhance the indoor-outdoor living experience that San Souci offers so well. This condo offers the opportunity to craft a luxurious living space tailored to your dreams and desires and allows you a lifestyle defined by convenience, and the timeless appeal of Hawaii's Gold Coast.

**Region:** Diamond Head **Neighborhood:** Diamond Head **Condition:** Average **Parking:** Assigned, Covered - 1, Guest, Secured Entry **Total Parking:** 1 **View:** City, Coastline, Ocean, Sunset **Frontage:** **Pool:** **Zoning:** 12 - A-2 Medium Density Apartme **Sale Conditions:** None **Schools:** [Waikiki](#), [Kaimuki](#), [Kaimuki](#) \* [Request Showing](#), [Photos](#), [History](#), [Maps](#), [Deed](#), [Watch List](#), [Tax Info](#)

DOM = Days on Market