

Kaimana Lanais 2444 Hihwai Street Unit 2205, Honolulu 96826 * Kaimana Lanais *

\$525,000

Beds: **1**
Bath: **1/0**
Living Sq. Ft.: **565**
Land Sq. Ft.: **21,432**
Lanai Sq. Ft.: **245**
Sq. Ft. Other: **0**
Total Sq. Ft. **810**
Maint./Assoc. **\$876 / \$0**

MLS#: **202404354, FS**
Status: **Active**
List Date & DOM: **02-29-2024 & 122**
Condition: **Above Average**
Frontage:
Tax/Year: **\$141/2023**
Neighborhood: **Kapiolani**
Flood Zone: Zone A - Tool

Year Built: **1974**
Remodeled: **2023**
Total Parking: **1**
[Assessed Value](#)
Building: **\$440,800**
Land: **\$41,000**
Total: **\$481,800**
Stories / CPR: **21+ / No**

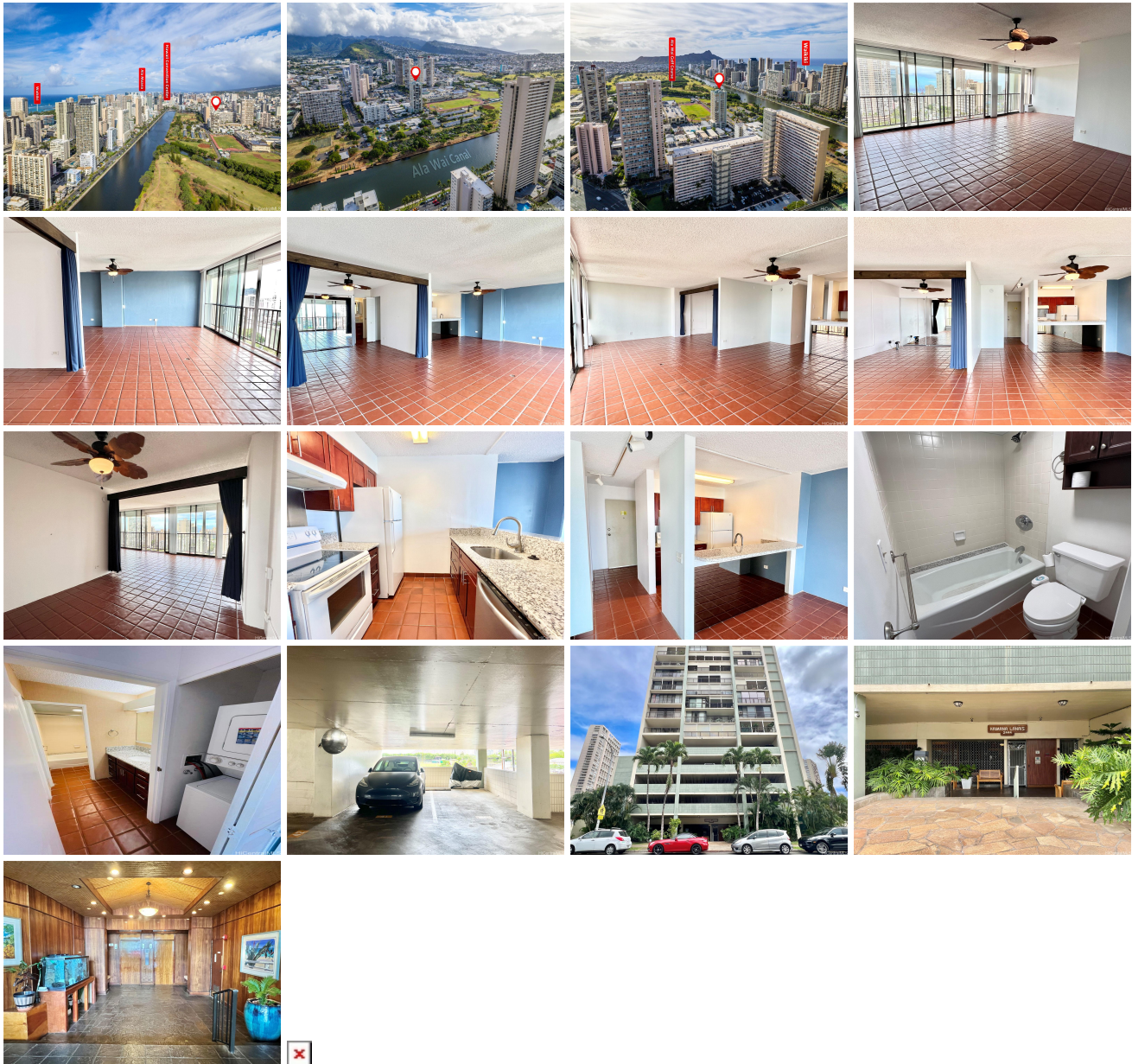
Parking: **Assigned, Covered - 1, Garage**

Zoning: 13 - A-3 High Density Apartment

Frontage:

View: **Marina/Canal, Ocean**

Public Remarks: Discover island living at Kaimana Lanais, centrally located near Iolani School, Ala Wai Elementary School, and Ala Wai Community Park. A 7-minute drive to UH Manoa campus. This unit features an enclosed lanai with stunning views of Waikiki and the ocean. It offers a flexible layout for an open concept or cozy one-bedroom configuration, with an in-unit washer and dryer. Kaimana Lanais provides amenities like a pool, sauna, BBQ grills, recreation room, storage, car wash area, and a resident manager. One secured parking stall included. Enjoy a 180-degree panorama of Waikiki and the Ala Wai Canal. Currently leased until 9/30/24 at \$2,250 plus GET. Showings by appointment with 48-hour notice. No open house events. **Sale Conditions:** None **Schools:** [Ala Wai](#), [Washington](#), [Kaimuki](#) * [Request Showing](#), [Photos](#), [History](#), [Maps](#), [Deed](#), [Watch List](#), [Tax Info](#)



Address	Price	Bd & Bth	Living / Avg.	Land Avg.	Lanai	Occ.	FL	DOM
2444 Hihiwai Street 2205	\$525,000	1 & 1/0	565 \$929	21,432 \$24	245	41%	22	122

Address	Tax Maint. Ass.	Assessed Land	Assessed Building	Assessed Total	Ratio	Year & Remodeled
2444 Hihiwai Street 2205	\$141 \$876 \$0	\$41,000	\$440,800	\$481,800	109%	1974 & 2023

[2444 Hihiwai Street 2205](#) - MLS#: [202404354](#) - Discover island living at Kaimana Lanais, centrally located near Iolani School, Ala Wai Elementary School, and Ala Wai Community Park. A 7-minute drive to UH Manoa campus. This unit features an enclosed lanai with stunning views of Waikiki and the ocean. It offers a flexible layout for an open concept or cozy one-bedroom configuration, with an in-unit washer and dryer. Kaimana Lanais provides amenities like a pool, sauna, BBQ grills, recreation room, storage, car wash area, and a resident manager. One secured parking stall included. Enjoy a 180-degree panorama of Waikiki and the Ala Wai Canal. Currently leased until 9/30/24 at \$2,250 plus GET. Showings by appointment with 48-hour notice. No open house events. **Region:** Metro **Neighborhood:** Kapiolani **Condition:** Above Average **Parking:** Assigned, Covered - 1, Garage **Total Parking:** 1 **View:** Marina/Canal, Ocean **Frontage:** **Pool:** **Zoning:** 13 - A-3 High Density Apartment **Sale Conditions:** None **Schools:** [Ala Wai](#), [Washington](#), [Kaimuki](#) * [Request Showing](#), [Photos](#), [History](#), [Maps](#), [Deed](#), [Watch List](#), [Tax Info](#)

DOM = Days on Market, Occ. = Occupancy, FL = Floor Number