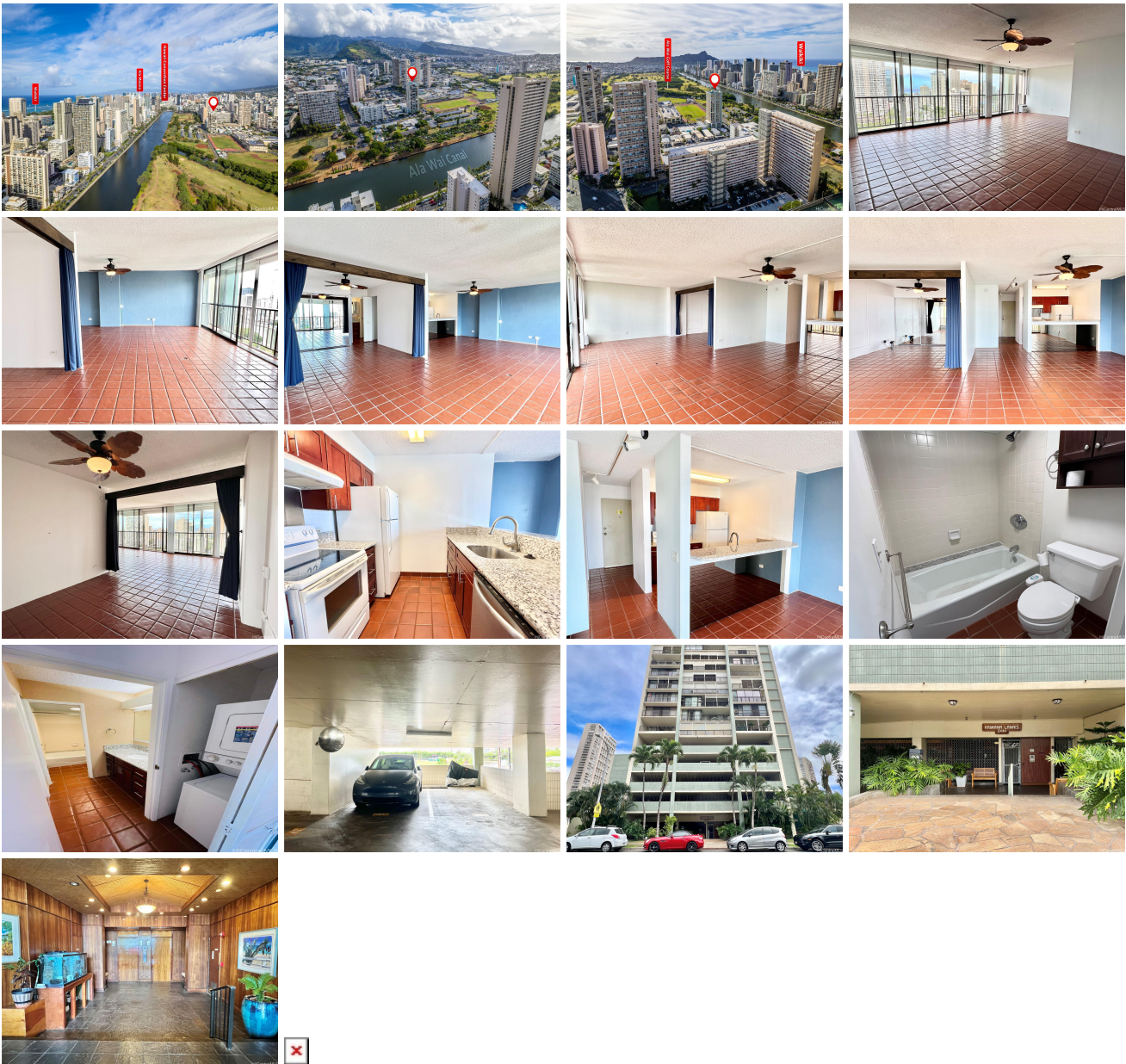


Kaimana Lanais 2444 Hihwai Street Unit 2205, Honolulu 96826 * \$525,000

Beds: 1	MLS#: <u>202404354</u>, FS	Year Built: 1974
Bath: 1/0	Status: Active	Remodeled: 2023
Living Sq. Ft.: 565	List Date & DOM: 02-29-2024 & 139	Total Parking: 1
Land Sq. Ft.: 21,432	Condition: Above Average	Assessed Value
Lanai Sq. Ft.: 245	Frontage:	Building: \$440,800
Sq. Ft. Other: 0	Tax/Year: \$141/2023	Land: \$41,000
Total Sq. Ft. 810	Neighborhood: Kapiolani	Total: \$481,800
Maint./Assoc. \$876 / \$0	Flood Zone : Zone A - Tool	Stories / CPR: 21+ / No
Parking: Assigned, Covered - 1, Garage	Frontage:	
Zoning : 13 - A-3 High Density Apartment	View: Marina/Canal, Ocean	

Public Remarks: Discover island living at Kaimana Lanais, centrally located near Iolani School, Ala Wai Elementary School, and Ala Wai Community Park. A 7-minute drive to UH Manoa campus. This unit features an enclosed lanai with stunning views of Waikiki and the ocean. It offers a flexible layout for an open concept or cozy one-bedroom configuration, with an in-unit washer and dryer. Kaimana Lanais provides amenities like a pool, sauna, BBQ grills, recreation room, storage, car wash area, and a resident manager. One secured parking stall included. Enjoy a 180-degree panorama of Waikiki and the Ala Wai Canal. Currently leased until 9/30/24 at \$2,250 plus GET. Showings by appointment with 48-hour notice. No open house events. **Sale Conditions:** None **Schools:** [Ala Wai](#), [Washington](#), [Kaimuki](#) * [Request Showing](#), [Photos](#), [History](#), [Maps](#), [Deed](#), [Watch List](#), [Tax Info](#)



Address	Price	Bd & Bth	Living / Avg.	Land Avg.	DOM
---------	-------	----------	---------------	-------------	-----

2444 Hihiwai Street 2205	\$525,000	1 & 1/0	565 \$929	21,432 \$24	139
--	---------------------------	---------	-------------	---------------	-----

Address	Tax Maint. Ass.	Assessed Land	Assessed Building	Assessed Total	Ratio	Year & Remodeled
2444 Hihiwai Street 2205	\$141 \$876 \$0	\$41,000	\$440,800	\$481,800	109%	1974 & 2023

[2444 Hihiwai Street 2205](#) - MLS#: [202404354](#) - Discover island living at Kaimana Lanais, centrally located near Iolani School, Ala Wai Elementary School, and Ala Wai Community Park. A 7-minute drive to UH Manoa campus. This unit features an enclosed lanai with stunning views of Waikiki and the ocean. It offers a flexible layout for an open concept or cozy one-bedroom configuration, with an in-unit washer and dryer. Kaimana Lanais provides amenities like a pool, sauna, BBQ grills, recreation room, storage, car wash area, and a resident manager. One secured parking stall included. Enjoy a 180-degree panorama of Waikiki and the Ala Wai Canal. Currently leased until 9/30/24 at \$2,250 plus GET. Showings by appointment with 48-hour notice. No open house events. **Region:** Metro **Neighborhood:** Kapiolani **Condition:** Above Average **Parking:** Assigned, Covered - 1, Garage **Total Parking:** 1 **View:** Marina/Canal, Ocean **Frontage:** **Pool:** **Zoning:** 13 - A-3 High Density Apartment **Sale Conditions:** None **Schools:** [Ala Wai](#), [Washington](#), [Kaimuki](#) * [Request Showing](#), [Photos](#), [History](#), [Maps](#), [Deed](#), [Watch List](#), [Tax Info](#)

DOM = Days on Market