

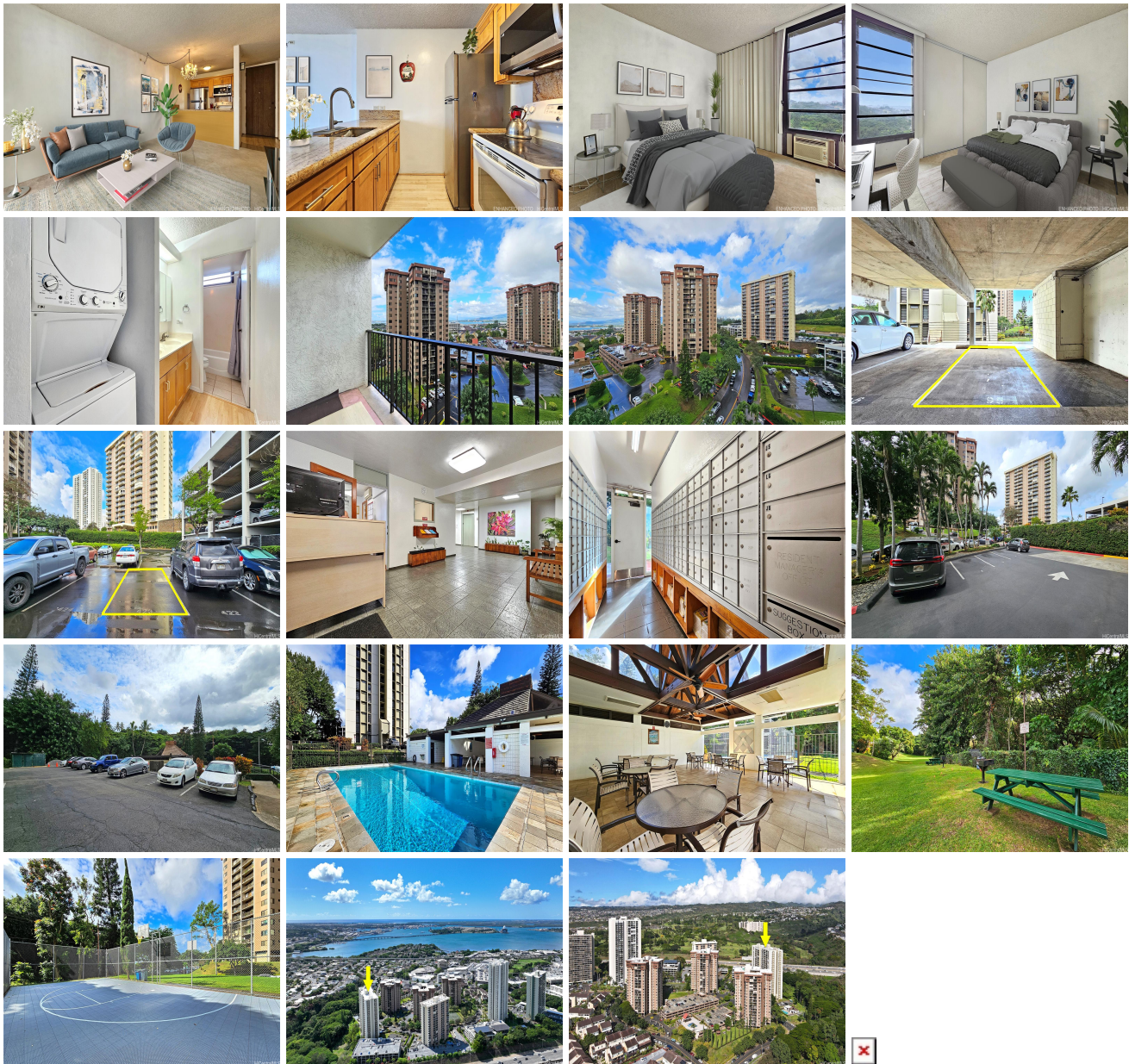
**Pearl 1 98-500 Koauka Loop Unit 10H, Aiea 96701 \* \$525,000**

Beds: <b>2</b>	MLS#: <b>202404414, FS</b>	Year Built: <b>1975</b>
Bath: <b>1/0</b>	Status: <b>Active</b>	Remodeled:
Living Sq. Ft.: <b>840</b>	List Date & DOM: <b>02-28-2024 &amp; 140</b>	Total Parking: <b>2</b>
Land Sq. Ft.: <b>0</b>	Condition: <b>Above Average</b>	<a href="#">Assessed Value</a>
Lanai Sq. Ft.: <b>64</b>	Frontage:	Building: <b>\$300,900</b>
Sq. Ft. Other: <b>0</b>	Tax/Year: <b>\$96/2023</b>	Land: <b>\$166,000</b>
Total Sq. Ft. <b>904</b>	Neighborhood: <b>Pearlridge</b>	Total: <b>\$466,900</b>
Maint./Assoc. <b>\$707 / \$0</b>	<a href="#">Flood Zone</a> : <b>Zone AE - Tool</b>	Stories / CPR: / <b>No</b>
Parking: <b>Assigned, Covered - 1, Guest, Open - 1</b>	Frontage:	

**Zoning: 12 - A-2 Medium Density Apartme**

**View: City, Mountain, Ocean, Sunset**

**Public Remarks:** Comfortable, cool, corner/end 2-bedroom unit with 2 parking stalls and lanai. Enjoy nice views of Pearl Harbor and mountain ranges and the great benefit of being conveniently located within minutes to everything you need- Pearlridge, Pali Momi Medical Center, Straub and Kaiser clinics, banks, restaurants, military bases, schools, Pearl at Kaluaao golf course, Newtown driving range, theaters, Down to Earth, Safeway, Pearlridge Farmer's Market, bus stops, and more. Great opportunity to live and own in this desirable neighborhood. **Sale Conditions:** None **Schools:** [Alvah Scott](#), [Aiea](#), [Aiea](#) \* [Request Showing](#), [Photos](#), [History](#), [Maps](#), [Deed](#), [Watch List](#), [Tax Info](#)



Address	Price	Bd & Bth	Living / Avg.	Land   Avg.	DOM
<a href="#">98-500 Koauka Loop 10H</a>	<a href="#">\$525,000</a>	2 & 1/0	840   \$625	0   \$inf	140

Address	Tax   Maint.   Ass.	Assessed Land	Assessed Building	Assessed Total	Ratio	Year & Remodeled
<a href="#">98-500 Koauka Loop 10H</a>	\$96   \$707   \$0	\$166,000	\$300,900	\$466,900	112%	1975 & NA

[98-500 Koauka Loop 10H](#) - MLS#: [202404414](#) - Comfortable, cool, corner/end 2-bedroom unit with 2 parking stalls and lanai. Enjoy nice views of Pearl Harbor and mountain ranges and the great benefit of being conveniently located within minutes to everything you need- Pearlridge, Pali Momi Medical Center, Straub and Kaiser clinics, banks, restaurants, military bases, schools, Pearl at Kalauao golf course, Newtown driving range, theaters, Down to Earth, Safeway, Pearlridge Farmer's Market, bus stops, and more. Great opportunity to live and own in this desirable neighborhood. **Region:** Pearl City **Neighborhood:** Pearlridge **Condition:** Above Average **Parking:** Assigned, Covered - 1, Guest, Open - 1 **Total Parking:** 2 **View:** City, Mountain, Ocean, Sunset **Frontage:** **Pool:** **Zoning:** 12 - A-2 Medium Density Apartme **Sale Conditions:** None **Schools:** [Alvah Scott](#), [Aiea](#), [Aiea](#) \* [Request Showing](#), [Photos](#), [History](#), [Maps](#), [Deed](#), [Watch List](#), [Tax Info](#)

DOM = Days on Market