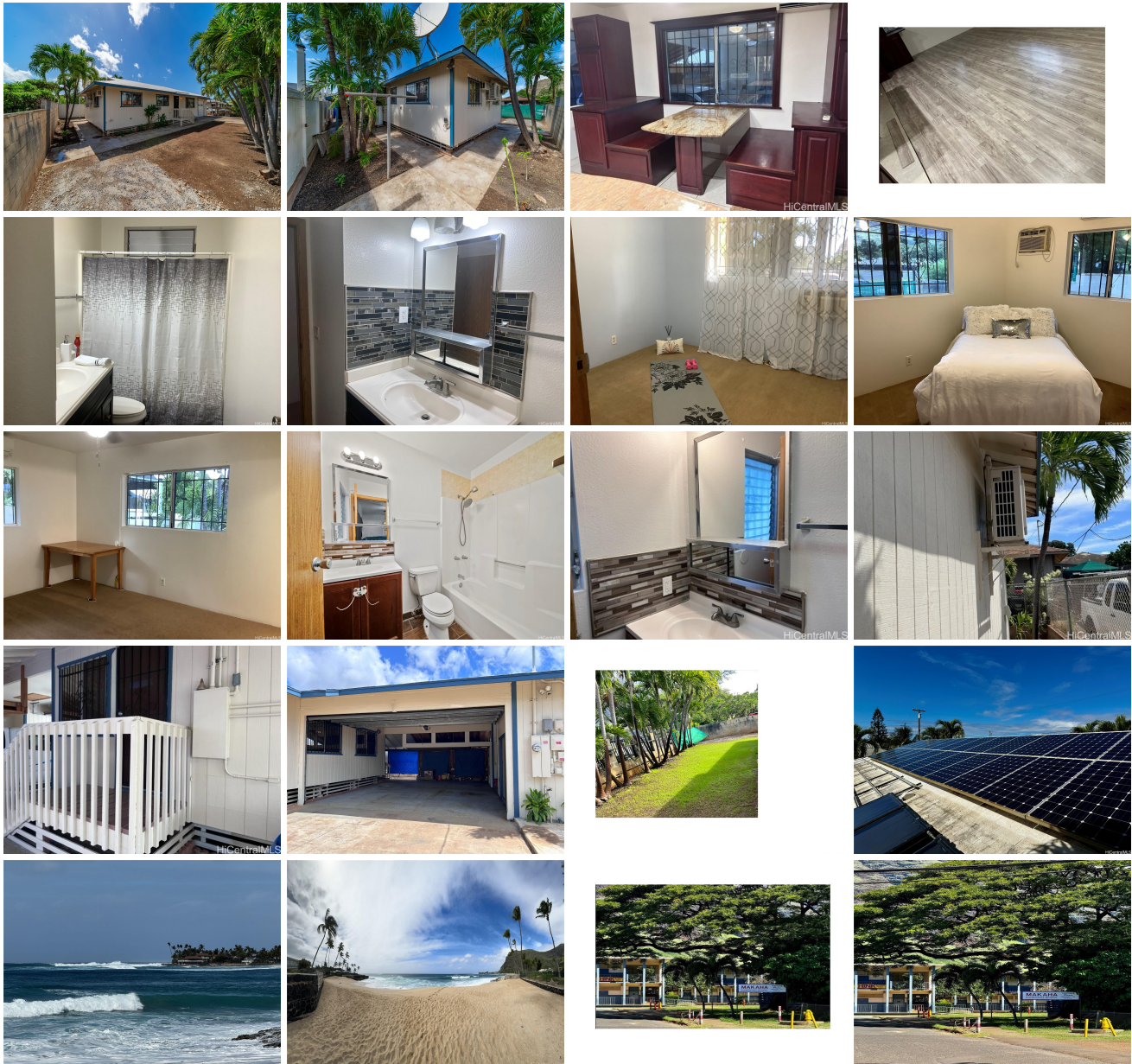


84-215 Ala Naauao Place, Waianae 96792 * * \$759,900 * Originally \$820,000

Beds: 3	MLS#: 202404490, FS	Year Built: 1989
Bath: 2/0	Status: Active	Remodeled:
Living Sq. Ft.: 1,104	List Date & DOM: 02-29-2024 & 139	Total Parking: 3
Land Sq. Ft.: 5,033	Condition: Above Average	Assessed Value
Lanai Sq. Ft.: 0	Frontage:	Building: \$118,200
Sq. Ft. Other: 0	Tax/Year: \$85/2023	Land: \$465,800
Total Sq. Ft. 1,104	Neighborhood: Makaha	Total: \$584,000
Maint./Assoc. \$0 / \$0	Flood Zone : Zone X - Tool	Stories / CPR: One / No
Parking: 3 Car+, Garage, Street	Frontage:	
Zoning : 05 - R-5 Residential District	View: Mountain	

Public Remarks: Motivated seller, bring your best offer. This loved and lived-in home consists of 3-BR/2-BA, a spacious garage, and a yard to soak up some sun or enjoy an outdoor BBQ under the mature trees and foliage. The property is a short distance from Makaha Elementary School. Washer and dryer hookups are available (stacked or side-by-side). There is plenty of outdoor space to make it your haven away from the day-to-day and enjoy the beautiful mountain views. Quad outlets are installed outside. The home is serviced with a 200-amp electrical panel. The spacious kitchen is beautifully designed to host get-togethers with a welcoming island to gather friends. Imagine the possibilities to customize this home to your taste and add your personal touches! A Direct TV satellite dish and Antenna exist on the recoated roof and is also equipped with a state-of-the-art photovoltaic system. Even the water heater operates under solar. The home's windows are tinted, the living room AC unit is 36,000 btu, and the bedrooms AC units are 12,000 btu/each. **Sale Conditions:** None **Schools:** [Makaha](#), [Waianae](#), [Waianae](#) * [Request Showing](#), [Photos](#), [History](#), [Maps](#), [Deed](#), [Watch List](#), [Tax Info](#)



Address	Price	Bd & Bth	Living / Avg.	Land Avg.	Lanai	Occ.	FL	DOM
84-215 Ala Naauao Place	\$759,900	3 & 2/0	1,104 \$688	5,033 \$151	0	0%	0	139

Address	Tax Maint. Ass.	Assessed Land	Assessed Building	Assessed Total	Ratio	Year & Remodeled
84-215 Ala Naauao Place	\$85 \$0 \$0	\$465,800	\$118,200	\$584,000	130%	1989 & NA

[84-215 Ala Naauao Place](#) - MLS#: [202404490](#) - Original price was \$820,000 - Motivated seller, bring your best offer. This loved and lived-in home consists of 3-BR/2-BA, a spacious garage, and a yard to soak up some sun or enjoy an outdoor BBQ under the mature trees and foliage. The property is a short distance from Makaha Elementary School. Washer and dryer hookups are available (stacked or side-by-side). There is plenty of outdoor space to make it your haven away from the day-to-day and enjoy the beautiful mountain views. Quad outlets are installed outside. The home is serviced with a 200-amp electrical panel. The spacious kitchen is beautifully designed to host get-togethers with a welcoming island to gather friends. Imagine the possibilities to customize this home to your taste and add your personal touches! A Direct TV satellite dish and Antenna exist on the recoated roof and is also equipped with a state-of-the-art photovoltaic system. Even the water heater operates under solar. The home's windows are tinted, the living room AC unit is 36,000 btu, and the bedrooms AC units are 12,000 btu/each. **Region:** Leeward **Neighborhood:** Makaha **Condition:** Above Average **Parking:** 3 Car+, Garage, Street **Total Parking:** 3 **View:** Mountain **Frontage:** **Pool:** None **Zoning:** 05 - R-5 Residential District **Sale Conditions:** None **Schools:** [Makaha](#), [Waianae](#), [Waianae](#) * [Request Showing](#), [Photos](#), [History](#), [Maps](#), [Deed](#), [Watch List](#), [Tax Info](#)

DOM = Days on Market, Occ. = Occupancy, FL = Floor Number