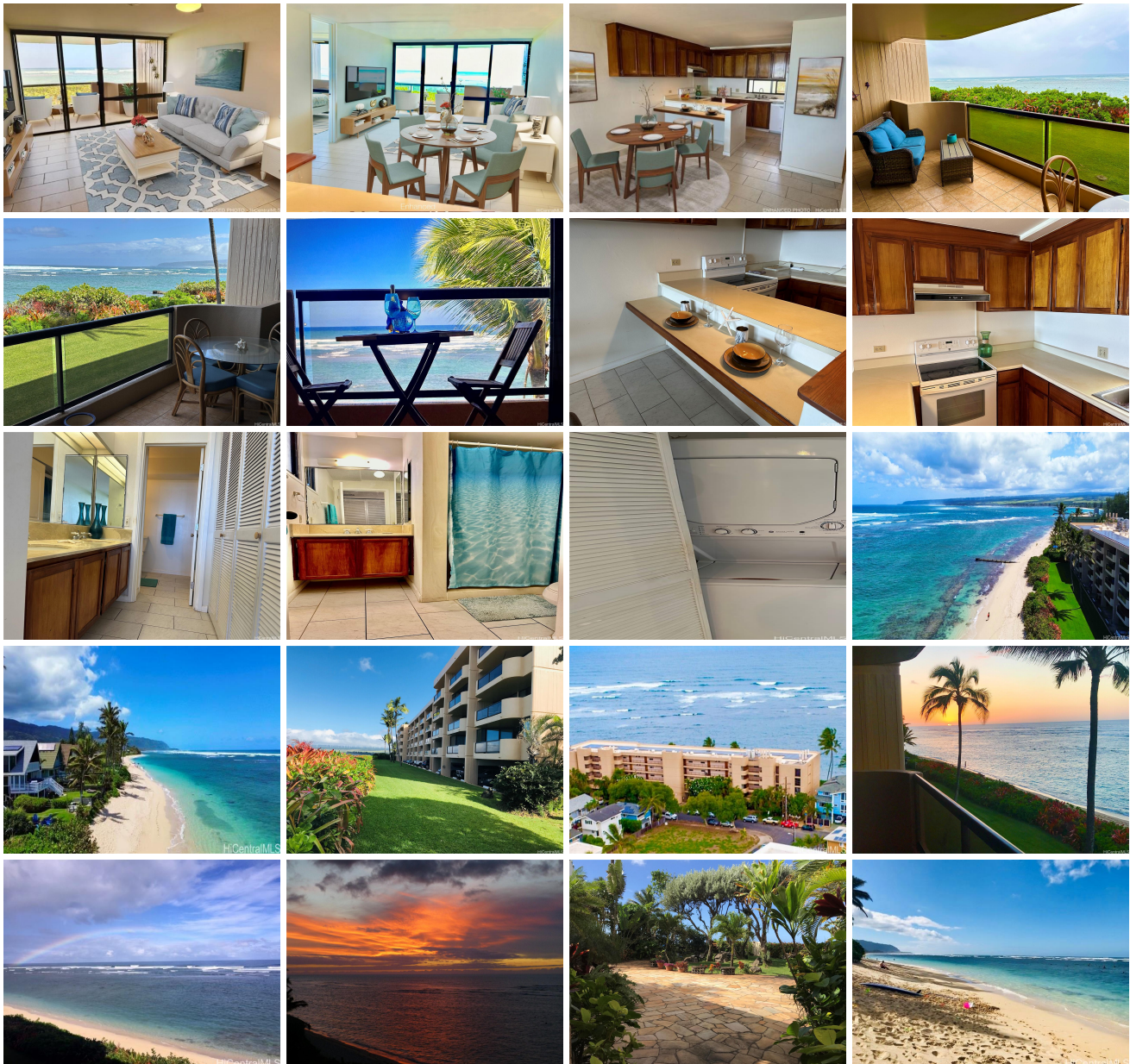


**Konane Kai 68-155 Au Street Unit 105, Waialua 96791 \* Konane Kai \* \$845,000 \* Originally \$875,000**

|   |  |                                |
|---|--|--------------------------------|
| Beds: <b>1</b>  | MLS#: <b>202405925, FS</b>                         | Year Built: <b>1980</b>        |
| Bath: <b>2/0</b>  | Status: <b>Active</b>                              | Remodeled: <b>2015</b>         |
| Living Sq. Ft.: <b>893</b>                                      | List Date & DOM: <b>03-06-2024 &amp; 116</b>       | Total Parking: <b>1</b>        |
| Land Sq. Ft.: <b>48,961</b>                                     | Condition: <b>Above Average</b>                    | <a href="#">Assessed Value</a> |
| Lanai Sq. Ft.: <b>180</b>                                       | Frontage: <b>Ocean, Sandy Beach</b>                | Building: <b>\$564,200</b>     |
| Sq. Ft. Other: <b>0</b>   | Tax/Year: <b>\$209/2023</b>                        | Land: <b>\$151,900</b>         |
| Total Sq. Ft. <b>1,073</b>                                      | Neighborhood: <b>Waialua</b>                       | Total: <b>\$716,100</b>        |
| Maint./Assoc. <b>\$661 / \$0</b>                                | <a href="#">Flood Zone</a> : <b>Zone VE - Tool</b> | Stories / CPR: <b>One / No</b> |
| Parking: <b>Assigned, Covered - 1, Garage, Secured Entry</b>    | Frontage: <b>Ocean, Sandy Beach</b>                |                                |
| <a href="#">Zoning</a> : <b>12 - A-2 Medium Density Apartme</b> | View: <b>Coastline, Ocean, Sunrise, Sunset</b>     |                                |

**Public Remarks:** Immerse yourself in the serene ambiance of the ocean, as the soothing sounds and Pacific views fill every room in the home. Perched along the picturesque coastline of Waialua, this stunning beachfront condo offers a oceanfront retreat with panoramic views of the ocean and rolling surf. Step outside onto the spacious lanai for dining, relaxing or reveling in the coastal views. Direct access to sandy beach where you can stroll for miles along pristine sand. Use the gym in the building while watching the surf. Pool, saunas, whirlpool and BBQ are additional amenities. Experience coastal living with this beautifully appointed home with endless opportunities for relaxation and recreation. **Sale Conditions:** None **Schools:** [Waialua, Waialua, Waialua](#) \* [Request Showing](#), [Photos](#), [History](#), [Maps](#), [Deed](#), [Watch List](#), [Tax Info](#)





| Address                              | Price            | Bd & Bth | Living / Avg. | Land   Avg.   | Lanai | Occ. | FL | DOM |
|--------------------------------------|------------------|----------|---------------|---------------|-------|------|----|-----|
| <a href="#">68-155 Au Street 105</a> | <b>\$845,000</b> | 1 & 2/0  | 893   \$946   | 48,961   \$17 | 180   | 52%  | 2  | 116 |

| Address                              | Tax   Maint.   Ass. | Assessed Land | Assessed Building | Assessed Total | Ratio | Year & Remodeled |
|--------------------------------------|---------------------|---------------|-------------------|----------------|-------|------------------|
| <a href="#">68-155 Au Street 105</a> | \$209   \$661   \$0 | \$151,900     | \$564,200         | \$716,100      | 118%  | 1980 & 2015      |

[68-155 Au Street 105](#) - MLS#: [202405925](#) - Original price was \$875,000 - Immerse yourself in the serene ambiance of the ocean, as the soothing sounds and Pacific views fill every room in the home. Perched along the picturesque coastline of Waialua, this stunning beachfront condo offers a oceanfront retreat with panoramic views of the ocean and rolling surf. Step outside onto the spacious lanai for dining, relaxing or reveling in the coastal views. Direct access to sandy beach where you can stroll for miles along pristine sand. Use the gym in the building while watching the surf. Pool, saunas, whirlpool and BBQ are additional amenities. Experience coastal living with this beautifully appointed home with endless opportunities for relaxation and recreation. **Region:** North Shore **Neighborhood:** Waialua **Condition:** Above Average **Parking:** Assigned, Covered - 1, Garage, Secured Entry **Total Parking:** 1 **View:** Coastline, Ocean, Sunrise, Sunset **Frontage:** Ocean, Sandy Beach **Pool:** **Zoning:** 12 - A-2 Medium Density Apartme **Sale Conditions:** None **Schools:** [Waialua](#), [Waialua](#), [Waialua](#) \* [Request Showing](#), [Photos](#), [History](#), [Maps](#), [Deed](#), [Watch List](#), [Tax Info](#)

DOM = Days on Market, Occ. = Occupancy, FL = Floor Number