

418 halemaumau Street, Honolulu 96821 * \$2,300,000

Beds: **5**
Bath: **4/0**
Living Sq. Ft.: **3,849**
Land Sq. Ft.: **7,852**
Lanai Sq. Ft.: **180**
Sq. Ft. Other: **0**
Total Sq. Ft. **4,029**
Maint./Assoc. **\$0 / \$0**
Parking: **3 Car+**

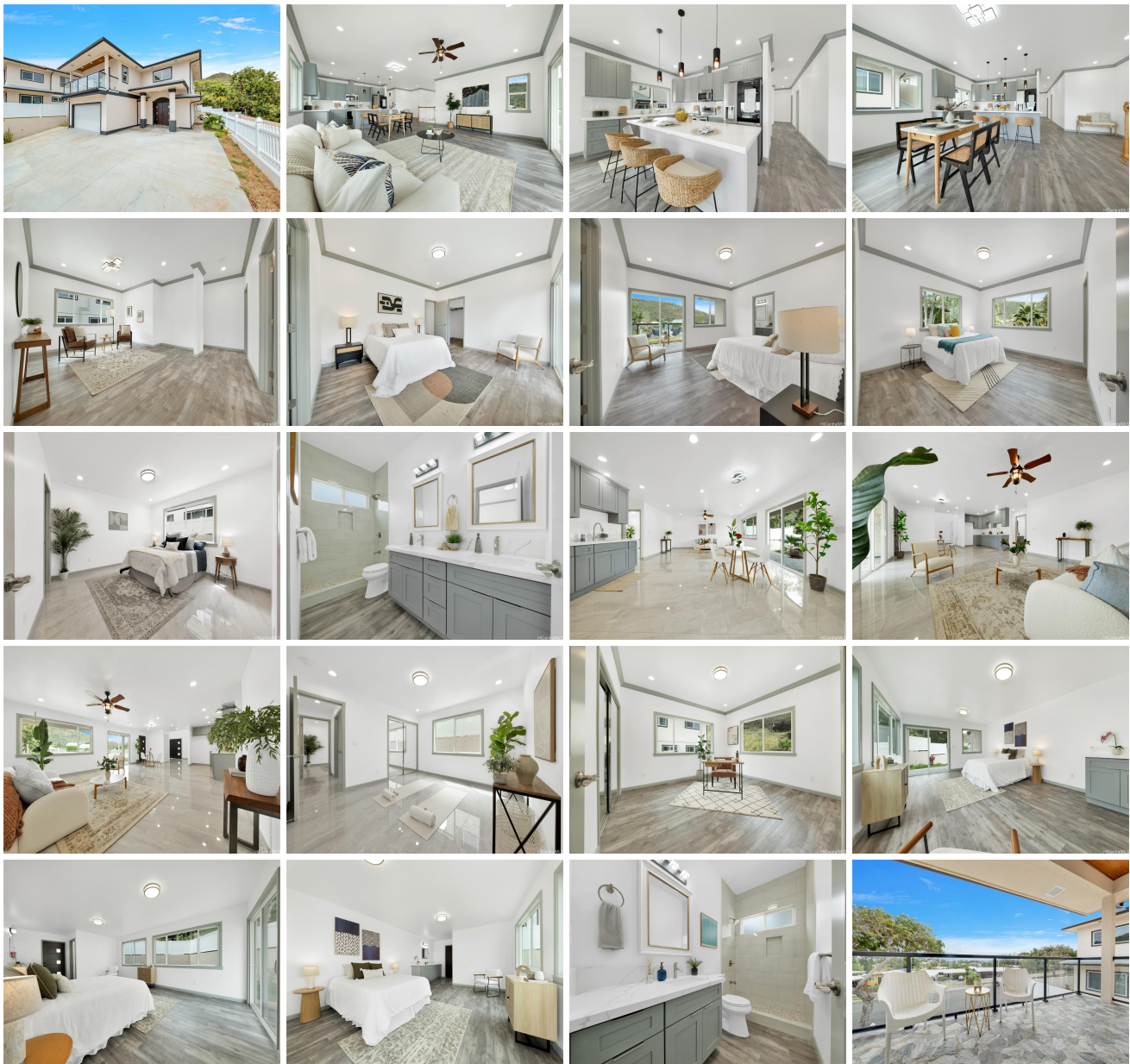
MLS#: **202406106, FS**
Status: **Active**
List Date & DOM: **03-11-2024 & 127**
Condition: **Excellent**
Frontage:
Tax/Year: **\$0/2024**
Neighborhood: **Niu Valley**
Flood Zone: **Zone D - Tool**
Frontage:

Year Built: **2023**
Remodeled:
Total Parking: **3**
Assessed Value
Building: **\$1,079,300**
Land: **\$1,289,600**
Total: **\$2,368,900**
Stories / CPR: **Two / Yes**

Zoning: **04 - R-7.5 Residential District**

View: **City, Mountain, Ocean**

Public Remarks: Brand new home with beautiful constructed 5 bedroom 4 bath ! This stucco finished home was designed with an open floor plan which allows for multi-generational living. There are balconies on the second floors for entertaining. Primary Bedroom come with double sink. Great location, in a highly desirable, proximity to beach, schools and shopping are all conveniently nearby. Truly a home with space and places for everyone! Don't miss your opportunity today ! Tax assessment not update yet. **Sale Conditions:** None **Schools:** , , * [Request Showing](#), [Photos](#), [History](#), [Maps](#), [Deed](#), [Watch List](#), [Tax Info](#)





Address	Price	Bd & Bth	Living / Avg.	Land Avg.	DOM
418 halemaumau Street	\$2,300,000	5 & 4/0	3,849 \$598	7,852 \$293	127

Address	Tax Maint. Ass.	Assessed Land	Assessed Building	Assessed Total	Ratio	Year & Remodeled
418 halemaumau Street	\$0 \$0 \$0	\$1,289,600	\$1,079,300	\$2,368,900	97%	2023 & NA

[418 halemaumau Street](#) - MLS#: [202406106](#) - Brand new home with beautiful constructed 5 bedroom 4 bath ! This stucco finished home was designed with an open floor plan which allows for multi-generational living. There are balconies on the second floors for entertaining. Primary Bedroom come with double sink. Great location, in a highly desirable, proximity to beach, schools and shopping are all conveniently nearby. Truly a home with space and places for everyone! Don't miss your opportunity today ! Tax assessment not update yet. **Region:** Diamond Head **Neighborhood:** Niu Valley **Condition:** Excellent **Parking:** 3 Car+ **Total Parking:** 3 **View:** City, Mountain, Ocean **Frontage:** **Pool:** None **Zoning:** 04 - R-7.5 Residential District **Sale Conditions:** None **Schools:** , , * [Request Showing](#), [Photos](#), [History](#), [Maps](#), [Deed](#), [Watch List](#), [Tax Info](#)

DOM = Days on Market