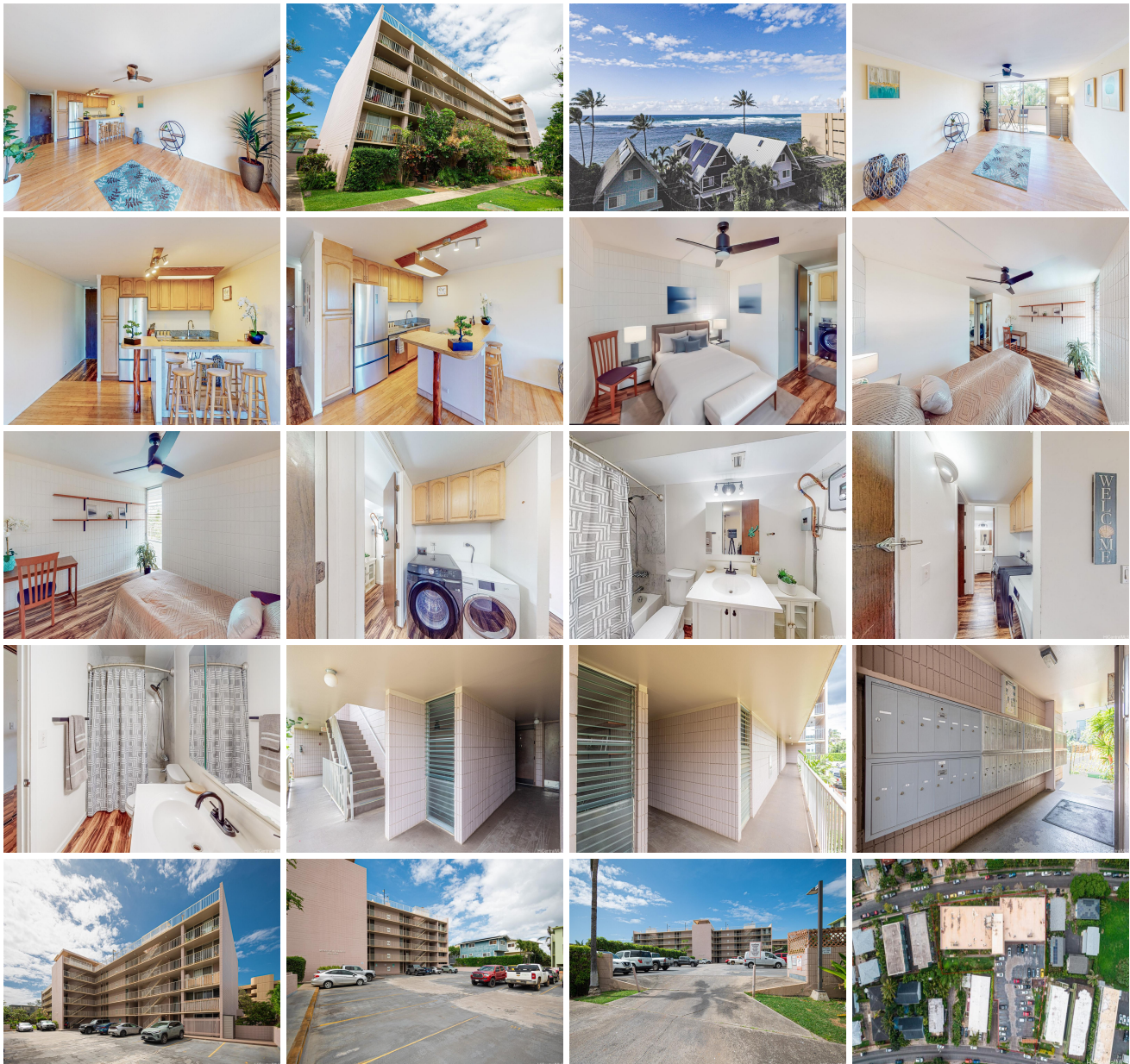


# **Mokuleia Sands 68-055 Akule Street Unit 212, Waialua 96791 \* Mokuleia Sands \* \$442,000**

**\* Originally \$448,000**

Beds: <b>1</b>	MLS#: <b>202406146, FS</b>	Year Built: <b>1976</b>
Bath: <b>1/0</b>	Status: <b>Active</b>	Remodeled: <b>2014</b>
Living Sq. Ft.: <b>640</b>	List Date & DOM: <b>04-22-2024 &amp; 86</b>	Total Parking: <b>1</b>
Land Sq. Ft.: <b>38,246</b>	Condition: <b>Average</b>	<a href="#">Assessed Value</a>
Lanai Sq. Ft.: <b>97</b>	Frontage: <b>Other</b>	Building: <b>\$328,400</b>
Sq. Ft. Other: <b>0</b>	Tax/Year: <b>\$52/2023</b>	Land: <b>\$49,000</b>
Total Sq. Ft. <b>737</b>	Neighborhood: <b>Waialua</b>	Total: <b>\$377,400</b>
Maint./Assoc. <b>\$677 / \$0</b>	<a href="#">Flood Zone</a> : <b>Zone VE - Tool</b>	Stories / CPR: <b>One / No</b>
Parking: <b>Assigned, Covered - 1</b>	Frontage: <b>Other</b>	
<a href="#">Zoning</a> : <b>12 - A-2 Medium Density Apartme</b>	View: <b>Ocean</b>	

**Public Remarks:** Immerse yourself in the tranquil beach lifestyle with this charming 1bedroom, 1bathroom condo located directly across the street from the beautiful shores of Waialua. Perfect for those seeking a cozy retreat or an investment opportunity, this condo offers convenient beach access and breathtaking ocean views, especially from the roof. Come inside to discover a well-designed space filled with jalousie windows for the perfect island breeze, creating a serene atmosphere throughout. The kitchen is equipped with everything you need to prepare classic island meals, while the living area provides a comfortable space to unwind after a relaxing day spent snorkeling and surfing at the beach. The bedroom offers a peaceful sanctuary, and updated bathroom features convenient amenities. With its prime location near local shops, dining, and outdoor activities, this condo presents an ideal opportunity to experience the laid-back charm of beach living. Don't miss out - schedule a showing today and make this your own island paradise! **Sale Conditions:** None **Schools:** , , \* [Request Showing](#), [Photos](#), [History](#), [Maps](#), [Deed](#), [Watch List](#), [Tax Info](#)





Matterport

Address	Price	Bd & Bth	Living / Avg.	Land   Avg.	Lanai	Occ.	FL	DOM
<a href="#">68-055 Akule Street 212</a>	<b>\$442,000</b>	1 & 1/0	640   \$691	38,246   \$12	97	43%	2	86

Address	Tax   Maint.   Ass.	Assessed Land	Assessed Building	Assessed Total	Ratio	Year & Remodeled
<a href="#">68-055 Akule Street 212</a>	\$52   \$677   \$0	\$49,000	\$328,400	\$377,400	117%	1976 & 2014

[68-055 Akule Street 212](#) - MLS#: [202406146](#) - Original price was \$448,000 - Immerse yourself in the tranquil beach lifestyle with this charming 1bedroom, 1bathroom condo located directly across the street from the beautiful shores of Waialua. Perfect for those seeking a cozy retreat or an investment opportunity, this condo offers convenient beach access and breathtaking ocean views, especially from the roof. Come inside to discover a well-designed space filled with jalousie windows for the perfect island breeze, creating a serene atmosphere throughout. The kitchen is equipped with everything you need to prepare classic island meals, while the living area provides a comfortable space to unwind after a relaxing day spent snorkeling and surfing at the beach. The bedroom offers a peaceful sanctuary, and updated bathroom features convenient amenities. With its prime location near local shops, dining, and outdoor activities, this condo presents an ideal opportunity to experience the laid-back charm of beach living. Don't miss out - schedule a showing today and make this your own island paradise! **Region:** North Shore **Neighborhood:** Waialua **Condition:** Average **Parking:** Assigned, Covered - 1 **Total Parking:** 1 **View:** Ocean **Frontage:** Other **Pool:** **Zoning:** 12 - A-2 Medium Density Apartme **Sale Conditions:** None **Schools:** , , \* [Request Showing](#), [Photos](#), [History](#), [Maps](#), [Deed](#), [Watch List](#), [Tax Info](#)

DOM = Days on Market, Occ. = Occupancy, FL = Floor Number