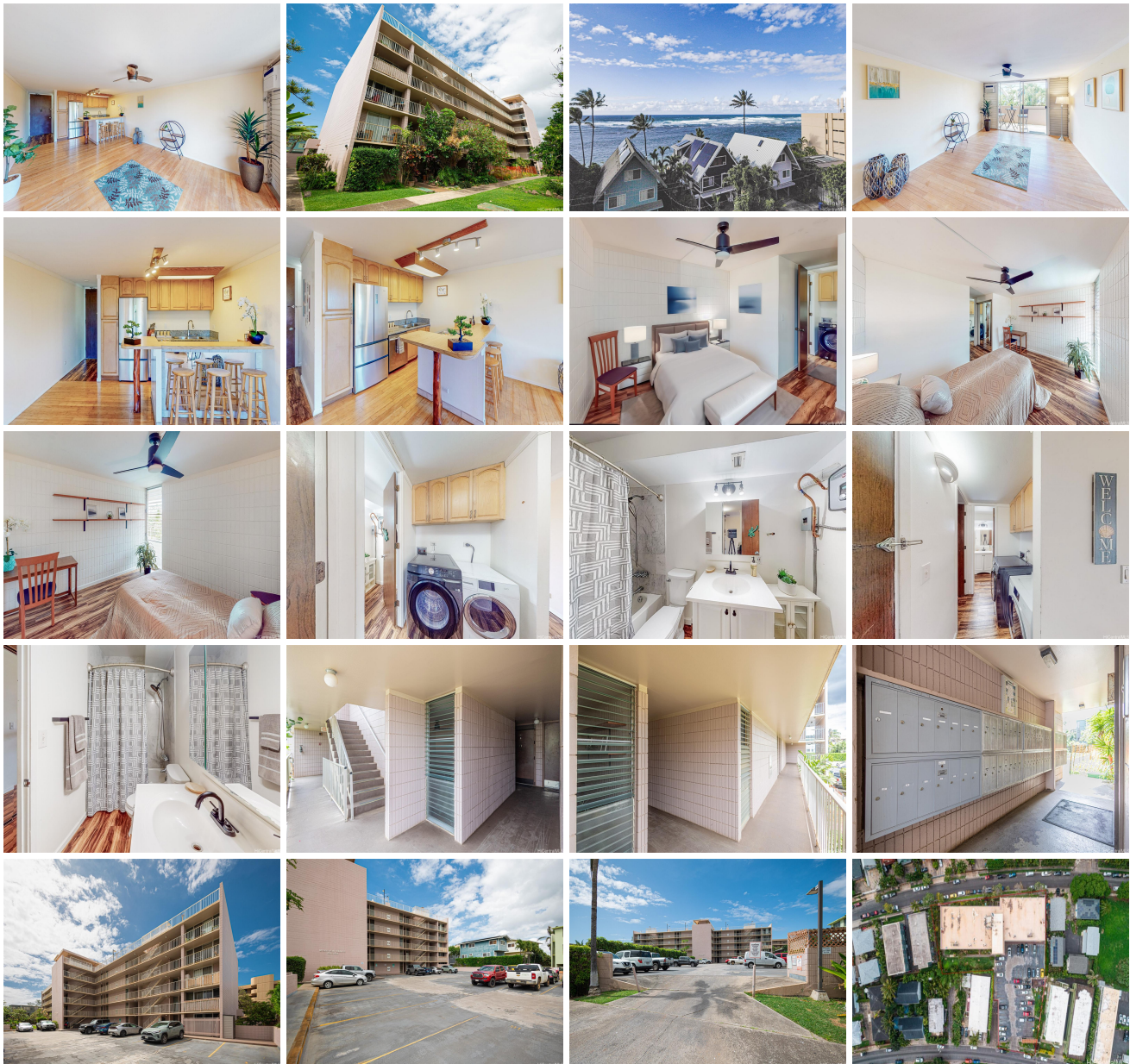


Mokuleia Sands 68-055 Akule Street Unit 212, Waialua 96791 * \$442,000 * Originally

\$448,000

Beds: 1	MLS#: 202406146, FS	Year Built: 1976
Bath: 1/0	Status: Active	Remodeled: 2014
Living Sq. Ft.: 640	List Date & DOM: 04-22-2024 & 86	Total Parking: 1
Land Sq. Ft.: 38,246	Condition: Average	Assessed Value
Lanai Sq. Ft.: 97	Frontage: Other	Building: \$328,400
Sq. Ft. Other: 0	Tax/Year: \$52/2023	Land: \$49,000
Total Sq. Ft. 737	Neighborhood: Waialua	Total: \$377,400
Maint./Assoc. \$677 / \$0	Flood Zone : Zone VE - Tool	Stories / CPR: One / No
Parking: Assigned, Covered - 1	Frontage: Other	
Zoning : 12 - A-2 Medium Density Apartme	View: Ocean	

Public Remarks: Immerse yourself in the tranquil beach lifestyle with this charming 1bedroom, 1bathroom condo located directly across the street from the beautiful shores of Waialua. Perfect for those seeking a cozy retreat or an investment opportunity, this condo offers convenient beach access and breathtaking ocean views, especially from the roof. Come inside to discover a well-designed space filled with jalousie windows for the perfect island breeze, creating a serene atmosphere throughout. The kitchen is equipped with everything you need to prepare classic island meals, while the living area provides a comfortable space to unwind after a relaxing day spent snorkeling and surfing at the beach. The bedroom offers a peaceful sanctuary, and updated bathroom features convenient amenities. With its prime location near local shops, dining, and outdoor activities, this condo presents an ideal opportunity to experience the laid-back charm of beach living. Don't miss out - schedule a showing today and make this your own island paradise! **Sale Conditions:** None **Schools:** , , * [Request Showing](#), [Photos](#), [History](#), [Maps](#), [Deed](#), [Watch List](#), [Tax Info](#)





Matterport

Address	Price	Bd & Bth	Living / Avg.	Land Avg.	DOM
68-055 Akule Street 212	\$442,000	1 & 1/0	640 \$691	38,246 \$12	86

Address	Tax Maint. Ass.	Assessed Land	Assessed Building	Assessed Total	Ratio	Year & Remodeled
68-055 Akule Street 212	\$52 \$677 \$0	\$49,000	\$328,400	\$377,400	117%	1976 & 2014

[68-055 Akule Street 212](#) - MLS#: [202406146](#) - Original price was \$448,000 - Immerse yourself in the tranquil beach lifestyle with this charming 1bedroom, 1bathroom condo located directly across the street from the beautiful shores of Waialua. Perfect for those seeking a cozy retreat or an investment opportunity, this condo offers convenient beach access and breathtaking ocean views, especially from the roof. Come inside to discover a well-designed space filled with jalousie windows for the perfect island breeze, creating a serene atmosphere throughout. The kitchen is equipped with everything you need to prepare classic island meals, while the living area provides a comfortable space to unwind after a relaxing day spent snorkeling and surfing at the beach. The bedroom offers a peaceful sanctuary, and updated bathroom features convenient amenities. With its prime location near local shops, dining, and outdoor activities, this condo presents an ideal opportunity to experience the laid-back charm of beach living. Don't miss out - schedule a showing today and make this your own island paradise! **Region:** North Shore **Neighborhood:** Waialua **Condition:** Average **Parking:** Assigned, Covered - 1 **Total Parking:** 1 **View:** Ocean **Frontage:** Other **Pool:** **Zoning:** 12 - A-2 Medium Density Apartme **Sale Conditions:** None **Schools:** , , * [Request Showing](#), [Photos](#), [History](#), [Maps](#), [Deed](#), [Watch List](#), [Tax Info](#)

DOM = Days on Market