

Uraku Tower Hawaii 1341 Kapiolani Boulevard Unit 12D, Honolulu 96814 * Uraku Tower

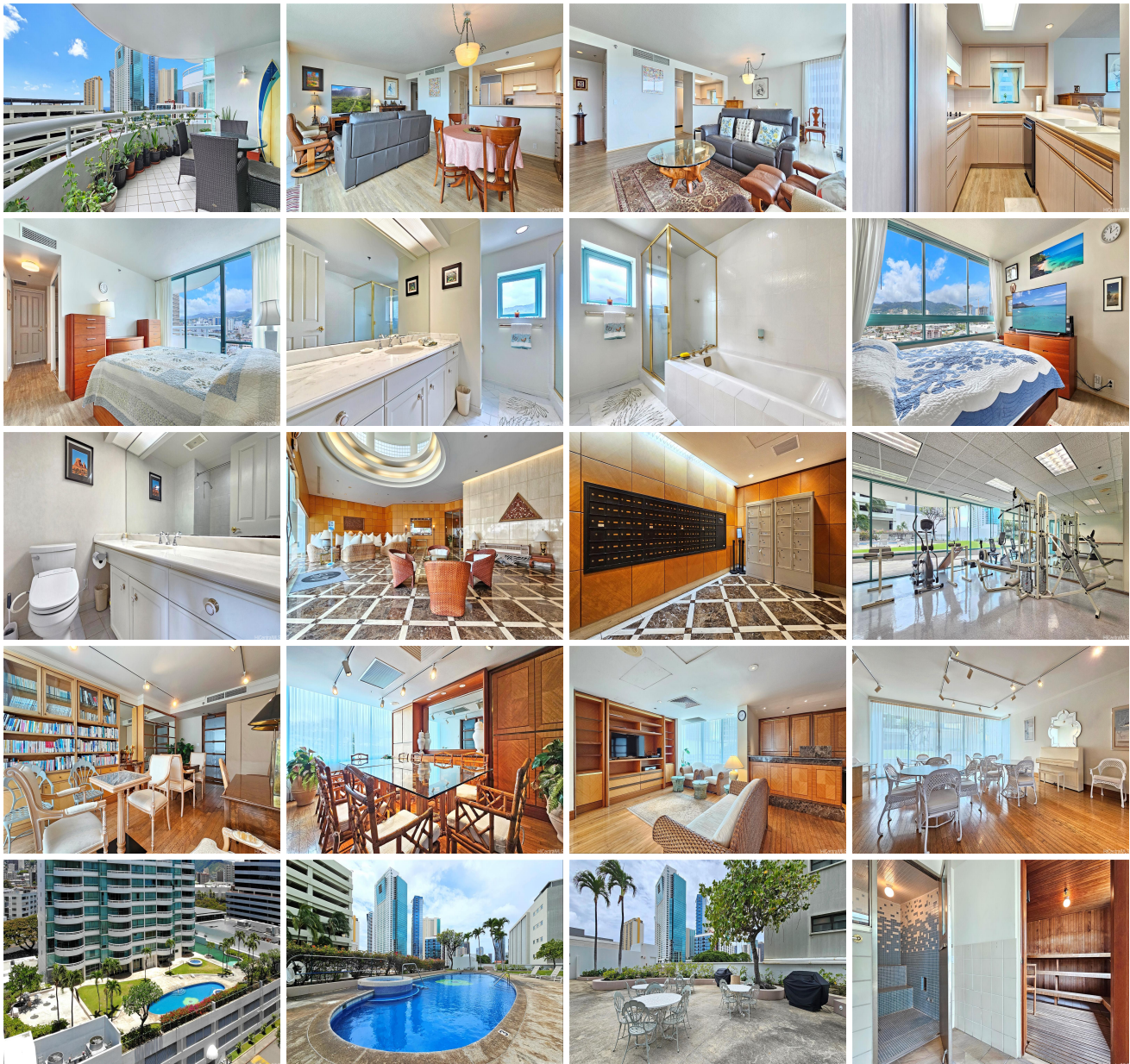
Hawaii * \$548,000 * Originally \$648,000

Beds: 2	MLS#: 202406170, FS	Year Built: 1989
Bath: 2/0	Status: Active	Remodeled:
Living Sq. Ft.: 1,185	List Date & DOM: 03-12-2024 & 127	Total Parking: 2
Land Sq. Ft.: 0	Condition: Excellent	Assessed Value
Lanai Sq. Ft.: 199	Frontage: Other	Building: \$375,000
Sq. Ft. Other: 0	Tax/Year: \$192/2024	Land: \$284,800
Total Sq. Ft. 1,384	Neighborhood: Ala Moana	Total: \$659,800
Maint./Assoc. \$2,422 / \$0	Flood Zone : Zone X - Tool	Stories / CPR: 21+ / No
Parking: Assigned, Covered - 2, Secured Entry	Frontage: Other	

Zoning: 33 - BMX-3 Community Business M

View: City, Mountain, Ocean

Public Remarks: This inviting corner unit, priced to sell, offers a serene escape in the heart of Honolulu. With 2 bedrooms, 2 bathrooms, 2 side by side parking stalls, and a generous 1,185 sqft, it's an ideal retreat. Step onto one of the two balconies and take in the breathtaking views of the majestic mountains and a glimpse of the ocean. Residents enjoy the convenience of weekly cleaning services and even have access to a limousine service. Located just a stone's throw away from the vibrant Ala Moana Center and the sun-kissed beach, this residence is perfectly situated. Amenities include: exercise room, pool, two jacuzzies, BBQ area, library, meeting room, party room, and wet and dry sauna. Embrace the ultimate resort lifestyle at Uraku Tower, where comfort, convenience, and leisure converge! **Sale Conditions:** None **Schools:** [Jefferson](#), [Washington](#), [Mckinley](#)
 * [Request Showing](#), [Photos](#), [History](#), [Maps](#), [Deed](#), [Watch List](#), [Tax Info](#)





Address	Price	Bd & Bth	Living / Avg.	Land Avg.	Lanai	Occ.	FL	DOM
1341 Kapiolani Boulevard 12D	\$548,000	2 & 2/0	1,185 \$462	0 \$inf	199	30%	12	127

Address	Tax Maint. Ass.	Assessed Land	Assessed Building	Assessed Total	Ratio	Year & Remodeled
1341 Kapiolani Boulevard 12D	\$192 \$2,422 \$0	\$284,800	\$375,000	\$659,800	83%	1989 & NA

[1341 Kapiolani Boulevard 12D](#) - MLS#: [202406170](#) - Original price was \$648,000 - This inviting corner unit, priced to sell, offers a serene escape in the heart of Honolulu. With 2 bedrooms, 2 bathrooms, 2 side by side parking stalls, and a generous 1,185 sqft, it's an ideal retreat. Step onto one of the two balconies and take in the breathtaking views of the majestic mountains and a glimpse of the ocean. Residents enjoy the convenience of weekly cleaning services and even have access to a limousine service. Located just a stone's throw away from the vibrant Ala Moana Center and the sun-kissed beach, this residence is perfectly situated. Amenities include: exercise room, pool, two jacuzzies, BBQ area, library, meeting room, party room, and wet and dry sauna. Embrace the ultimate resort lifestyle at Uraku Tower, where comfort, convenience, and leisure converge! **Region:** Metro **Neighborhood:** Ala Moana **Condition:** Excellent **Parking:** Assigned, Covered - 2, Secured Entry **Total Parking:** 2 **View:** City, Mountain, Ocean **Frontage:** Other **Pool:** Zoning: 33 - BMX-3 Community Business M **Sale Conditions:** None **Schools:** [Jefferson](#), [Washington](#), [Mckinley](#) * [Request Showing](#), [Photos](#), [History](#), [Maps](#), [Deed](#), [Watch List](#), [Tax Info](#)

DOM = Days on Market, Occ. = Occupancy, FL = Floor Number