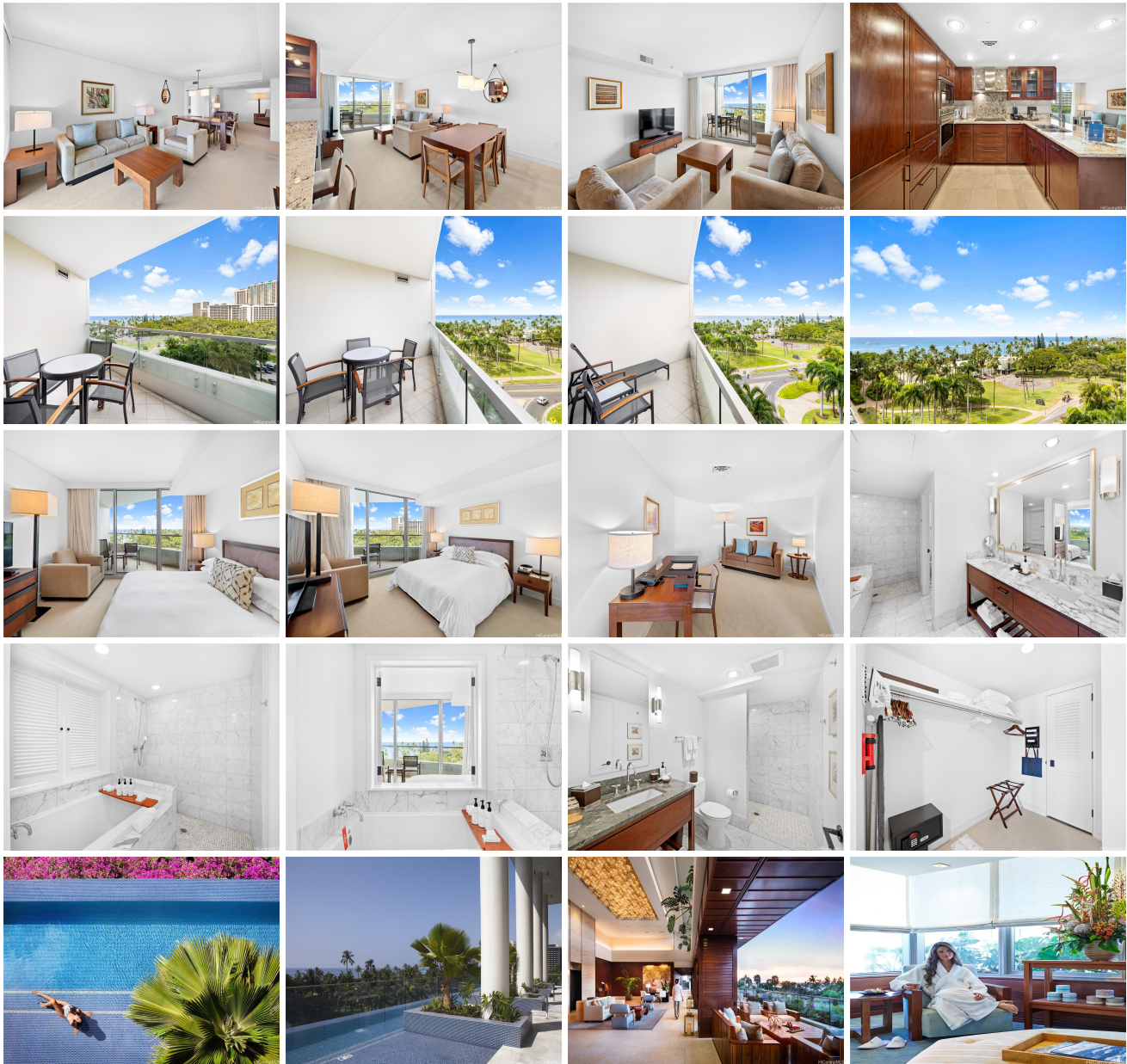


Trump Tower Waikiki 223 Saratoga Road Unit 915, Honolulu 96815 * \$1,430,000

Beds: 1	MLS#: 202406214, FS	Year Built: 2009
Bath: 2/0	Status: Active	Remodeled:
Living Sq. Ft.: 1,138	List Date & DOM: 03-11-2024 & 108	Total Parking: 0
Land Sq. Ft.: 0	Condition: Excellent	Assessed Value
Lanai Sq. Ft.: 154	Frontage:	Building: \$1,005,200
Sq. Ft. Other: 0	Tax/Year: \$1,923/2023	Land: \$632,300
Total Sq. Ft. 1,292	Neighborhood: Waikiki	Total: \$1,637,500
Maint./Assoc. \$2,061 / \$0	Flood Zone : Zone AE - Tool	Stories / CPR: 21+ / No
Parking: Other	Frontage:	
Zoning : X6 - Resort Mixed Use Precinct	View: City, Ocean, Sunset	

Public Remarks: Enjoy luxury living at Ka La'i Waikiki Beach, LXR Hotels & Resorts Hotel/Condo! (former Trump International Hotel Waikiki) This 1 bedroom comes fully furnished and has desirable ocean views. Top notch amenities include infinity pool, concierge, valet parking, and a full service spa. Included in purchase are upscale appliances, granite counter tops, and travertine tile flooring. **Sale Conditions:** None **Schools:** , , * [Request Showing](#), [Photos](#), [History](#), [Maps](#), [Deed](#), [Watch List](#), [Tax Info](#)





Address	Price	Bd & Bth	Living / Avg.	Land Avg.	DOM
223 Saratoga Road 915	\$1,430,000	1 & 2/0	1,138 \$1,257	0 \$inf	108

Address	Tax Maint. Ass.	Assessed Land	Assessed Building	Assessed Total	Ratio	Year & Remodeled
223 Saratoga Road 915	\$1,923 \$2,061 \$0	\$632,300	\$1,005,200	\$1,637,500	87%	2009 & NA

[223 Saratoga Road 915](#) - MLS#: [202406214](#) - Enjoy luxury living at Ka La'i Waikiki Beach, LXR Hotels & Resorts Hotel/Condo! (former Trump International Hotel Waikiki) This 1 bedroom comes fully furnished and has desirable ocean views. Top notch amenities include infinity pool, concierge, valet parking, and a full service spa. Included in purchase are upscale appliances, granite counter tops, and travertine tile flooring. **Region:** Metro **Neighborhood:** Waikiki **Condition:** Excellent **Parking:** Other **Total Parking:** 0 **View:** City, Ocean, Sunset **Frontage:** **Pool:** **Zoning:** X6 - Resort Mixed Use Precinct **Sale Conditions:** None **Schools:** , , * [Request Showing](#), [Photos](#), [History](#), [Maps](#), [Deed](#), [Watch List](#), [Tax Info](#)

DOM = Days on Market