

**Banyan Tree Plaza 1212 Punahou Street Unit 2307, Honolulu 96826 \* Banyan Tree Plaza \***

**\$688,000**

Beds: **3**  
Bath: **2/1**  
Living Sq. Ft.: **1,420**  
Land Sq. Ft.: **0**  
Lanai Sq. Ft.: **78**  
Sq. Ft. Other: **0**  
Total Sq. Ft. **1,498**  
Maint./Assoc. **\$1,537 / \$0**

MLS#: **202406317, FS**  
Status: **Active**  
List Date & DOM: **06-21-2024 & 8**  
Condition: **Above Average**  
Frontage:  
Tax/Year: **\$161/2024**  
Neighborhood: **Punahou**  
**Flood Zone: Zone X - Tool**

Year Built: **1974**  
Remodeled:  
Total Parking: **2**  
[Assessed Value](#)  
Building: **\$546,200**  
Land: **\$102,500**  
Total: **\$648,700**  
Stories / CPR: / **No**

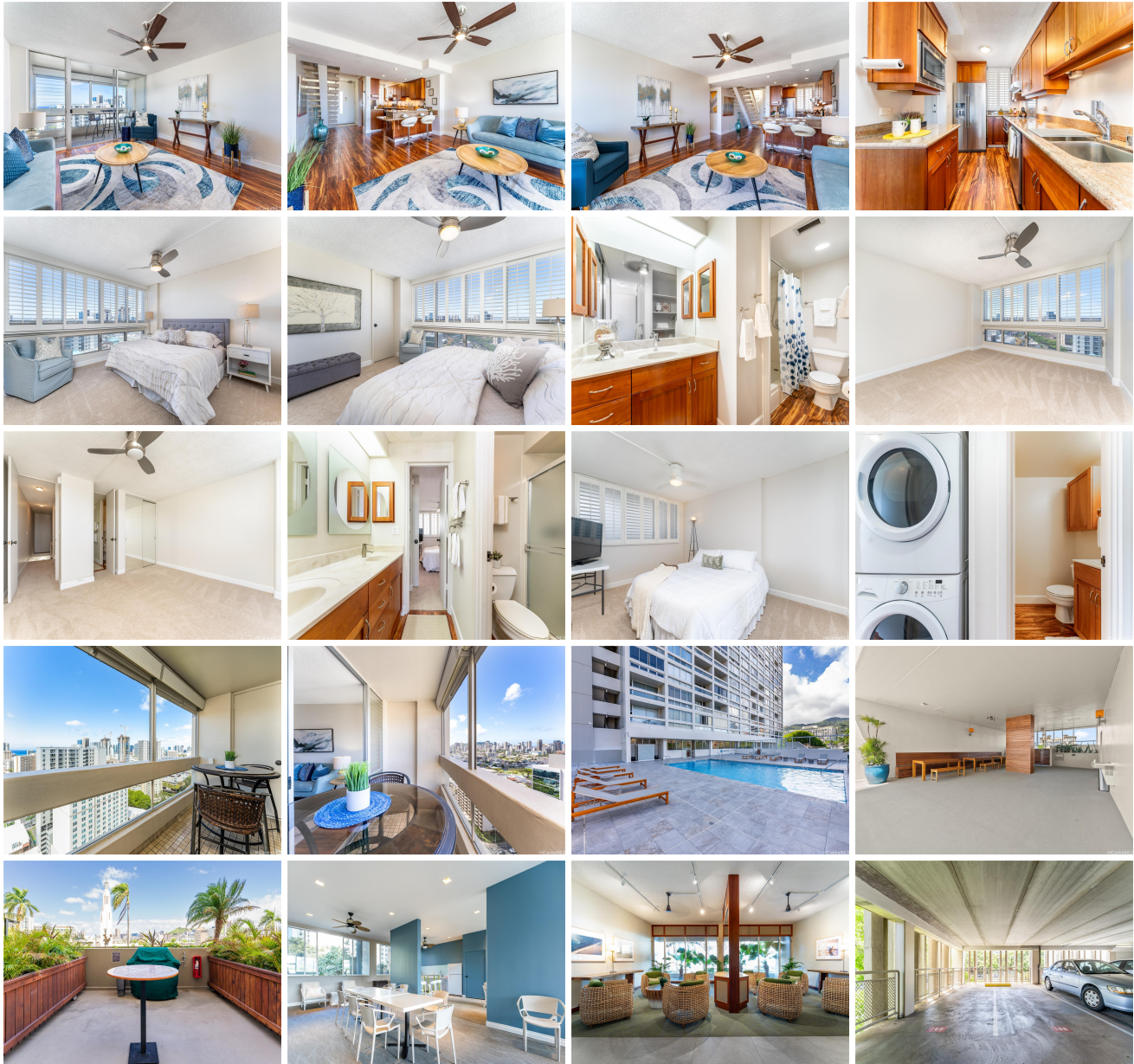
Parking: **Assigned, Covered - 2, Garage, Guest, Secured Entry**

Frontage:

**Zoning: 13 - A-3 High Density Apartment**

View: **City, Diamond Head, Mountain, Ocean**

**Public Remarks:** NEW LISTING!! Enjoy amazing Diamond Head, city, ocean and mountain views from this tastefully upgraded and immaculately maintained 3 bdrm/2.5 bath with 2 covered pkg in highly desirable Banyan Tree Plaza in the heart of Honolulu. With over 1,400 sq. ft. of interior living space, this unit features new carpet and vinyl flooring, a nice open floor plan, and updated bathrooms and kitchen with granite countertops and stainless-steel appliances. Soak in the spectacular view from your covered lanai as you relax and enjoy the cool breezes. Centrally located near parks, beaches, Ward Village and Ala Moana Shopping Center with an abundance of shopping, restaurants and entertainment...don't miss this fantastic opportunity! **Sale Conditions:** None **Schools:** [Kaahumanu](#), [Washington](#), [Mckinley](#) \* [Request Showing](#), [Photos](#), [History](#), [Maps](#), [Deed](#), [Watch List](#), [Tax Info](#)





Address	Price	Bd & Bth	Living / Avg.	Land   Avg.	Lanai	Occ.	FL	DOM
<a href="#">1212 Punahou Street 2307</a>	\$688,000	3 & 2/1	1,420   \$485	0   \$inf	78	58%	22	8

Address	Tax   Maint.   Ass.	Assessed Land	Assessed Building	Assessed Total	Ratio	Year & Remodeled
<a href="#">1212 Punahou Street 2307</a>	\$161   \$1,537   \$0	\$102,500	\$546,200	\$648,700	106%	1974 & NA

[1212 Punahou Street 2307](#) - MLS#: [202406317](#) - NEW LISTING!! Enjoy amazing Diamond Head, city, ocean and mountain views from this tastefully upgraded and immaculately maintained 3 bdrm/2.5 bath with 2 covered pkg in highly desirable Banyan Tree Plaza in the heart of Honolulu. With over 1,400 sq. ft. of interior living space, this unit features new carpet and vinyl flooring, a nice open floor plan, and updated bathrooms and kitchen with granite countertops and stainless-steel appliances. Soak in the spectacular view from your covered lanai as you relax and enjoy the cool breezes. Centrally located near parks, beaches, Ward Village and Ala Moana Shopping Center with an abundance of shopping, restaurants and entertainment...don't miss this fantastic opportunity! **Region:** Metro **Neighborhood:** Punahou **Condition:** Above Average **Parking:** Assigned, Covered - 2, Garage, Guest, Secured Entry **Total Parking:** 2 **View:** City, Diamond Head, Mountain, Ocean **Frontage:** **Pool:** **Zoning:** 13 - A-3 High Density Apartment **Sale Conditions:** None **Schools:** [Kaahumanu](#), [Washington](#), [Mckinley](#) \* [Request Showing](#), [Photos](#), [History](#), [Maps](#), [Deed](#), [Watch List](#), [Tax Info](#)

DOM = Days on Market, Occ. = Occupancy, FL = Floor Number