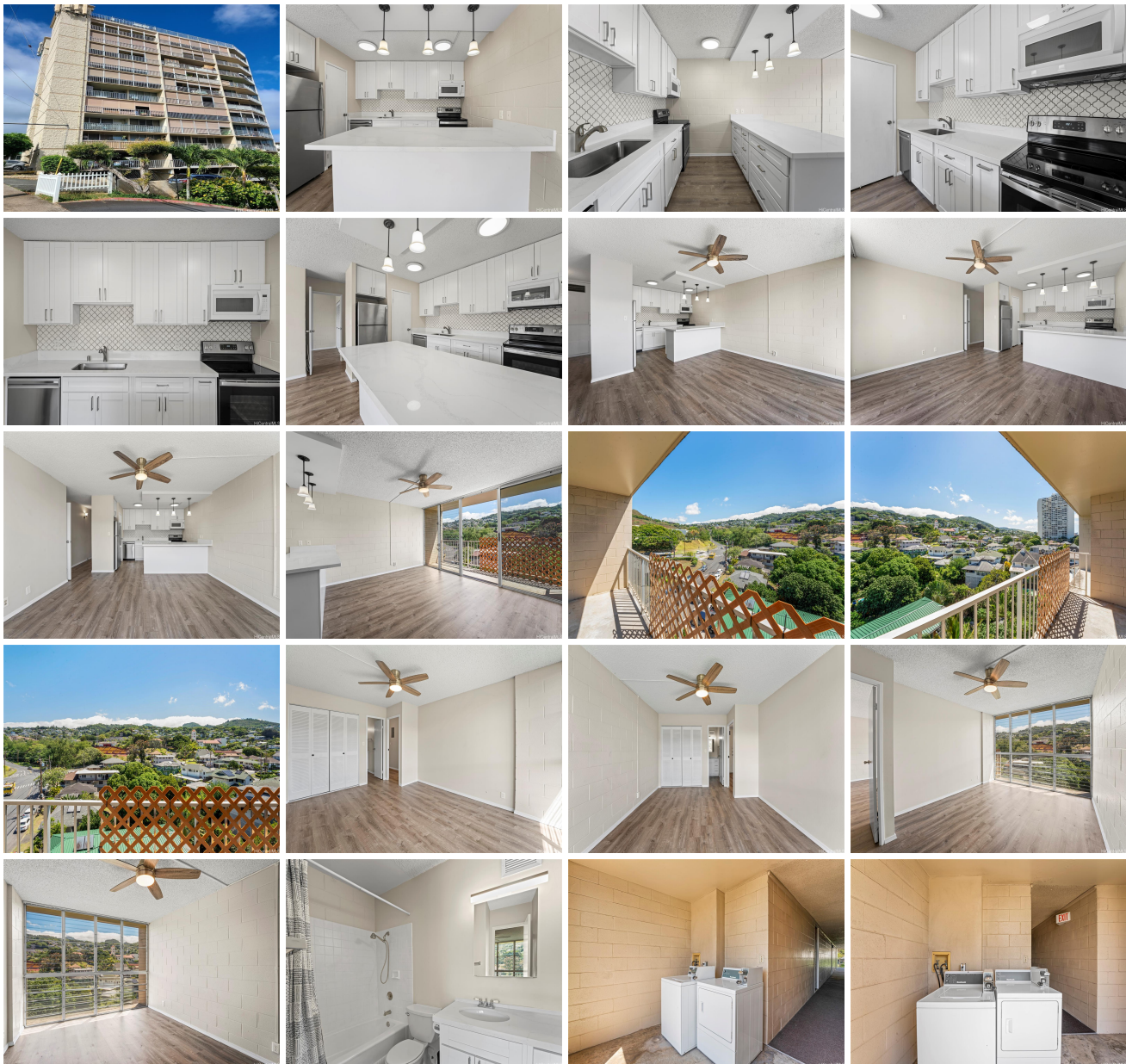


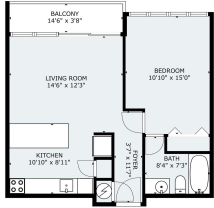
**Rose Terrace 1687 Pensacola Street Unit 902, Honolulu 96822 \* Rose Terrace \* \$315,000 \***

**Originally \$330,000**

Beds: <b>1</b> Bath: <b>1/0</b> Living Sq. Ft.: <b>563</b> Land Sq. Ft.: <b>14,680</b> Lanai Sq. Ft.: <b>55</b> Sq. Ft. Other: <b>0</b> Total Sq. Ft. <b>618</b> Maint./Assoc. <b>\$772 / \$0</b> Parking: <b>Assigned, Covered - 1</b> Zoning: <b>12 - A-2 Medium Density Apartme</b>	MLS#: <b>202406354, FS</b> Status: <b>Active</b> List Date & DOM: <b>03-13-2024 &amp; 109</b> Condition: <b>Excellent</b> Frontage: Tax/Year: <b>\$95/2023</b> Neighborhood: <b>Makiki</b> Flood Zone: <b>Zone X - Tool</b>	Year Built: <b>1975</b> Remodeled: <b>2022</b> Total Parking: <b>1</b> <a href="#">Assessed Value</a> Building: <b>\$266,900</b> Land: <b>\$57,900</b> Total: <b>\$324,800</b> Stories / CPR: <b>8-14 / No</b> Frontage: View: <b>Mountain</b>
---	--	---

**Public Remarks:** Approved Shortsale. 1 Bedroom | 1 bath completely remodeled home with 180-degree views of Makiki Valley Mountains. The home has been beautifully remodeled in 2022 with Quartz Countertops and LVP flooring. The kitchen features a breakfast bar, dishwasher, and a quant pantry. No need for A/C, the breeze alone cools the whole home instantly. You can step outside on the lanai and enjoy the mountain views. Both the living room and bedroom have floor-to-ceiling windows that brighten the home. This unit is perfect for investors or first-time home buyers. Only a few minutes from Ala Moana Mall, Punchbowl, University of Hawaii, and a short distance to Pearl Harbor, Hickam, Camp Smith, and Kaneohe Bay. Come stop by, take a look, and fall in love **Sale Conditions:** Short Sale **Schools:** , , \* [Request Showing](#), [Photos](#), [History](#), [Maps](#), [Deed](#), [Watch List](#), [Tax Info](#)





Address	Price	Bd & Bth	Living / Avg.	Land   Avg.	Lanai	Occ.	FL	DOM
<a href="#">1687 Pensacola Street 902</a>	<b>\$315,000</b>	1 & 1/0	563   \$560	14,680   \$21	55	52%	9	109

Address	Tax   Maint.   Ass.	Assessed Land	Assessed Building	Assessed Total	Ratio	Year & Remodeled
<a href="#">1687 Pensacola Street 902</a>	\$95   \$772   \$0	\$57,900	\$266,900	\$324,800	97%	1975 & 2022

[1687 Pensacola Street 902](#) - MLS#: [202406354](#) - Original price was \$330,000 - Approved Shortsale. 1 Bedroom | 1 bath completely remodeled home with 180-degree views of Makiki Valley Mountains. The home has been beautifully remodeled in 2022 with Quartz Countertops and LVP flooring. The kitchen features a breakfast bar, dishwasher, and a quant pantry. No need for A/C, the breeze alone cools the whole home instantly. You can step outside on the lanai and enjoy the mountain views. Both the living room and bedroom have floor-to-ceiling windows that brighten the home. This unit is perfect for investors or first-time home buyers. Only a few minutes from Ala Moana Mall, Punchbowl, University of Hawaii, and a short distance to Pearl Harbor, Hickam, Camp Smith, and Kaneohe Bay. Come stop by, take a look, and fall in love **Region:** Metro **Neighborhood:** Makiki **Condition:** Excellent **Parking:** Assigned, Covered - 1 **Total Parking:** 1 **View:** Mountain **Frontage:** **Pool:** **Zoning:** 12 - A-2 Medium Density Apartme **Sale Conditions:** Short Sale **Schools:** , , \* [Request Showing](#), [Photos](#), [History](#), [Maps](#), [Deed](#), [Watch List](#), [Tax Info](#)

DOM = Days on Market, Occ. = Occupancy, FL = Floor Number