

The Watermark 1551 Ala Wai Boulevard Unit 704, Honolulu 96815 * The Watermark *

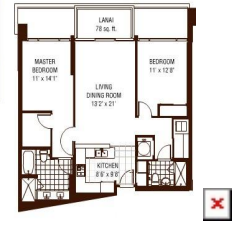
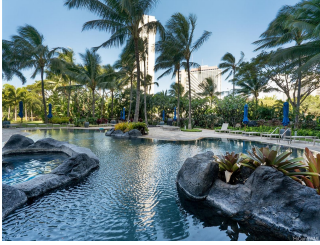
\$1,045,000 * Originally \$1,088,000

Beds: 2	MLS#: 202406387, FS	Year Built: 2008
Bath: 2/0	Status: Active Under Contract	Remodeled: 2014
Living Sq. Ft.: 1,112	List Date & DOM: 03-15-2024 & 107	Total Parking: 2
Land Sq. Ft.: 0	Condition: Above Average	Assessed Value
Lanai Sq. Ft.: 76	Frontage:	Building: \$962,800
Sq. Ft. Other: 0	Tax/Year: \$507/2023	Land: \$220,200
Total Sq. Ft. 1,188	Neighborhood: Waikiki	Total: \$1,183,000
Maint./Assoc. \$1,623 / \$0	Flood Zone : Zone AE - Tool	Stories / CPR: One / No
Parking: Assigned, Covered - 2, Garage, Secured Entry	Frontage:	
Zoning : X2 - Apartment Precinct	View: City, Garden, Marina/Canal, Mountain, Ocean, Sunset	

Public Remarks: Welcome to the Watermark Waikiki, a resort-like luxury condo perfectly situated between the quiet part of Waikiki and Ala Moana. Rewind as soon as you step into the elegant open-space lobby. The sight of lush tropical gardens and swaying palms surrounding the salt water-heated infinity pool & hot tub will brighten you up. Enjoy coming home to #704. Its excellent condition and well-designed space give you a sense of place, capturing the green tropical landscape, Ala Wai Canal, Yacht Harbor, Ala Moana Beach Park, some ocean and the Ala Moana & city skyline views from every room. Features include Brazilian granite countertops, African brushed Mahogany cabinets and Viking appliances in the kitchen, engineered hardwood floors and floor-to-ceiling glass windows in all rooms, automatic window shades, a walk-in closet, Central AC, and an open and private lanai. The unit comes with two parking stalls and storage. Amenities also include the Gym with a garden view, Sauna, BBQ Pavilion, 5-BBQ areas, Library/Media Room, 24-hour Security, and Concierge Front Desk. **Sale Conditions:** None

Schools: , , * [Request Showing](#), [Photos](#), [History](#), [Maps](#), [Deed](#), [Watch List](#), [Tax Info](#)





Address	Price	Bd & Bth	Living / Avg.	Land Avg.	Lanai	Occ.	FL	DOM
1551 Ala Wai Boulevard 704	\$1,045,000	2 & 2/0	1,112 \$940	0 \$inf	76	60%	7	107

Address	Tax Maint. Ass.	Assessed Land	Assessed Building	Assessed Total	Ratio	Year & Remodeled
1551 Ala Wai Boulevard 704	\$507 \$1,623 \$0	\$220,200	\$962,800	\$1,183,000	88%	2008 & 2014

[1551 Ala Wai Boulevard 704](#) - MLS#: [202406387](#) - Original price was \$1,088,000 - Welcome to the Watermark Waikiki, a resort-like luxury condo perfectly situated between the quiet part of Waikiki and Ala Moana. Rewind as soon as you step into the elegant open-space lobby. The sight of lush tropical gardens and swaying palms surrounding the salt water-heated infinity pool & hot tub will brighten you up. Enjoy coming home to #704. Its excellent condition and well-designed space give you a sense of place, capturing the green tropical landscape, Ala Wai Canal, Yacht Harbor, Ala Moana Beach Park, some ocean and the Ala Moana & city skyline views from every room. Features include Brazilian granite countertops, African brushed Mahogany cabinets and Viking appliances in the kitchen, engineered hardwood floors and floor-to-ceiling glass windows in all rooms, automatic window shades, a walk-in closet, Central AC, and an open and private lanai. The unit comes with two parking stalls and storage. Amenities also include the Gym with a garden view, Sauna, BBQ Pavilion, 5-BBQ areas, Library/Media Room, 24-hour Security, and Concierge Front Desk. **Region:** Metro **Neighborhood:** Waikiki **Condition:** Above Average **Parking:** Assigned, Covered - 2, Garage, Secured Entry **Total Parking:** 2 **View:** City, Garden, Marina/Canal, Mountain, Ocean, Sunset **Frontage:** **Pool:** **Zoning:** X2 - Apartment Precinct **Sale Conditions:** None **Schools:** , , * [Request Showing](#), [Photos](#), [History](#), [Maps](#), [Deed](#), [Watch List](#), [Tax Info](#)

DOM = Days on Market, Occ. = Occupancy, FL = Floor Number