

Makiki Towers 1617 Keeaumoku Street Unit 403, Honolulu 96822 * Makiki Towers *

\$499,000 * Originally \$525,000

Beds: **2**
Bath: **1/1**
Living Sq. Ft.: **773**
Land Sq. Ft.: **48,827**
Lanai Sq. Ft.: **72**
Sq. Ft. Other: **0**
Total Sq. Ft. **845**
Maint./Assoc. **\$769 / \$0**

MLS#: **202406426, FS**
Status: **Active**
List Date & DOM: **04-07-2024 & 101**
Condition: **Excellent**
Frontage:
Tax/Year: **\$99/2024**
Neighborhood: **Makiki Area**
Flood Zone: Zone X - Tool

Year Built: **1965**
Remodeled:
Total Parking: **1**
[Assessed Value](#)
Building: **\$394,100**
Land: **\$63,900**
Total: **\$458,000**
Stories / CPR: / **No**

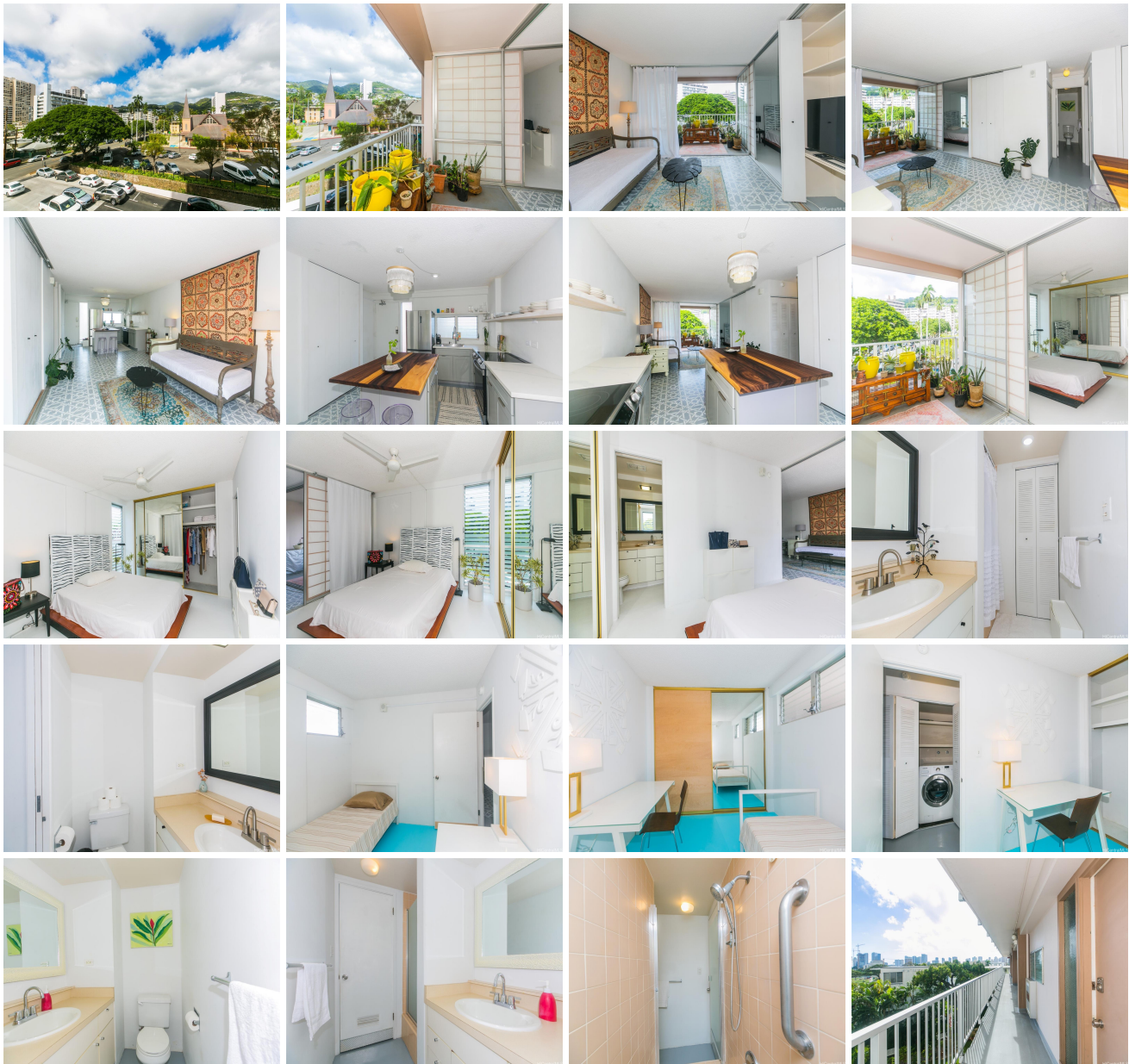
Parking: **Assigned, Open - 1**

Zoning: 12 - A-2 Medium Density Apartme

Frontage:

View: **City, Mountain**

Public Remarks: Live the Honolulu dream at this Maikiki Towers oasis! This cool, breezy condo offers a fantastic layout with a spacious open lanai, ideal for indoor-outdoor living. Inside, beautifully painted concrete floors complement the new modern kitchen, making it move-in ready. Location is unbeatable: with easy access to freeways, bus lines, shops, and restaurants, you'll have everything Honolulu offers at your fingertips. First-time homebuyer or savvy investor, this condo ticks all the boxes. The unit comes fully furnished. Make it yours! **Sale Conditions:** None **Schools:** [Lincoln](#), [Stevenson](#), [Roosevelt](#) * [Request Showing](#), [Photos](#), [History](#), [Maps](#), [Deed](#), [Watch List](#), [Tax Info](#)





Address	Price	Bd & Bth	Living / Avg.	Land Avg.	Lanai	Occ.	FL	DOM
1617 Keeaumoku Street 403	\$499,000	2 & 1/1	773 \$646	48,827 \$10	72	51%	4	101

Address	Tax Maint. Ass.	Assessed Land	Assessed Building	Assessed Total	Ratio	Year & Remodeled
1617 Keeaumoku Street 403	\$99 \$769 \$0	\$63,900	\$394,100	\$458,000	109%	1965 & NA

[1617 Keeaumoku Street 403](#) - MLS#: [202406426](#) - Original price was \$525,000 - Live the Honolulu dream at this Maikiki Towers oasis! This cool, breezy condo offers a fantastic layout with a spacious open lanai, ideal for indoor-outdoor living. Inside, beautifully painted concrete floors complement the new modern kitchen, making it move-in ready. Location is unbeatable: with easy access to freeways, bus lines, shops, and restaurants, you'll have everything Honolulu offers at your fingertips. First-time homebuyer or savvy investor, this condo ticks all the boxes. The unit comes fully furnished. Make it yours! **Region:** Metro **Neighborhood:** Makiki Area **Condition:** Excellent **Parking:** Assigned, Open - 1 **Total Parking:** 1 **View:** City, Mountain **Frontage:** **Pool:** **Zoning:** 12 - A-2 Medium Density Apartme **Sale Conditions:** None **Schools:** [Lincoln](#), [Stevenson](#), [Roosevelt](#) * [Request Showing](#), [Photos](#), [History](#), [Maps](#), [Deed](#), [Watch List](#), [Tax Info](#)

DOM = Days on Market, Occ. = Occupancy, FL = Floor Number