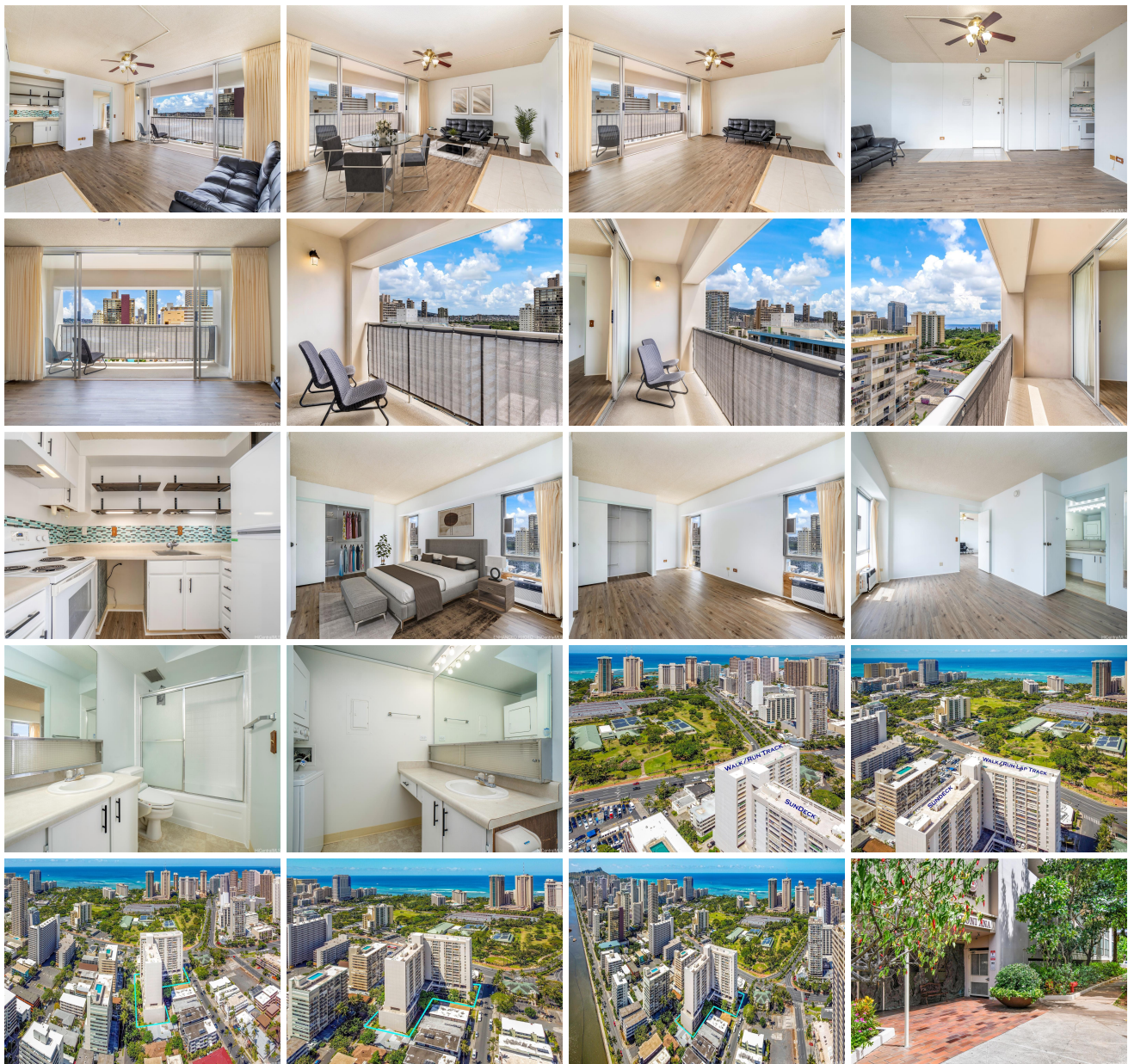


Keoni Ana 430 Keoniana Street Unit 1011, Honolulu 96815 * Keoni Ana * \$415,000

Beds: 1	MLS#: 202406479, FS	Year Built: 1977
Bath: 1/0	Status: Active	Remodeled:
Living Sq. Ft.: 643	List Date & DOM: 03-21-2024 & 117	Total Parking: 1
Land Sq. Ft.: 32,496	Condition: Average	Assessed Value
Lanai Sq. Ft.: 95	Frontage: Other	Building: \$351,000
Sq. Ft. Other: 0	Tax/Year: \$60/2023	Land: \$54,400
Total Sq. Ft. 738	Neighborhood: Waikiki	Total: \$405,400
Maint./Assoc. \$931 / \$0	Flood Zone : Zone AO - Tool	Stories / CPR: 15-20 / No
Parking: Assigned, Covered - 1, Guest, Street	Frontage: Other	
Zoning : X2 - Apartment Precinct	View: City, Golf Course, Marina/Canal	

Public Remarks: One of the best values in Waikiki. Rarely available 1 bedroom, 1 bathroom and 1 covered parking stall unit in the Keoni Ana. Relax in this well maintained unit featuring gorgeous mountain and Ala Wai canal views. Unit features new luxury vinyl plank flooring plus a washer and dryer in the unit. Large and open lanai perfect for a relaxing morning coffee or an after dinner cocktail. Prime location just minutes from the world famous Waikiki Beach, the Zoo, shopping, restaurants, Kapahulu Ave, and so much more. Live the Hawaii lifestyle from your permanent vacation home. Must see to appreciate! One or more photos have been enhanced. **Sale Conditions:** None **Schools:** , , * [Request Showing](#), [Photos](#), [History](#), [Maps](#), [Deed](#), [Watch List](#), [Tax Info](#)





Address	Price	Bd & Bth	Living / Avg.	Land Avg.	Lanai	Occ.	FL	DOM
430 Keoniana Street 1011	\$415,000	1 & 1/0	643 \$645	32,496 \$13	95	55%	14	117

Address	Tax Maint. Ass.	Assessed Land	Assessed Building	Assessed Total	Ratio	Year & Remodeled
430 Keoniana Street 1011	\$60 \$931 \$0	\$54,400	\$351,000	\$405,400	102%	1977 & NA

[430 Keoniana Street 1011](#) - MLS#: [202406479](#) - One of the best values in Waikiki. Rarely available 1 bedroom, 1 bathroom and 1 covered parking stall unit in the Keoni Ana. Relax in this well maintained unit featuring gorgeous mountain and Ala Wai canal views. Unit features new luxury vinyl plank flooring plus a washer and dryer in the unit. Large and open lanai perfect for a relaxing morning coffee or an after dinner cocktail. Prime location just minutes from the world famous Waikiki Beach, the Zoo, shopping, restaurants, Kapahulu Ave, and so much more. Live the Hawaii lifestyle from your permanent vacation home. Must see to appreciate! One or more photos have been enhanced. **Region:** Metro **Neighborhood:** Waikiki **Condition:** Average **Parking:** Assigned, Covered - 1, Guest, Street **Total Parking:** 1 **View:** City, Golf Course, Marina/Canal **Frontage:** Other **Pool:** **Zoning:** X2 - Apartment Precinct **Sale Conditions:** None **Schools:** , , * [Request Showing](#), [Photos](#), [History](#), [Maps](#), [Deed](#), [Watch List](#), [Tax Info](#)

DOM = Days on Market, Occ. = Occupancy, FL = Floor Number