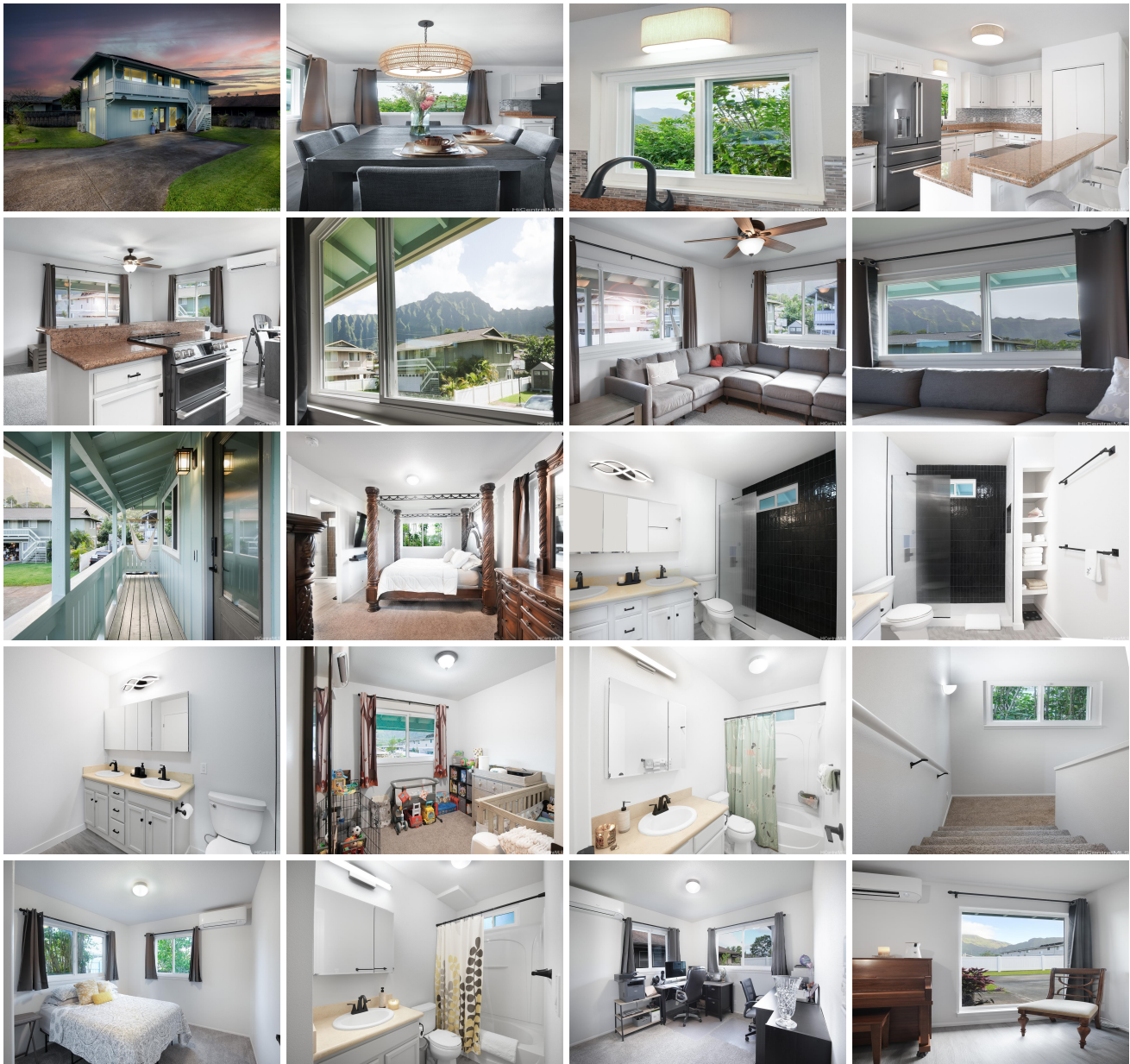


45.531 Halekou Road Unit B, Kaneohe 96744 * * \$1,699,000

| | | |
|---|---|---------------------------------|
| Beds: 4 | MLS#: 202406529, FS | Year Built: 2004 |
| Bath: 3/0 | Status: Active | Remodeled: 2024 |
| Living Sq. Ft.: 2,238 | List Date & DOM: 03-16-2024 & 104 | Total Parking: 3 |
| Land Sq. Ft.: 6,929 | Condition: Excellent | Assessed Value |
| Lanai Sq. Ft.: 105 | Frontage: Other | Building: \$411,700 |
| Sq. Ft. Other: 0 | Tax/Year: \$331/2023 | Land: \$822,300 |
| Total Sq. Ft. 2,343 | Neighborhood: Hale Kou | Total: \$1,234,000 |
| Maint./Assoc. \$0 / \$0 | Flood Zone : Zone X - Tool | Stories / CPR: Two / Yes |
| Parking: 3 Car+, Driveway | Frontage: Other | |
| Zoning : 05 - R-5 Residential District | View: Mountain | |

Public Remarks: +++ April HECO bill \$41/mo, 32 PHOTOVOLTAIC PANELS owned outright on NET METERING with 2 Tesla back up batteries +++ 7 split system A/C, Double pane windows, Fiberglass front doors with obscure privacy glass +++ 2 Story 4 bedrooms, 3 bathrooms, 2/2 up and 2/1 down with living areas, GYM & Porch +++ Painted inside and out, Spectacular Koolau Mountain Views, Garage turned 582 sqft Gym, Nice lawn, low maintenance yard ++ Rattan light fixtures, outlets, switches, Hand glazed Spanish tiled primary bathroom, Natural Stone Counter Tops, Vinyl Plank, W2W Carpeting +++ Hollow tile, Vinyl fencing, Close to H-3 freeway, Kaneohe, Kailua towns and Kaneohe Marine Base. +++ Seller Credit for New Refrigerator, Range/Oven & dishwasher. **Sale Conditions:** None **Schools:** [Parker](#), [King](#), [Castle](#) * [Request Showing](#), [Photos](#), [History](#), [Maps](#), [Deed](#), [Watch List](#), [Tax Info](#)





| Address | Price | Bd & Bth | Living / Avg. | Land Avg. | Lanai | Occ. | FL | DOM |
|---------------------------------------|-----------------------------|----------|---------------|---------------|-------|------|----|-----|
| 45.531 Halekou Road B | \$1,699,000 | 4 & 3/0 | 2,238 \$759 | 6,929 \$245 | 105 | 0% | 0 | 104 |

| Address | Tax Maint. Ass. | Assessed Land | Assessed Building | Assessed Total | Ratio | Year & Remodeled |
|---------------------------------------|---------------------|---------------|-------------------|----------------|-------|------------------|
| 45.531 Halekou Road B | \$331 \$0 \$0 | \$822,300 | \$411,700 | \$1,234,000 | 138% | 2004 & 2024 |

[45.531 Halekou Road B](#) - MLS#: [202406529](#) - +++ April HECO bill \$41/mo, 32 PHOTOVOLTAIC PANELS owned outright on NET METERING with 2 Tesla back up batteries +++ 7 split system A/C, Double pane windows, Fiberglass front doors with obscure privacy glass +++ 2 Story 4 bedrooms, 3 bathrooms, 2/2 up and 2/1 down with living areas, GYM & Porch +++ Painted inside and out, Spectacular Koolau Mountain Views, Garage turned 582 sqft Gym, Nice lawn, low maintenance yard ++ Rattan light fixtures, outlets, switches, Hand glazed Spanish tiled primary bathroom, Natural Stone Counter Tops, Vinyl Plank, W2W Carpeting +++ Hollow tile, Vinyl fencing, Close to H-3 freeway, Kaneohe, Kailua towns and Kaneohe Marine Base. +++ Seller Credit for New Refrigerator, Range/Oven & dishwasher. **Region:** Kaneohe **Neighborhood:** Hale Kou **Condition:** Excellent **Parking:** 3 Car+, Driveway **Total Parking:** 3 **View:** Mountain **Frontage:** Other **Pool:** None **Zoning:** 05 - R-5 Residential District **Sale Conditions:** None **Schools:** [Parker](#), [King](#), [Castle](#) * [Request Showing](#), [Photos](#), [History](#), [Maps](#), [Deed](#), [Watch List](#), [Tax Info](#)

DOM = Days on Market, Occ. = Occupancy, FL = Floor Number