

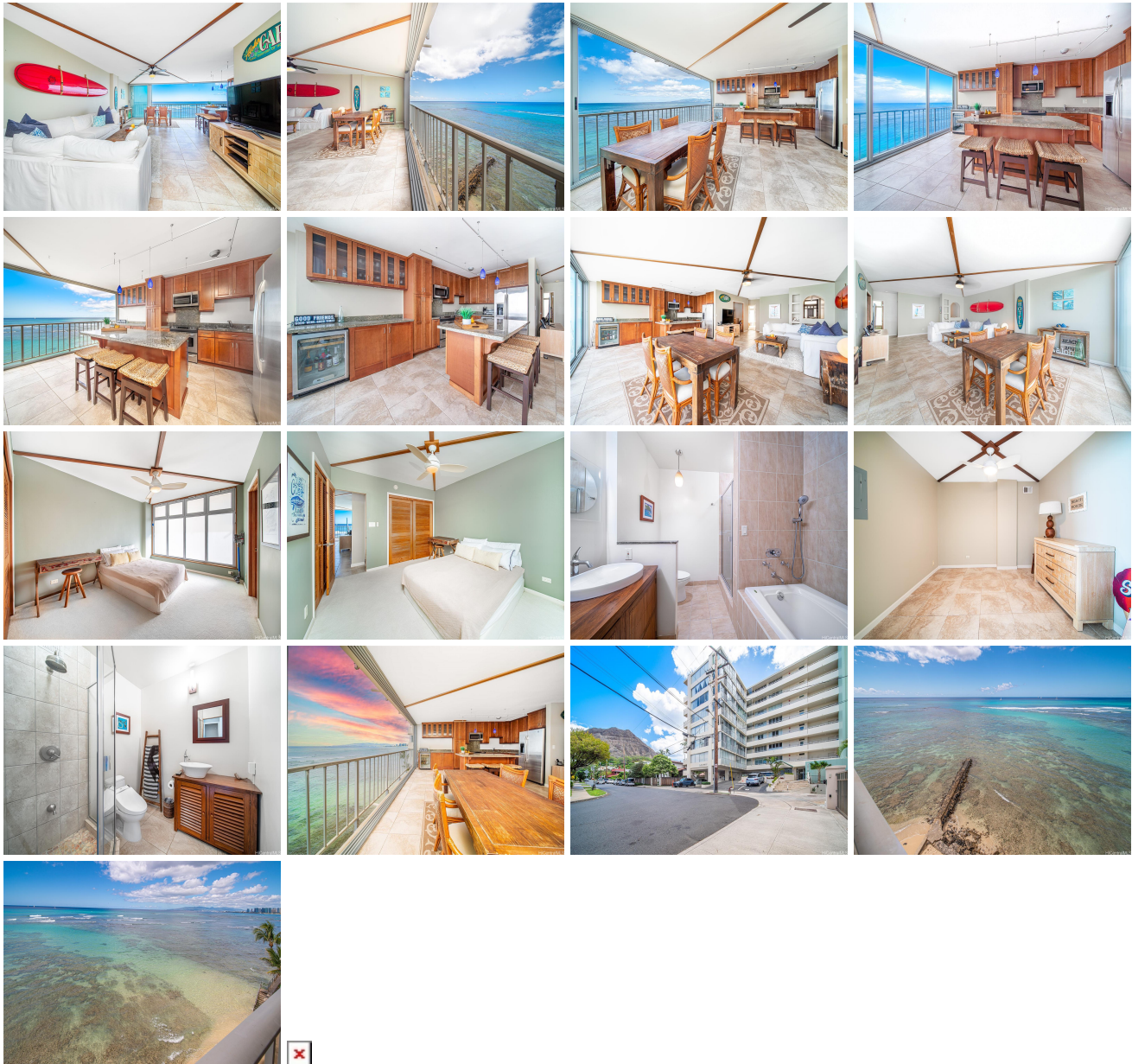
**Kainalu 2801 Coconut Avenue Unit 4B, Honolulu 96815 \* \$2,040,000 \* Originally \$2,270,000**

Beds: <b>2</b>	MLS#: <b>202406551, FS</b>	Year Built: <b>1958</b>
Bath: <b>2/0</b>	Status: <b>Active</b>	Remodeled:
Living Sq. Ft.: <b>1,162</b>	List Date & DOM: <b>03-18-2024 &amp; 120</b>	Total Parking: <b>1</b>
Land Sq. Ft.: <b>0</b>	Condition: <b>Excellent, Above Average</b>	<a href="#">Assessed Value</a>
Lanai Sq. Ft.: <b>0</b>	Frontage: <b>Ocean</b>	Building: <b>\$1,458,600</b>
Sq. Ft. Other: <b>0</b>	Tax/Year: <b>\$470/2023</b>	Land: <b>\$152,900</b>
Total Sq. Ft. <b>1,162</b>	Neighborhood: <b>Diamond Head</b>	Total: <b>\$1,611,500</b>
Maint./Assoc. <b>\$1,885 / \$0</b>	<a href="#">Flood Zone</a> : <b>Zone X - Tool</b>	Stories / CPR: <b>8-14 / No</b>
Parking: <b>Assigned, Covered - 1, Secured Entry</b>	Frontage: <b>Ocean</b>	

**Zoning: 12 - A-2 Medium Density Apartme**

**View: City, Coastline, Ocean, Sunset**

**Public Remarks:** Situated on the private end of Waikiki, just below Diamond Head, this 2 bedroom, 2 bathroom, 1 parking unit at Kainalu features stunning ocean views. Relax and entertain in your spacious living room. Washer/dryer in unit. Secured parking stall. This Co-op unit awaits your personal touches. Near Diamond Head lookout, Kapiolani Park, and world famous Waikiki Beach. Swim, surf, and enjoy the sandy beaches right in front of your building. This is the Gold Coast lifestyle of Oahu. Come enjoy luxurious living! **Sale Conditions:** None **Schools:** , , \* [Request Showing](#), [Photos](#), [History](#), [Maps](#), [Deed](#), [Watch List](#), [Tax Info](#)



Address	Price	Bd & Bth	Living / Avg.	Land   Avg.	DOM
<a href="#">2801 Coconut Avenue 4B</a>	<b>\$2,040,000</b>	2 & 2/0	1,162   \$1,756	0   \$inf	120

Address	Tax   Maint.   Ass.	Assessed Land	Assessed Building	Assessed Total	Ratio	Year & Remodeled
<a href="#">2801 Coconut Avenue 4B</a>	\$470   \$1,885   \$0	\$152,900	\$1,458,600	\$1,611,500	127%	1958 & NA

[2801 Coconut Avenue 4B](#) - MLS#: [202406551](#) - Original price was \$2,270,000 - Situated on the private end of Waikiki, just below Diamond Head, this 2 bedroom, 2 bathroom, 1 parking unit at Kainalu features stunning ocean views. Relax and entertain in your spacious living room. Washer/dryer in unit. Secured parking stall. This Co-op unit awaits your personal touches. Near Diamond Head lookout, Kapiolani Park, and world famous Waikiki Beach. Swim, surf, and enjoy the sandy beaches right in front of your building. This is the Gold Coast lifestyle of Oahu. Come enjoy luxurious living! **Region:** Diamond Head **Neighborhood:** Diamond Head **Condition:** Excellent, Above Average **Parking:** Assigned, Covered - 1, Secured Entry **Total Parking:** 1 **View:** City, Coastline, Ocean, Sunset **Frontage:** Ocean **Pool:** **Zoning:** 12 - A-2 Medium Density Apartme **Sale Conditions:** None **Schools:** , , \* [Request Showing](#), [Photos](#), [History](#), [Maps](#), [Deed](#), [Watch List](#), [Tax Info](#)

DOM = Days on Market