

Makaha Beach Cabanas 84-965 Farrington Highway Unit B912A, Waianae 96792 * Makaha

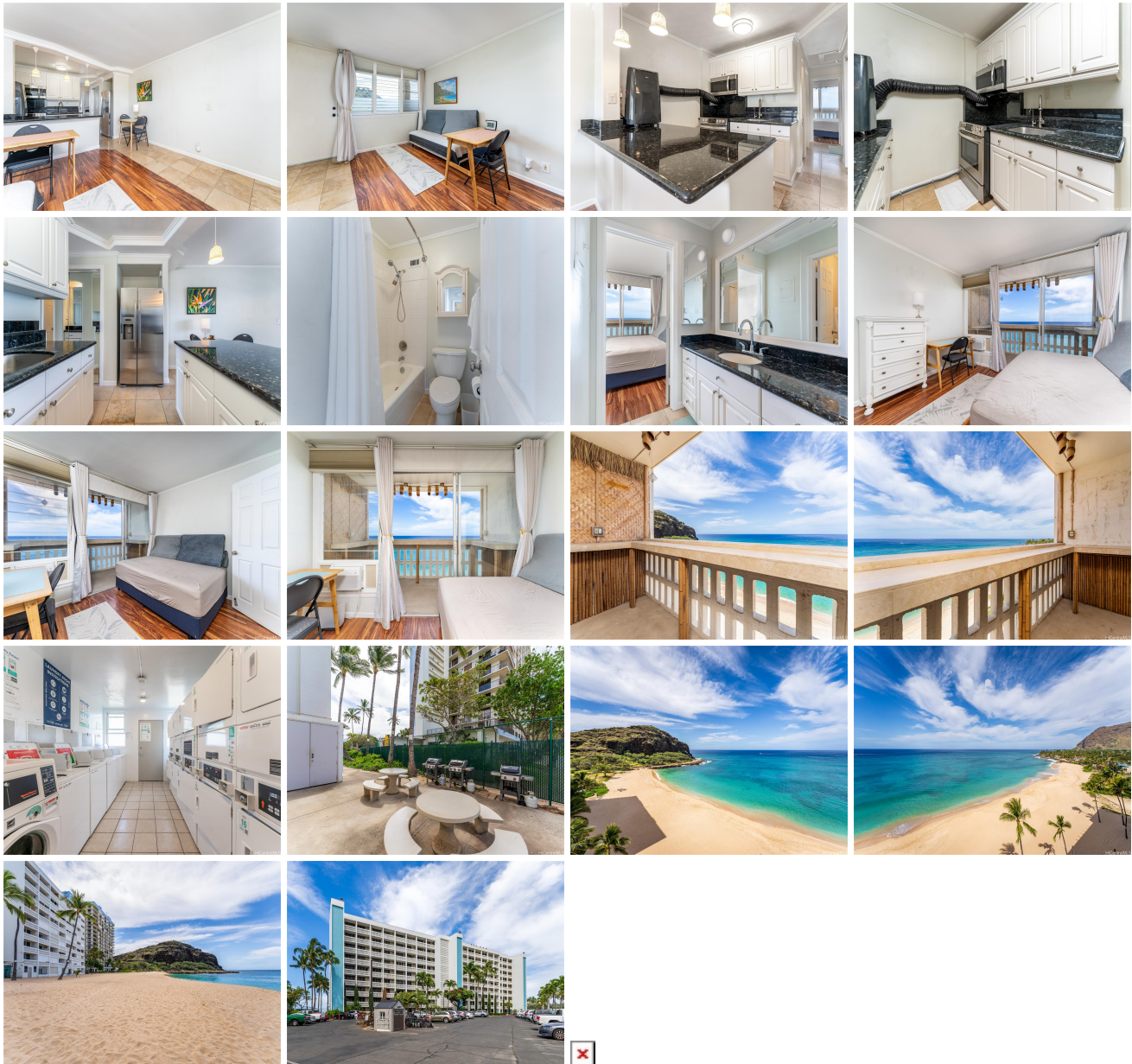
Beach Cabanas * \$375,000

Beds: 1	MLS#: 202406606, FS	Year Built: 1967
Bath: 1/0	Status: Active	Remodeled: 2005
Living Sq. Ft.: 456	List Date & DOM: 04-05-2024 & 99	Total Parking: 1
Land Sq. Ft.: 97,749	Condition: Above Average	Assessed Value
Lanai Sq. Ft.: 64	Frontage: Ocean, Sandy Beach	Building: \$312,500
Sq. Ft. Other: 0	Tax/Year: \$63/2024	Land: \$7,700
Total Sq. Ft. 520	Neighborhood: Makaha	Total: \$320,200
Maint./Assoc. \$993 / \$0	Flood Zone : Zone AE,Zo - Tool	Stories / CPR: / No
Parking: Guest, Open - 1, Secured Entry, Unassigned	Frontage: Ocean, Sandy Beach	

Zoning: 12 - A-2 Medium Density Apartme

View: Coastline, Mountain, Ocean, Sunset

Public Remarks: Stunning unobstructed ocean and mountain views await you from this HIGH FLOOR 1 bdrm/1 bath/1 pkg unit in Makaha Beach Cabanas. Nestled on the Waianae Coast, this oceanfront unit features travertine floors, granite countertops and an energy saving tankless water heater. Relax on your private lanai as you take in the breathtaking views with the white sandy beach and the tranquil Blue Pacific right in your backyard. Located near restaurants, parks and beaches. Don't miss this fantastic opportunity! **Sale Conditions:** None **Schools:** [Kamaile](#), [Waianae](#), [Waianae](#) * [Request Showing](#), [Photos](#), [History](#), [Maps](#), [Deed](#), [Watch List](#), [Tax Info](#)



Address	Price	Bd & Bth	Living / Avg.	Land Avg.	Lanai	Occ.	FL	DOM
84-965 Farrington Highway B912A	\$375,000	1 & 1/0	456 \$822	97,749 \$4	64	17%	9	99

Address	Tax Maint. Ass.	Assessed Land	Assessed Building	Assessed Total	Ratio	Year & Remodeled
84-965 Farrington Highway B912A	\$63 \$993 \$0	\$7,700	\$312,500	\$320,200	117%	1967 & 2005

[84-965 Farrington Highway B912A](#) - MLS#: [202406606](#) - Stunning unobstructed ocean and mountain views await you from this HIGH FLOOR 1 bdrm/1 bath/1 pkg unit in Makaha Beach Cabanas. Nestled on the Waianae Coast, this oceanfront unit features travertine floors, granite countertops and an energy saving tankless water heater. Relax on your private lanai as you take in the breathtaking views with the white sandy beach and the tranquil Blue Pacific right in your backyard. Located near restaurants, parks and beaches. Don't miss this fantastic opportunity! **Region:** Leeward **Neighborhood:** Makaha **Condition:** Above Average **Parking:** Guest, Open - 1, Secured Entry, Unassigned **Total Parking:** 1 **View:** Coastline, Mountain, Ocean, Sunset **Frontage:** Ocean,Sandy Beach **Pool:** **Zoning:** 12 - A-2 Medium Density Apartme **Sale Conditions:** None **Schools:** [Kamaile](#), [Waianae](#), [Waianae](#) * [Request Showing](#), [Photos](#), [History](#), [Maps](#), [Deed](#), [Watch List](#), [Tax Info](#)

DOM = Days on Market, Occ. = Occupancy, FL = Floor Number