

**Makaha Beach Cabanas 84-965 Farrington Highway Unit B912A, Waianae 96792 \***

**\$375,000**

Beds: **1**  
Bath: **1/0**  
Living Sq. Ft.: **456**  
Land Sq. Ft.: **97,749**  
Lanai Sq. Ft.: **64**  
Sq. Ft. Other: **0**  
Total Sq. Ft. **520**  
Maint./Assoc. **\$993 / \$0**

MLS#: **202406606, FS**  
Status: **Active**  
List Date & DOM: **04-05-2024 & 103**  
Condition: **Above Average**  
Frontage: **Ocean, Sandy Beach**  
Tax/Year: **\$63/2024**  
Neighborhood: **Makaha**  
**Flood Zone: Zone AE,Zo - Tool**

Year Built: **1967**  
Remodeled: **2005**  
Total Parking: **1**  
**Assessed Value**  
Building: **\$312,500**  
Land: **\$7,700**  
Total: **\$320,200**  
Stories / CPR: / **No**

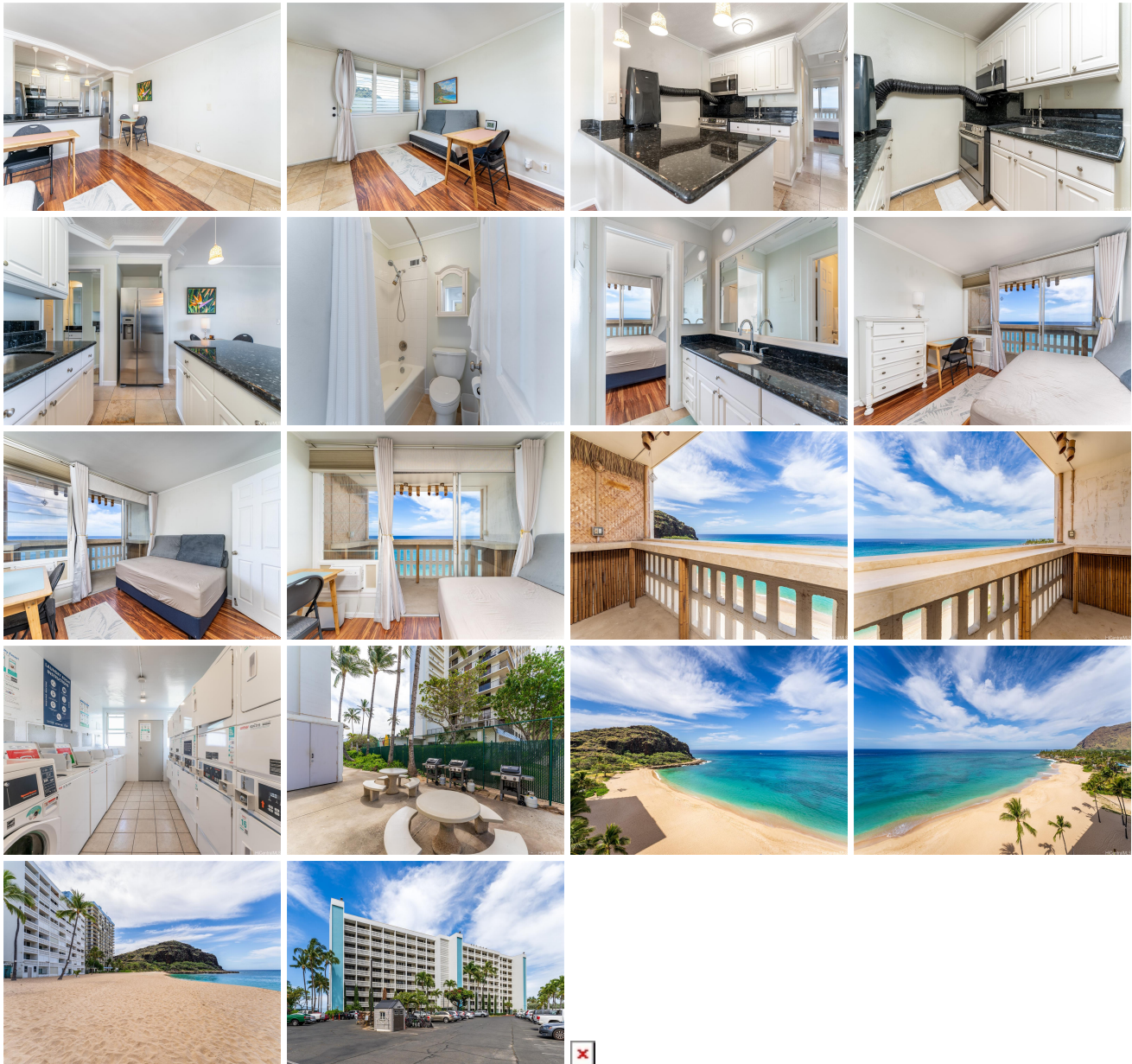
Parking: **Guest, Open - 1, Secured Entry, Unassigned**

Frontage: **Ocean, Sandy Beach**

**Zoning: 12 - A-2 Medium Density Apartme**

**View: Coastline, Mountain, Ocean, Sunset**

**Public Remarks:** Stunning unobstructed ocean and mountain views await you from this HIGH FLOOR 1 bdrm/1 bath/1 pkg unit in Makaha Beach Cabanas. Nestled on the Waianae Coast, this oceanfront unit features travertine floors, granite countertops and an energy saving tankless water heater. Relax on your private lanai as you take in the breathtaking views with the white sandy beach and the tranquil Blue Pacific right in your backyard. Located near restaurants, parks and beaches. Don't miss this fantastic opportunity! **Sale Conditions:** None **Schools:** [Kamaile](#), [Waianae](#), [Waianae](#) \* [Request Showing](#), [Photos](#), [History](#), [Maps](#), [Deed](#), [Watch List](#), [Tax Info](#)



Address	Price	Bd & Bth	Living / Avg.	Land   Avg.	DOM
<a href="#">84-965 Farrington Highway B912A</a>	\$375,000	1 & 1/0	456   \$822	97,749   \$4	103

Address	Tax   Maint.   Ass.	Assessed Land	Assessed Building	Assessed Total	Ratio	Year & Remodeled
<a href="#">84-965 Farrington Highway B912A</a>	\$63   \$993   \$0	\$7,700	\$312,500	\$320,200	117%	1967 & 2005

[84-965 Farrington Highway B912A](#) - MLS#: [202406606](#) - Stunning unobstructed ocean and mountain views await you from this HIGH FLOOR 1 bdrm/1 bath/1 pkg unit in Makaha Beach Cabanas. Nestled on the Waianae Coast, this oceanfront unit features travertine floors, granite countertops and an energy saving tankless water heater. Relax on your private lanai as you take in the breathtaking views with the white sandy beach and the tranquil Blue Pacific right in your backyard. Located near restaurants, parks and beaches. Don't miss this fantastic opportunity! **Region:** Leeward **Neighborhood:** Makaha **Condition:** Above Average **Parking:** Guest, Open - 1, Secured Entry, Unassigned **Total Parking:** 1 **View:** Coastline, Mountain, Ocean, Sunset **Frontage:** Ocean,Sandy Beach **Pool:** **Zoning:** 12 - A-2 Medium Density Apartme **Sale Conditions:** None **Schools:** [Kamaile](#), [Waianae](#), [Waianae](#) \* [Request Showing](#), [Photos](#), [History](#), [Maps](#), [Deed](#), [Watch List](#), [Tax Info](#)

DOM = Days on Market