

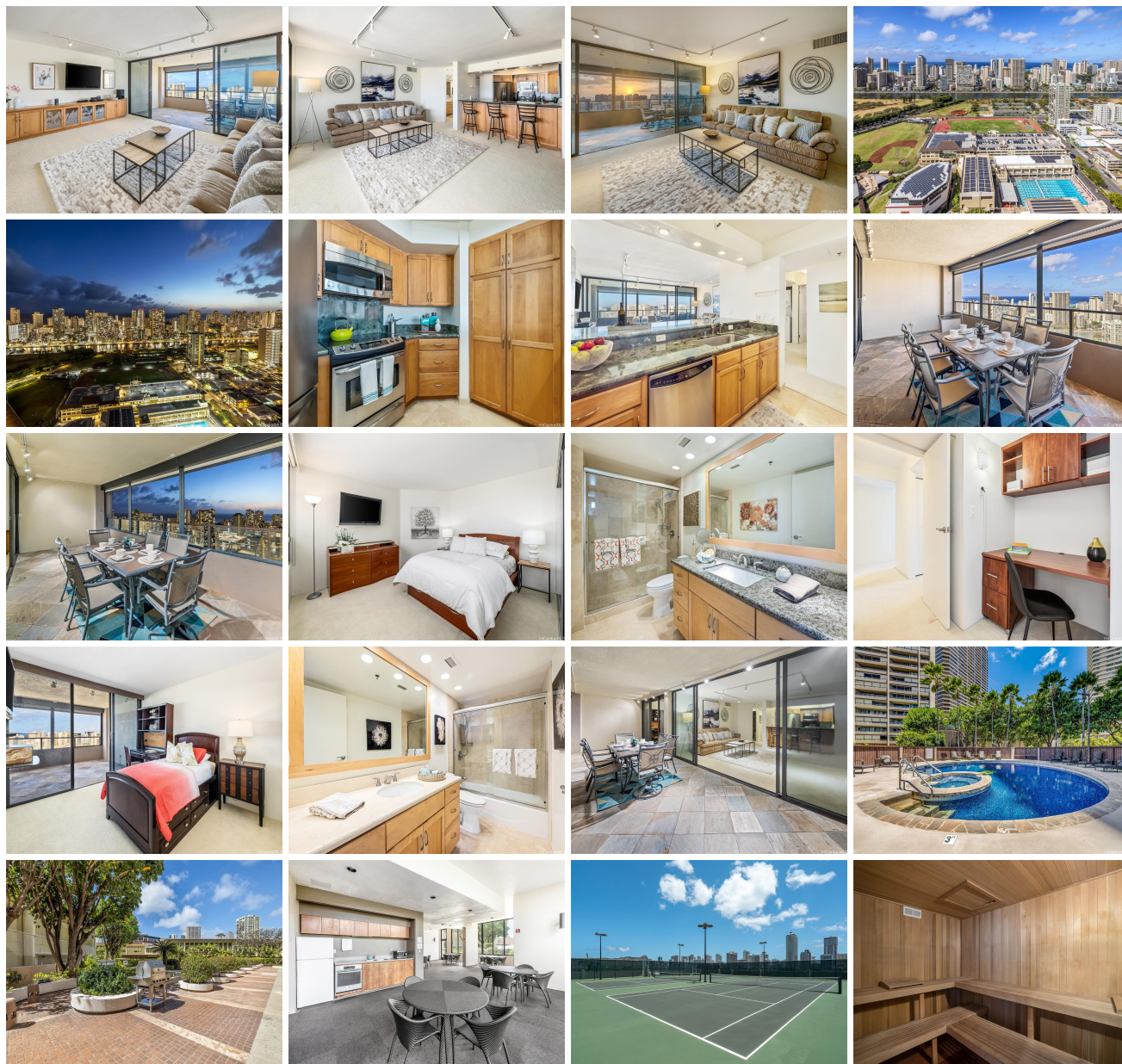
Royal Iolani 583 Kamoku Street Unit DH/PH-7, Honolulu 96826 * \$875,000 * Originally \$988,000

Beds: 2	MLS#: 202406768, FS	Year Built: 1978
Bath: 2/0	Status: Active	Remodeled: 2010
Living Sq. Ft.: 1,082	List Date & DOM: 04-08-2024 & 98	Total Parking: 1
Land Sq. Ft.: 119,006	Condition: Excellent	Assessed Value
Lanai Sq. Ft.: 331	Frontage:	Building: \$573,000
Sq. Ft. Other: 0	Tax/Year: \$190/2023	Land: \$78,200
Total Sq. Ft. 1,413	Neighborhood: Kapiolani	Total: \$651,200
Maint./Assoc. \$1,642 / \$0	Flood Zone : Zone X - Tool	Stories / CPR: One / No
Parking: Assigned, Covered - 1, Guest, Secured Entry	Frontage:	

Zoning: 13 - A-3 High Density Apartment

View: City, Golf Course, Marina/Canal, Ocean, Sunset

Public Remarks: Rarely available Penthouse in highly sought after "Royal Iolani" - Diamond Head Tower! Enjoy Island luxury living high in the sky with invigorating and vibrant views of Ala Wai Canal, Waikiki, Pacific Ocean and part of Ala Wai Golf Course. Tastefully and beautifully renovated in 2010, its timeless/quality design and open floor plan along with the most generous lanai of 331 sq.ft. make this Penthouse a true sense of place where precious privacy matters! The location is ideal and convenient: Iolani High School is just steps away; Waikiki, Ala Wai Golf Course, Ala Moana, Kakaako, beaches, restaurants, and UH etc. are minutes away. Amenities include pool, whirlpool, BBQ area, recreation area, two tennis courts, small gym, sauna, dog park, EV charging station, guest parkings, security and resident manager. This Penthouse, a home in the sky, can be yours today! **Sale Conditions:** None **Schools:** , , * [Request Showing](#), [Photos](#), [History](#), [Maps](#), [Deed](#), [Watch List](#), [Tax Info](#)





Address	Price	Bd & Bth	Living / Avg.	Land Avg.	DOM
583 Kamoku Street DH/PH-7	\$875,000	2 & 2/0	1,082 \$809	119,006 \$7	98

Address	Tax Maint. Ass.	Assessed Land	Assessed Building	Assessed Total	Ratio	Year & Remodeled
583 Kamoku Street DH/PH-7	\$190 \$1,642 \$0	\$78,200	\$573,000	\$651,200	134%	1978 & 2010

[583 Kamoku Street DH/PH-7](#) - MLS#: [202406768](#) - Original price was \$988,000 - Rarely available Penthouse in highly sought after "Royal Iolani" - Diamond Head Tower! Enjoy Island luxury living high in the sky with invigorating and vibrant views of Ala Wai Canal, Waikiki, Pacific Ocean and part of Ala Wai Golf Course. Tastefully and beautifully renovated in 2010, its timeless/quality design and open floor plan along with the most generous lanai of 331 sq.ft. make this Penthouse a true sense of place where precious privacy matters! The location is ideal and convenient: Iolani High School is just steps away; Waikiki, Ala Wai Golf Course, Ala Moana, Kakaako, beaches, restaurants, and UH etc. are minutes away. Amenities include pool, whirlpool, BBQ area, recreation area, two tennis courts, small gym, sauna, dog park, EV charging station, guest parkings, security and resident manager. This Penthouse, a home in the sky, can be yours today! **Region:** Metro **Neighborhood:** Kapiolani **Condition:** Excellent **Parking:** Assigned, Covered - 1, Guest, Secured Entry **Total Parking:** 1 **View:** City, Golf Course, Marina/Canal, Ocean, Sunset **Frontage:** **Pool:** **Zoning:** 13 - A-3 High Density Apartment **Sale Conditions:** None **Schools:** , , * [Request Showing](#), [Photos](#), [History](#), [Maps](#), [Deed](#), [Watch List](#), [Tax Info](#)

DOM = Days on Market