

**PALM COURT 91-568 Puamaeole Street Unit 50T, Ewa Beach 96706 \* \$515,000 \* Originally**

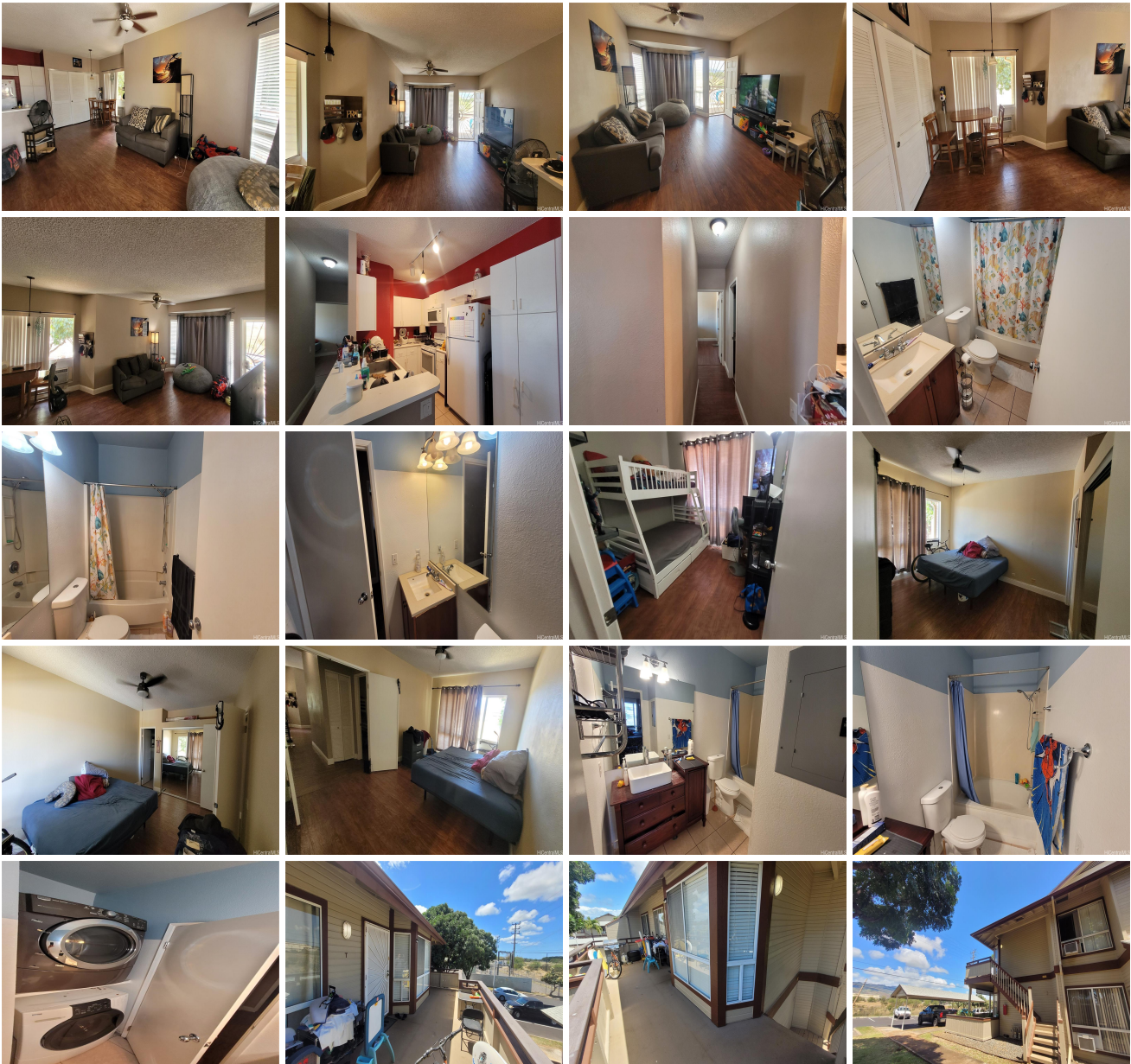
**\$530,000**

Beds: <b>2</b>	MLS#: <b>202406876, FS</b>	Year Built: <b>1991</b>
Bath: <b>2/0</b>	Status: <b>Active</b>	Remodeled: <b>2015</b>
Living Sq. Ft.: <b>874</b>	List Date & DOM: <b>03-22-2024 &amp; 116</b>	Total Parking: <b>2</b>
Land Sq. Ft.: <b>77,537</b>	Condition: <b>Above Average</b>	<a href="#">Assessed Value</a>
Lanai Sq. Ft.: <b>205</b>	Frontage: <b>Other</b>	Building: <b>\$337,800</b>
Sq. Ft. Other: <b>0</b>	Tax/Year: <b>\$134/2023</b>	Land: <b>\$221,900</b>
Total Sq. Ft. <b>1,079</b>	Neighborhood: <b>Ewa</b>	Total: <b>\$559,700</b>
Maint./Assoc. <b>\$546 / \$39</b>	<a href="#">Flood Zone</a> : <b>Zone D - Tool</b>	Stories / CPR: <b>Two / No</b>
Parking: <b>Assigned, Covered - 1, Guest, Open - 1</b>	Frontage: <b>Other</b>	

**Zoning: 11 - A-1 Low Density Apartment**

**View: Mountain**

**Public Remarks:** This well maintained 2 bedroom 2 bath top floor corner end, unit with a large open patio. This perimeter unit has a fantastic mountain view making it the perfect place to call home. The home comes with updated bathrooms, laminate floors, gas range, full size front load washer and dryer, ceiling fans, air conditioning, lots of storage and 2 parking stalls. Located in the gated community of Palm court, this complex has it all, with a community swimming pool, BBQ area, guest parking and multiple seating areas. The convenient location offers easy access to the freeway, parks, Olinia shopping center, movie heaters, schools, golf courses, and beaches. **Sale Conditions:** None **Schools:** [Ewa](#), [Ewa Makai](#), [Campbell](#) \* [Request Showing](#), [Photos](#), [History](#), [Maps](#), [Deed](#), [Watch List](#), [Tax Info](#)





Address	Price	Bd & Bth	Living / Avg.	Land   Avg.	DOM
<a href="#">91-568 Puamaeole Street 50T</a>	<b>\$515,000</b>	2 & 2/0	874   \$589	77,537   \$7	116

Address	Tax   Maint.   Ass.	Assessed Land	Assessed Building	Assessed Total	Ratio	Year & Remodeled
<a href="#">91-568 Puamaeole Street 50T</a>	\$134   \$546   \$39	\$221,900	\$337,800	\$559,700	92%	1991 & 2015

[91-568 Puamaeole Street 50T](#) - MLS#: [202406876](#) - Original price was \$530,000 - This well maintained 2 bedroom 2 bath top floor corner end, unit with a large open patio. This perimeter unit has a fantastic mountain view making it the perfect place to call home. The home comes with updated bathrooms, laminate floors, gas range, full size front load washer and dryer, ceiling fans, air conditioning, lots of storage and 2 parking stalls. Located in the gated community of Palm court, this complex has it all, with a community swimming pool, BBQ area, guest parking and multiple seating areas. The convenient location offers easy access to the freeway, parks, Oline shopping center, movie heaters, schools, golf courses, and beaches. **Region:** Ewa Plain **Neighborhood:** Ewa **Condition:** Above Average **Parking:** Assigned, Covered - 1, Guest, Open - 1 **Total Parking:** 2 **View:** Mountain **Frontage:** Other **Pool:** **Zoning:** 11 - A-1 Low Density Apartment **Sale Conditions:** None **Schools:** [Ewa](#), [Ewa Makai](#), [Campbell](#) \* [Request Showing](#), [Photos](#), [History](#), [Maps](#), [Deed](#), [Watch List](#), [Tax Info](#)

DOM = Days on Market