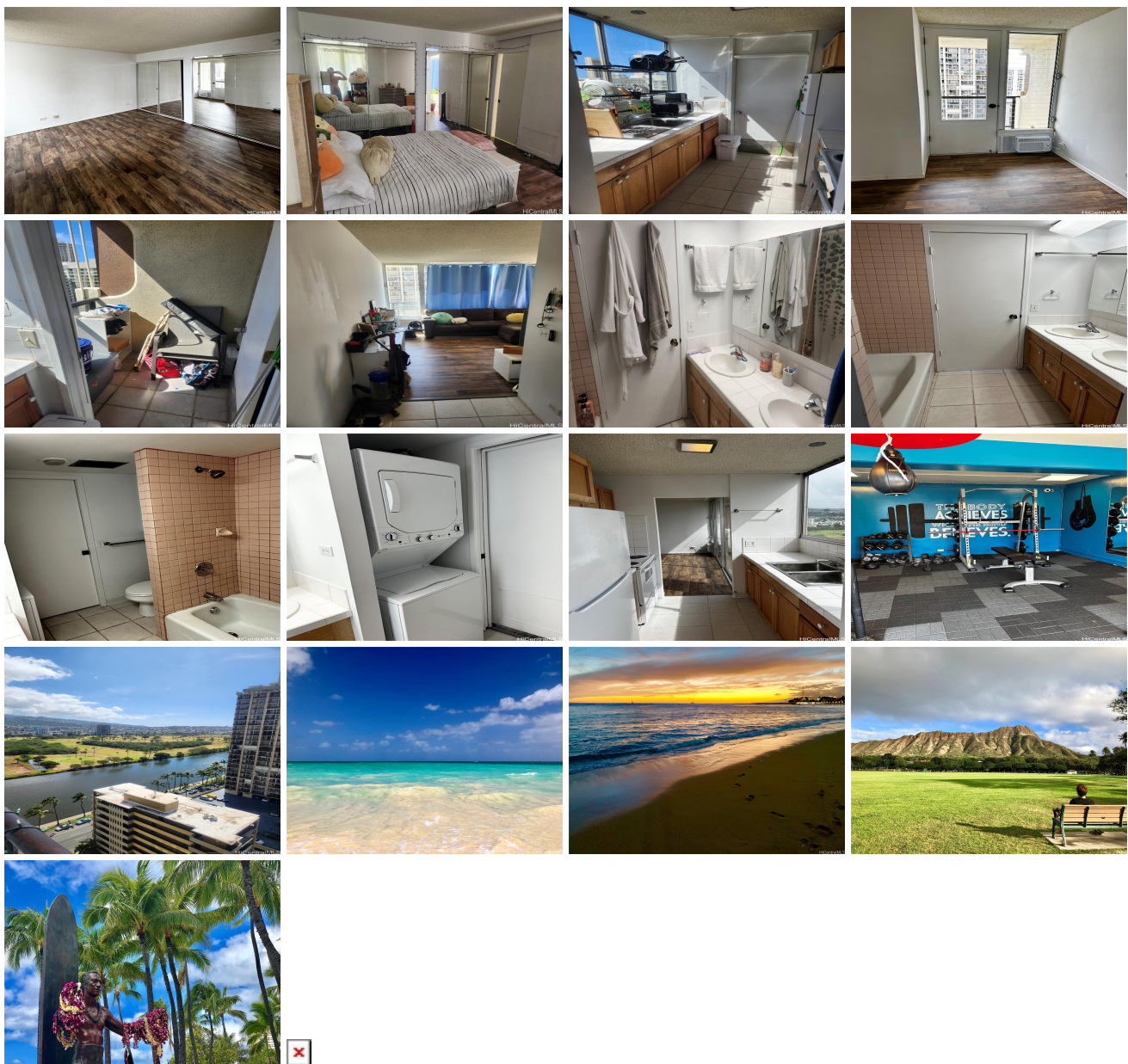


444 Nahua 444 Nahua Street Unit 2005, Honolulu 96815 * \$199,000 * Originally \$220,000

Beds: 1	MLS#: 202406893, LH	Year Built: 1976
Bath: 1/0	Status: Active	Remodeled:
Living Sq. Ft.: 521	List Date & DOM: 03-22-2024 & 117	Total Parking: 1
Land Sq. Ft.: 23,348	Condition: Average	Assessed Value
Lanai Sq. Ft.: 0	Frontage: Other	Building: \$273,100
Sq. Ft. Other: 0	Tax/Year: \$114/2023	Land: \$118,800
Total Sq. Ft. 521	Neighborhood: Waikiki	Total: \$391,900
Maint./Assoc. \$941 / \$0	Flood Zone : Zone AE - Tool	Stories / CPR: 21+ / No
Parking: Assigned, Covered - 1	Frontage: Other	
Zoning : X2 - Apartment Precinct	View: City, Marina/Canal, Mountain	

Public Remarks: Skip all the hustles for an investment in Waikiki! Rarely available! This 1 bed 1 bath unit with secured covered parking has is a very popular unit among renters and have a wonderful one already in it! Renovated early 2023 and the same tenant has been living in the unit comfortably since. The property is located in the heart of Waikiki but away from the hustle and bustle. Minutes away from Waikiki Beach, Ala Moana Beach, shopping and a block away from the International Market Place. **Sale Conditions:** None **Schools:** [Jefferson](#), [Washington](#), [Kaimuki](#) * [Request Showing](#), [Photos](#), [History](#), [Maps](#), [Deed](#), [Watch List](#), [Tax Info](#)



Address	Price	Bd & Bth	Living / Avg.	Land Avg.	DOM
444 Nahua Street 2005	\$199,000 LH	1 & 1/0	521 \$382	23,348 \$9	117

Address	Tax Maint. Ass.	Assessed Land	Assessed Building	Assessed Total	Ratio	Year & Remodeled
444 Nahua Street 2005	\$114 \$941 \$0	\$118,800	\$273,100	\$391,900	51%	1976 & NA

[444 Nahua Street 2005](#) - MLS#: [202406893](#) - Original price was \$220,000 - Skip all the hustles for an investment in Waikiki! Rarely available! This 1 bed 1 bath unit with secured covered parking has is a very popular unit among renters and have a wonderful one already in it! Renovated early 2023 and the same tenant has been living in the unit comfortably since. The property is located in the heart of Waikiki but away from the hustle and bustle. Minutes away from Waikiki Beach, Ala Moana Beach, shopping and a block away from the International Market Place. **Region:** Metro **Neighborhood:** Waikiki **Condition:** Average **Parking:** Assigned, Covered - 1 **Total Parking:** 1 **View:** City, Marina/Canal, Mountain **Frontage:** Other **Pool:** **Zoning:** X2 - Apartment Precinct **Sale Conditions:** None **Schools:** [Jefferson](#), [Washington](#), [Kaimuki](#) * [Request Showing](#), [Photos](#), [History](#), [Maps](#), [Deed](#), [Watch List](#), [Tax Info](#)

DOM = Days on Market