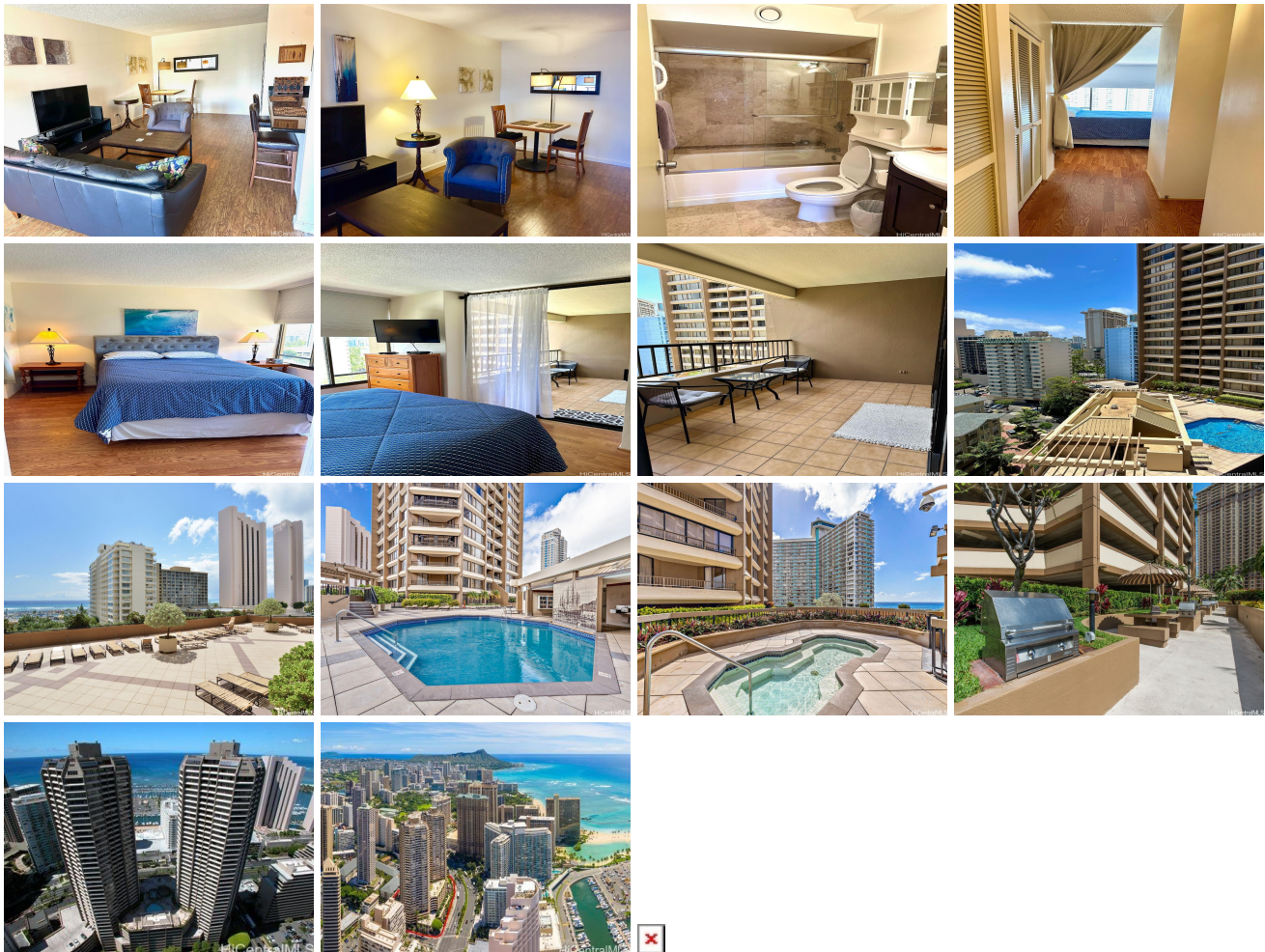


**Discovery Bay 1778 Ala Moana Boulevard Unit 1607, Honolulu 96815 \* \$320,000**

Beds: <b>1</b>	MLS#: <b>202406914, LH</b>	Year Built: <b>1977</b>
Bath: <b>1/0</b>	Status: <b>Active</b>	Remodeled: <b>2016</b>
Living Sq. Ft.: <b>683</b>	List Date & DOM: <b>03-23-2024 &amp; 115</b>	Total Parking: <b>1</b>
Land Sq. Ft.: <b>84,463</b>	Condition: <b>Above Average</b>	<a href="#">Assessed Value</a>
Lanai Sq. Ft.: <b>86</b>	Frontage:	Building: <b>\$548,900</b>
Sq. Ft. Other: <b>0</b>	Tax/Year: <b>\$164/2023</b>	Land: <b>\$13,200</b>
Total Sq. Ft. <b>769</b>	Neighborhood: <b>Waikiki</b>	Total: <b>\$562,100</b>
Maint./Assoc. <b>\$917 / \$0</b>	<a href="#">Flood Zone</a> : <b>Zone AE - Tool</b>	Stories / CPR: <b>21+ / No</b>
Parking: <b>Assigned, Secured Entry</b>	Frontage:	
<a href="#">Zoning</a> : <b>X2 - Apartment Precinct</b>	View: <b>City, Mountain, Other, Sunrise</b>	

**Public Remarks:** You will love living in this beautiful large fully furnished 1 bedroom condominium, located on the 16th floor of the prestigious Discovery Bay. This unit had a full remodel in 2016 and has everything you will need, including Central A/C, Washer/Dryer, Furniture, Bedding, Towels, and Kitchenware. Building amenities include a wonderful management, refreshing swimming pool, relaxing Jacuzzi, a Bar-B-Q area, and fitness rooms. The large sun deck has beautiful ocean and marina views and is a great place to work on that tan. SECURITY FEATURES INCLUDE INTERCOM, LOCKED LOBBY, PRIVATE GUARDS, AND VIDEO MONITORING. Discovery Bay is located on the less congested, and popular west end of Waikiki where it is within easy walking distance to Ala Moana Shopping Center, Ala Moana Beach Park, Hilton Hawaiian Village, popular restaurants, and Waikiki beaches. Includes 1 assigned parking space in the parking garage. This unit is currently leasehold, but you are now eligible to purchase 96.893% of the fee for \$129,816 (+ closing costs). If you crunch the numbers, you will find this an exceptional value for this area of Waikiki. Being sold fully furnished and "AS IS". **Sale Conditions:** None **Schools:** [Jefferson](#), [Washington](#), [Kaimuki](#) \* [Request Showing](#), [Photos](#), [History](#), [Maps](#), [Deed](#), [Watch List](#), [Tax Info](#)



Address	Price	Bd & Bth	Living / Avg.	Land   Avg.	DOM
<a href="#">1778 Ala Moana Boulevard 1607</a>	<b>\$320,000 LH</b>	1 & 1/0	683   \$469	84,463   \$4	115

Address	Tax   Maint.   Ass.	Assessed Land	Assessed Building	Assessed Total	Ratio	Year & Remodeled

<a href="#">1778 Ala Moana Boulevard 1607</a>	\$164   \$917   \$0	\$13,200	\$548,900	\$562,100	57%	1977 & 2016
---	---------------------	----------	-----------	-----------	-----	-------------

[1778 Ala Moana Boulevard 1607](#) - MLS#: [202406914](#) - You will love living in this beautiful large fully furnished 1 bedroom condominium, located on the 16th floor of the prestigious Discovery Bay. This unit had a full remodel in 2016 and has everything you will need, including Central A/C, Washer/Dryer, Furniture, Bedding, Towels, and Kitchenware. Building amenities include a wonderful management, refreshing swimming pool, relaxing Jacuzzi, a Bar-B-Q area, and fitness rooms. The large sun deck has beautiful ocean and marina views and is a great place to work on that tan. SECURITY FEATURES INCLUDE INTERCOM, LOCKED LOBBY, PRIVATE GUARDS, AND VIDEO MONITORING. Discovery Bay is located on the less congested, and popular west end of Waikiki where it is within easy walking distance to Ala Moana Shopping Center, Ala Moana Beach Park, Hilton Hawaiian Village, popular restaurants, and Waikiki beaches. Includes 1 assigned parking space in the parking garage. This unit is currently leasehold, but you are now eligible to purchase 96.893% of the fee for \$129,816 (+ closing costs). If you crunch the numbers, you will find this an exceptional value for this area of Waikiki. Being sold fully furnished and "AS IS". **Region:** Metro **Neighborhood:** Waikiki **Condition:** Above Average **Parking:** Assigned, Secured Entry **Total Parking:** 1 **View:** City, Mountain, Other, Sunrise **Frontage:** **Pool:** **Zoning:** X2 - Apartment Precinct **Sale Conditions:** None **Schools:** [Jefferson](#), [Washington](#), [Kaimuki](#) \* [Request Showing](#), [Photos](#), [History](#), [Maps](#), [Deed](#), [Watch List](#), [Tax Info](#)

DOM = Days on Market