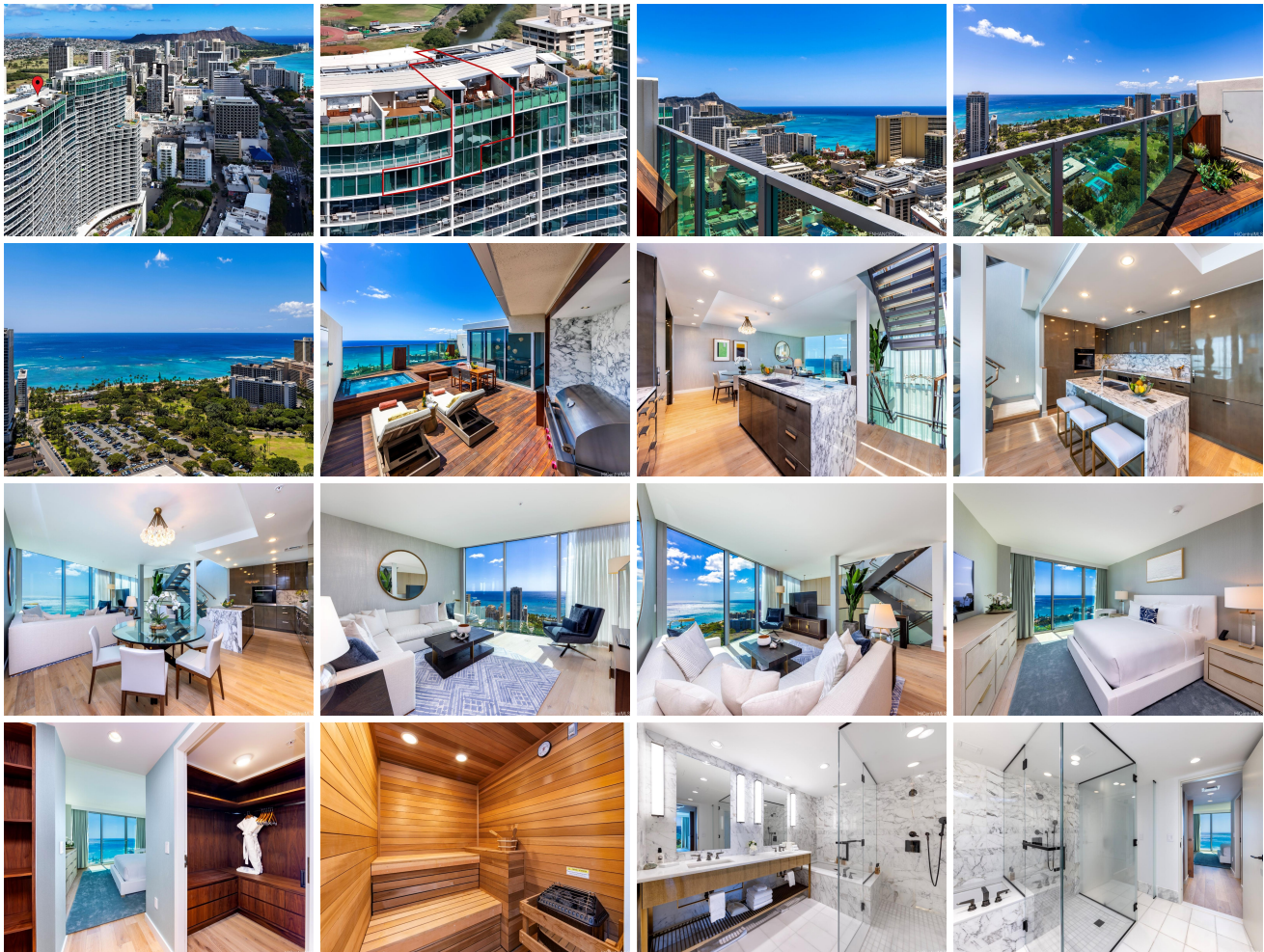


The Ritz-Carlton Residences - 383 Kalaim 383 Kalaimoku Street Unit PHG, Honolulu 96815

*** The Ritz-Carlton Residences - 383 Kalaim * \$6,200,000**

Beds: 3	MLS#: 202407025, FS	Year Built: 2014
Bath: 3/1	Status: Active	Remodeled:
Living Sq. Ft.: 2,386	List Date & DOM: 03-27-2024 & 112	Total Parking: 0
Land Sq. Ft.: 0	Condition: Excellent	Assessed Value
Lanai Sq. Ft.: 585	Frontage: Other	Building: \$5,878,800
Sq. Ft. Other: 0	Tax/Year: \$7,063/2023	Land: \$289,100
Total Sq. Ft. 2,971	Neighborhood: Waikiki	Total: \$6,167,900
Maint./Assoc. \$5,860 / \$0	Flood Zone : Zone AO - Tool	Stories / CPR: Three+ / No
Parking: None, Guest, Other	Frontage: Other	
Zoning : X6 - Resort Mixed Use Precinct	View: Coastline, Diamond Head, Ocean, Sunset	

Public Remarks: Elevate your lifestyle of luxury to unparalleled heights at Penthouse #G at The Ritz-Carlton Residences Waikiki. This sophisticated retreat features an island-modern 3 bedroom, 3.5 bath, 3-story floor plan, highlighted by a private rooftop lanai w/ swimming pool, hot tub, & built-in barbecue, all w/ Pacific Ocean & coastline views from Diamond Head sweeping across Waikiki Beach. The entry level bathes you in natural light from a living room space w/ two-story floor-to-ceiling windows & Pacific Ocean views. Two ocean view bedrooms on the entry level, incl. a grand primary suite w/ private sauna. The second level features primary living spaces; a chef's kitchen w/ lacquer cabinetry, granite countertops, & Miele appliances, a formal living room, & dining area, all with Pacific Ocean views. A third bedroom sits on the cooler side w/ majestic Koolau mountain vistas. An exceptional value property compared to similarly-priced Honolulu luxury condominiums. Fine luxury resort amenities, on-site restaurants, cleaning service, valet parking, & more. A lifestyle of luxury a step above the extraordinary awaits at The Ritz-Carlton Residences Waikiki Penthouse #G. Listing incl. enhanced photos. **Sale Conditions:** None **Schools:** , , * [Request Showing](#), [Photos](#), [History](#), [Maps](#), [Deed](#), [Watch List](#), [Tax Info](#)





Address	Price	Bd & Bth	Living / Avg.	Land Avg.	Lanai	Occ.	FL	DOM
383 Kalaimoku Street PHG	\$6,200,000	3 & 3/1	2,386 \$2,598	0 \$inf	585	15%	37	112

Address	Tax Maint. Ass.	Assessed Land	Assessed Building	Assessed Total	Ratio	Year & Remodeled
383 Kalaimoku Street PHG	\$7,063 \$5,860 \$0	\$289,100	\$5,878,800	\$6,167,900	101%	2014 & NA

[383 Kalaimoku Street PHG](#) - MLS#: [202407025](#) - Elevate your lifestyle of luxury to unparalleled heights at Penthouse #G at The Ritz-Carlton Residences Waikiki. This sophisticated retreat features an island-modern 3 bedroom, 3.5 bath, 3-story floor plan, highlighted by a private rooftop lanai w/ swimming pool, hot tub, & built-in barbecue, all w/ Pacific Ocean & coastline views from Diamond Head sweeping across Waikiki Beach. The entry level bathes you in natural light from a living room space w/ two-story floor-to-ceiling windows & Pacific Ocean views. Two ocean view bedrooms on the entry level, incl. a grand primary suite w/ private sauna. The second level features primary living spaces; a chef's kitchen w/ lacquer cabinetry, granite countertops, & Miele appliances, a formal living room, & dining area, all with Pacific Ocean views. A third bedroom sits on the cooler side w/ majestic Koolau mountain vistas. An exceptional value property compared to similarly-priced Honolulu luxury condominiums. Fine luxury resort amenities, on-site restaurants, cleaning service, valet parking, & more. A lifestyle of luxury a step above the extraordinary awaits at The Ritz-Carlton Residences Waikiki Penthouse #G. Listing incl. enhanced photos. **Region:** Metro **Neighborhood:** Waikiki **Condition:** Excellent **Parking:** None, Guest, Other **Total Parking:** 0 **View:** Coastline, Diamond Head, Ocean, Sunset **Frontage:** Other **Pool:** **Zoning:** X6 - Resort Mixed Use Precinct **Sale Conditions:** None **Schools:** , , * [Request Showing](#), [Photos](#), [History](#), [Maps](#), [Deed](#), [Watch List](#), [Tax Info](#)

DOM = Days on Market, Occ. = Occupancy, FL = Floor Number