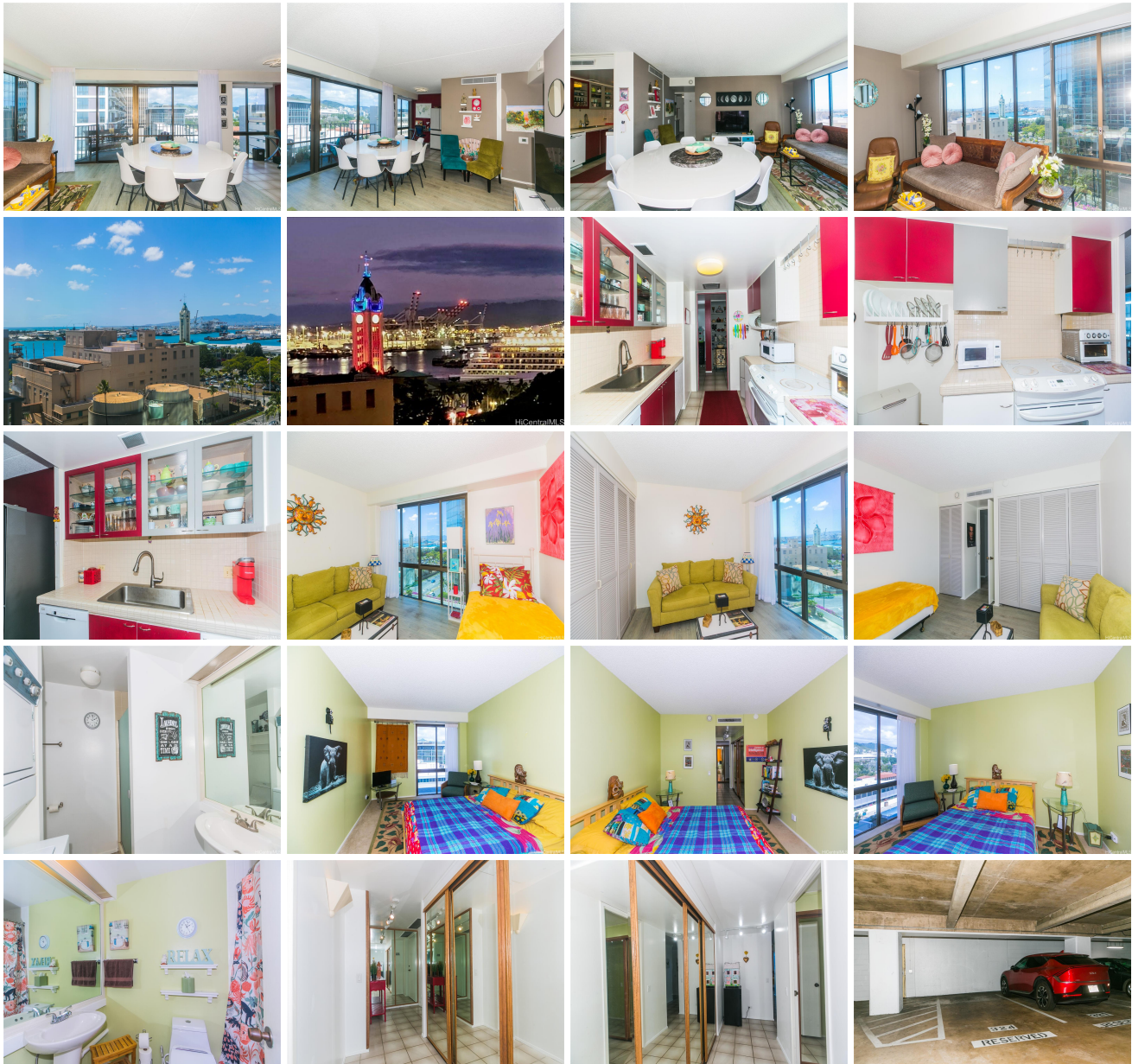


Harbor Square 700 Richards Street Unit 1104, Honolulu 96813 * \$650,000

Beds: 2	MLS#: 202407058, FS	Year Built: 1971
Bath: 2/0	Status: Active	Remodeled: 2019
Living Sq. Ft.: 1,014	List Date & DOM: 03-26-2024 & 113	Total Parking: 1
Land Sq. Ft.: 0	Condition: Above Average	Assessed Value
Lanai Sq. Ft.: 86	Frontage: Other	Building: \$596,400
Sq. Ft. Other: 0	Tax/Year: \$30/2023	Land: \$75,700
Total Sq. Ft. 1,100	Neighborhood: Downtown	Total: \$672,100
Maint./Assoc. \$1,609 / \$0	Flood Zone : Zone X - Tool	Stories / CPR: 21+ / No
Parking: Assigned, Covered - 1	Frontage: Other	
Zoning : 34 - BMX-4 Central Business Mix	View: City, Coastline, Mountain, Ocean, Sunset	

Public Remarks: Beautiful corner unit with harbor, ocean, and mountain views! Cool Hawaiian breezes throughout the unit. Air conditioning, electricity, basic cable and internet are all included in your maintenance fee. Flooring include Ceramic tile, upscale laminate and carpeted bedroom. Separate private bedrooms with one ensuite and extra closet space for storage. Large family room with table seating up to 10 or more. Window treatments, kitchen upgrades in 2023 with new backsplash and sink. This location is in the heart of Downtown Honolulu close to freeway access, Kakaako, Whole Foods, Aloha Tower/HPU College, Chinatown, Waikiki and a direct ride to Honolulu International Airport by car or public bus. Also close to Queens Hospital, Straub Hospital, Kaiser Hospital, Iolani Palace and State Capital Building. Enjoy the convenient location near so many restaurants, shops and more! **Sale Conditions:** None **Schools:** [Royal](#), [Keelikolani](#), [Mckinley](#) * [Request Showing](#), [Photos](#), [History](#), [Maps](#), [Deed](#), [Watch List](#), [Tax Info](#)





Address	Price	Bd & Bth	Living / Avg.	Land Avg.	DOM
700 Richards Street 1104	\$650,000	2 & 2/0	1,014 \$641	0 \$inf	113

Address	Tax Maint. Ass.	Assessed Land	Assessed Building	Assessed Total	Ratio	Year & Remodeled
700 Richards Street 1104	\$30 \$1,609 \$0	\$75,700	\$596,400	\$672,100	97%	1971 & 2019

[700 Richards Street 1104](#) - MLS#: [202407058](#) - Beautiful corner unit with harbor, ocean, and mountain views! Cool Hawaiian breezes throughout the unit. Air conditioning, electricity, basic cable and internet are all included in your maintenance fee. Flooring include Ceramic tile, upscale laminate and carpeted bedroom. Separate private bedrooms with one ensuite and extra closet space for storage. Large family room with table seating up to 10 or more. Window treatments, kitchen upgrades in 2023 with new backsplash and sink. This location is in the heart of Downtown Honolulu close to freeway access, Kakaako, Whole Foods, Aloha Tower/HPU College, Chinatown, Waikiki and a direct ride to Honolulu International Airport by car or public bus. Also close to Queens Hospital, Straub Hospital, Kaiser Hospital, Iolani Palace and State Capital Building. Enjoy the convenient location near so many restaurants, shops and more! **Region:** Metro **Neighborhood:** Downtown **Condition:** Above Average **Parking:** Assigned, Covered - 1 **Total Parking:** 1 **View:** City, Coastline, Mountain, Ocean, Sunset **Frontage:** Other **Pool:** **Zoning:** 34 - BMX-4 Central Business Mix **Sale Conditions:** None **Schools:** [Royal](#), [Keelikolani](#), [Mckinley](#) * [Request Showing](#), [Photos](#), [History](#), [Maps](#), [Deed](#), [Watch List](#), [Tax Info](#)

DOM = Days on Market