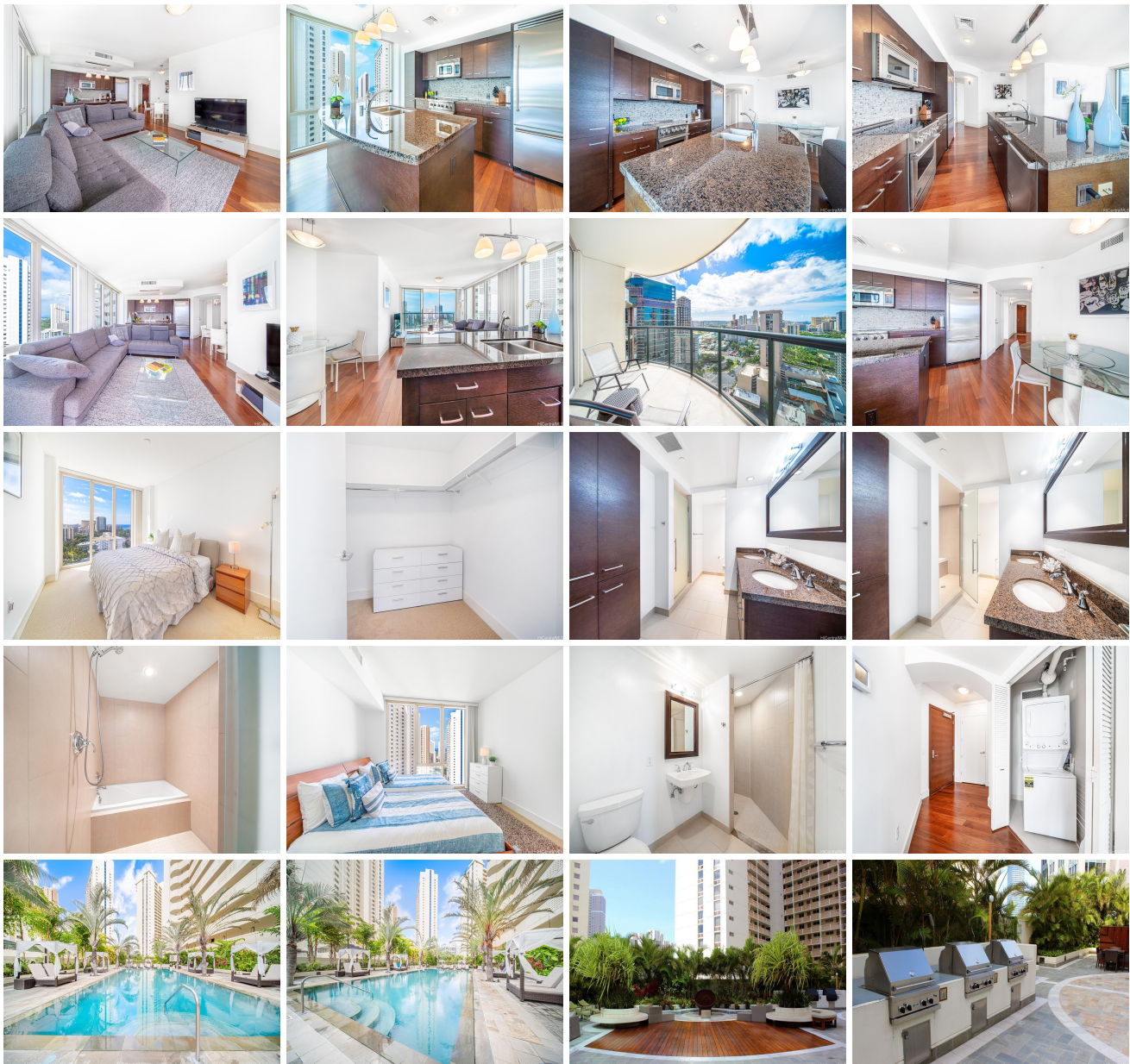


**Allure Waikiki 1837 Kalakaua Avenue Unit 2401, Honolulu 96815 \* \$1,290,000**

Beds: <b>2</b>	MLS#: <b>202407073, FS</b>	Year Built: <b>2009</b>
Bath: <b>2/0</b>	Status: <b>Active</b>	Remodeled:
Living Sq. Ft.: <b>1,216</b>	List Date & DOM: <b>03-26-2024 &amp; 96</b>	Total Parking: <b>2</b>
Land Sq. Ft.: <b>0</b>	Condition: <b>Excellent</b>	<a href="#">Assessed Value</a>
Lanai Sq. Ft.: <b>88</b>	Frontage: <b>Other</b>	Building: <b>\$998,900</b>
Sq. Ft. Other: <b>0</b>	Tax/Year: <b>\$368/2023</b>	Land: <b>\$37,500</b>
Total Sq. Ft. <b>1,304</b>	Neighborhood: <b>Waikiki</b>	Total: <b>\$1,036,400</b>
Maint./Assoc. <b>\$1,302 / \$0</b>	<a href="#">Flood Zone</a> : <b>Zone AO,Zo - Tool</b>	Stories / CPR: <b>21+ / No</b>
Parking: <b>Assigned, Covered - 2</b>	Frontage: <b>Other</b>	
<a href="#">Zoning</a> : <b>X6 - Resort Mixed Use Precinct</b>	View: <b>City, Mountain, Ocean</b>	

**Public Remarks:** Allure Waikiki is located at the gateway to Waikiki. This spacious two bedroom, two bath unit features its own balcony and comes with two covered parking stalls. Floor-to-ceiling windows, gourmet appliances, granite counter tops in Kitchen. The bathroom has a walk-in soaking tub. 24-hour security, luxury resort amenities including a heated pool, hot tub, barbecue, fitness gym, and party/meeting rooms. In close proximity to shops, restaurants, and shopping centers. Enjoy the urban resort lifestyle of Waikiki! **Sale Conditions:** None **Schools:** , , \* [Request Showing](#), [Photos](#), [History](#), [Maps](#), [Deed](#), [Watch List](#), [Tax Info](#)





Address	Price	Bd & Bth	Living / Avg.	Land   Avg.	DOM
<a href="#">1837 Kalakaua Avenue 2401</a>	<a href="#">\$1,290,000</a>	2 & 2/0	1,216   \$1,061	0   \$inf	96

Address	Tax   Maint.   Ass.	Assessed Land	Assessed Building	Assessed Total	Ratio	Year & Remodeled
<a href="#">1837 Kalakaua Avenue 2401</a>	\$368   \$1,302   \$0	\$37,500	\$998,900	\$1,036,400	124%	2009 & NA

[1837 Kalakaua Avenue 2401](#) - MLS#: [202407073](#) - Allure Waikiki is located at the gateway to Waikiki. This spacious two bedroom, two bath unit features its own balcony and comes with two covered parking stalls. Floor-to-ceiling windows, gourmet appliances, granite counter tops in Kitchen. The bathroom has a walk-in soaking tub. 24-hour security, luxury resort amenities including a heated pool, hot tub, barbecue, fitness gym, and party/meeting rooms. In close proximity to shops, restaurants, and shopping centers. Enjoy the urban resort lifestyle of Waikiki! **Region:** Metro **Neighborhood:** Waikiki **Condition:** Excellent **Parking:** Assigned, Covered - 2 **Total Parking:** 2 **View:** City, Mountain, Ocean **Frontage:** Other **Pool:** **Zoning:** X6 - Resort Mixed Use Precinct **Sale Conditions:** None **Schools:** , , \* [Request Showing](#), [Photos](#), [History](#), [Maps](#), [Deed](#), [Watch List](#), [Tax Info](#)

DOM = Days on Market