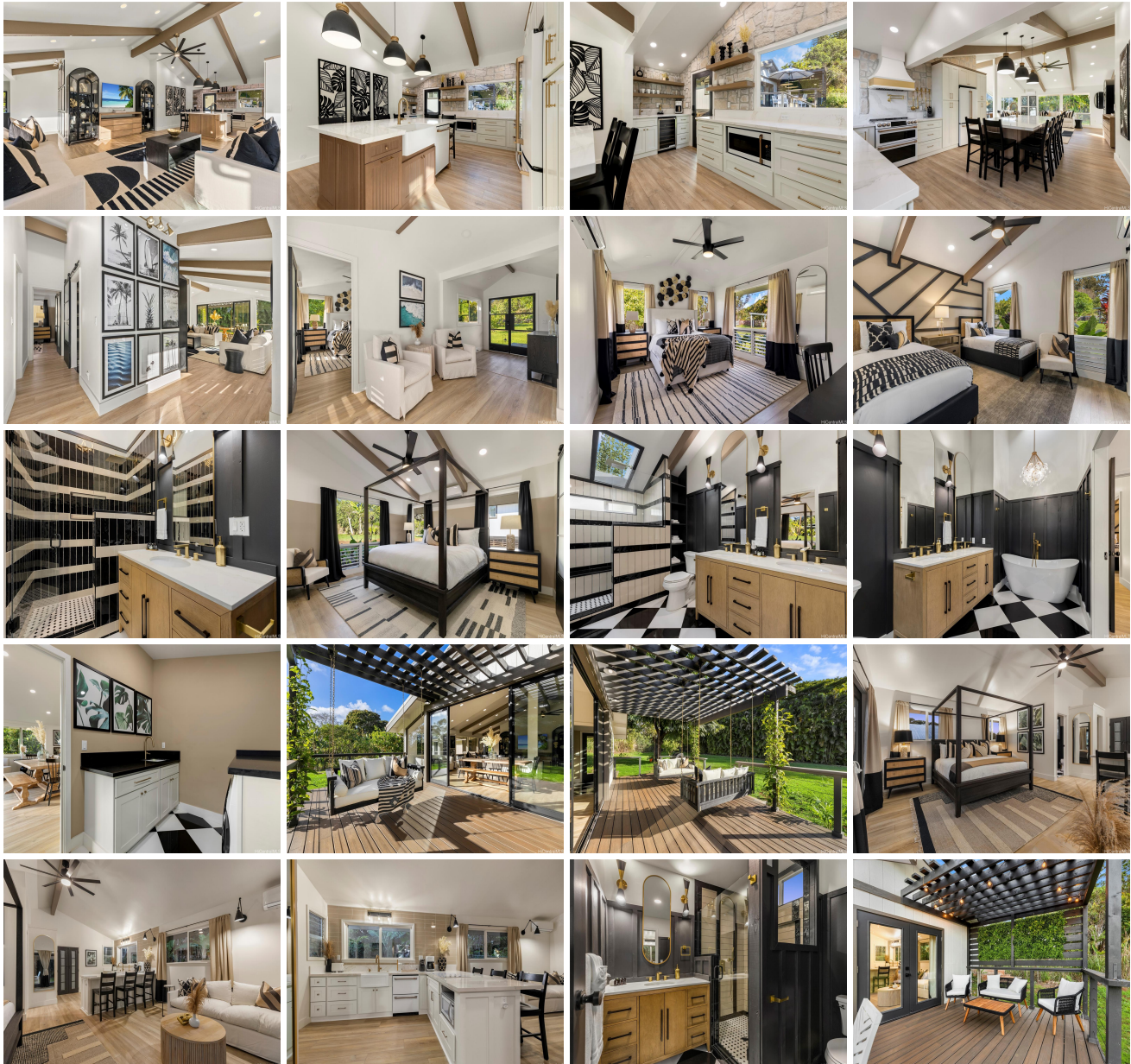


59-405 Pupukea Road, Haleiwa 96712 * * \$3,200,000 * Originally \$3,600,000

Beds: 4	MLS#: <u>202407283</u>, FS	Year Built: 1978
Bath: 3/0	Status: Active	Remodeled: 2022
Living Sq. Ft.: 2,128	List Date & DOM: 04-12-2024 & 95	Total Parking: 3
Land Sq. Ft.: 47,219	Condition: Excellent	Assessed Value
Lanai Sq. Ft.: 600	Frontage:	Building: \$596,400
Sq. Ft. Other: 434	Tax/Year: \$519/2023	Land: \$1,187,900
Total Sq. Ft. 3,162	Neighborhood: Pupukea	Total: \$1,784,300
Maint./Assoc. \$0 / \$0	Flood Zone : Zone D - Tool	Stories / CPR: One / No
Parking: 3 Car+, Driveway	Frontage:	
Zoning : 56 - Country District	View: Garden, Mountain, Other	

Public Remarks: Available for purchase with a 4.25% VA assumable loan! Experience luxury living in this meticulously crafted Pupukea estate, curated by a local designer with a recent full-scale renovation. The home is fully furnished and decorated, all included in the sale for immediate enjoyment. A grand entrance welcomes you, with a brand-new driveway leading to an automated aluminum gate. The fully fenced yard encompasses two residences, adorned with top-tier redwood fencing for privacy. The main house features 3 bedrooms, 2 bathrooms, a custom kitchen, and a primary bathroom with a skylight rain head and freestanding tub beneath an exquisite chandelier. A detached guest house offers a tranquil retreat with its own deck and kitchen. The backyard oasis boasts over 100 feet of towering areca palms, ideal for hosting gatherings. Meticulously landscaped grounds include over 30 fruit trees, 57 Italian cypress trees, and 3 Puakenikeni trees, enhancing the property's serene ambiance. Additionally, 24 owned solar panels with Net Metering through Hawaiian Electric. See link for virtual tour. Note: Tax records differ from actual square footage. Yard photos have been lightly enhanced. **Sale Conditions:** None **Schools:** , , * [Request Showing](#), [Photos](#), [History](#), [Maps](#), [Deed](#), [Watch List](#), [Tax Info](#)





Address	Price	Bd & Bth	Living / Avg.	Land Avg.	Lanai	Occ.	FL	DOM
59-405 Pupukea Road	\$3,200,000	4 & 3/0	2,128 \$1,504	47,219 \$68	600	0%	0	95

Address	Tax Maint. Ass.	Assessed Land	Assessed Building	Assessed Total	Ratio	Year & Remodeled
59-405 Pupukea Road	\$519 \$0 \$0	\$1,187,900	\$596,400	\$1,784,300	179%	1978 & 2022

[59-405 Pupukea Road](#) - MLS#: [202407283](#) - Original price was \$3,600,000 - Available for purchase with a 4.25% VA assumable loan! Experience luxury living in this meticulously crafted Pupukea estate, curated by a local designer with a recent full-scale renovation. The home is fully furnished and decorated, all included in the sale for immediate enjoyment. A grand entrance welcomes you, with a brand-new driveway leading to an automated aluminum gate. The fully fenced yard encompasses two residences, adorned with top-tier redwood fencing for privacy. The main house features 3 bedrooms, 2 bathrooms, a custom kitchen, and a primary bathroom with a skylight rain head and freestanding tub beneath an exquisite chandelier. A detached guest house offers a tranquil retreat with its own deck and kitchen. The backyard oasis boasts over 100 feet of towering areca palms, ideal for hosting gatherings. Meticulously landscaped grounds include over 30 fruit trees, 57 Italian cypress trees, and 3 Puakenikeni trees, enhancing the property's serene ambiance. Additionally, 24 owned solar panels with Net Metering through Hawaiian Electric. See link for virtual tour. Note: Tax records differ from actual square footage. Yard photos have been lightly enhanced. **Region:** North Shore **Neighborhood:** Pupukea **Condition:** Excellent **Parking:** 3 Car+, Driveway **Total Parking:** 3 **View:** Garden, Mountain, Other **Frontage:** **Pool:** None **Zoning:** 56 - Country District **Sale Conditions:** None **Schools:** , , * [Request Showing](#), [Photos](#), [History](#), [Maps](#), [Deed](#), [Watch List](#), [Tax Info](#)

DOM = Days on Market, Occ. = Occupancy, FL = Floor Number