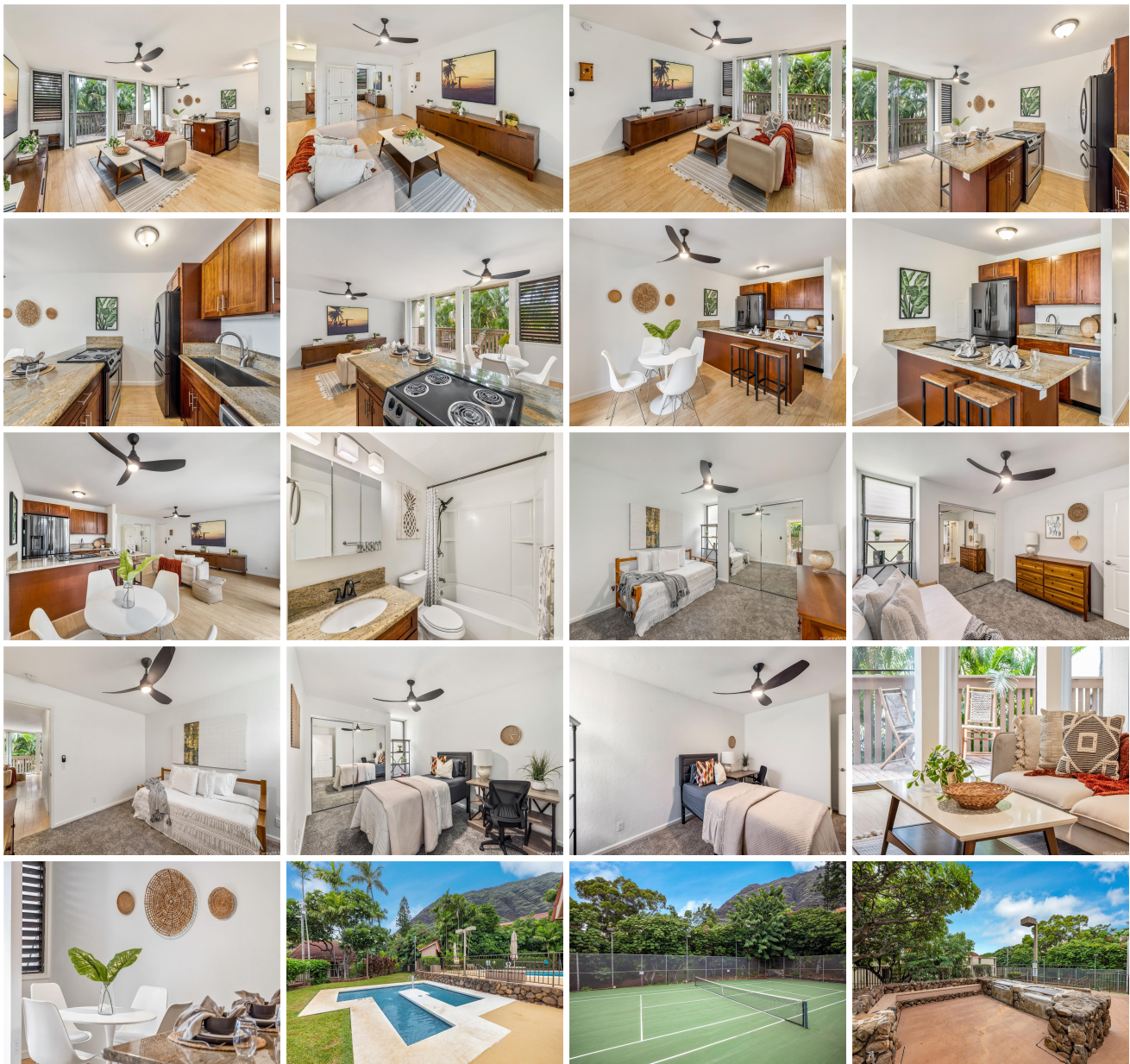


# **Makaha Valley Pltn 84-687 Ala Mahiku Street Unit 124A, Waianae 96792 \* Makaha Valley**

**Pltn \* \$282,000**

|   |   |                                |
|---|---|--------------------------------|
| Beds: <b>2</b>  | MLS#: <b>202407298, FS</b>                        | Year Built: <b>1975</b>        |
| Bath: <b>1/0</b>  | Status: <b>Active Under Contract</b>              | Remodeled: <b>1980</b>         |
| Living Sq. Ft.: <b>815</b>                                      | List Date & DOM: <b>04-23-2024 &amp; 48</b>       | Total Parking: <b>1</b>        |
| Land Sq. Ft.: <b>1,222,729</b>                                  | Condition: <b>Excellent</b>                       | <a href="#">Assessed Value</a> |
| Lanai Sq. Ft.: <b>120</b>                                       | Frontage: <b>Other</b>                            | Building: <b>\$209,800</b>     |
| Sq. Ft. Other: <b>0</b>   | Tax/Year: <b>\$75/2023</b>                        | Land: <b>\$48,400</b>          |
| Total Sq. Ft. <b>935</b>  | Neighborhood: <b>Makaha</b>                       | Total: <b>\$258,200</b>        |
| Maint./Assoc. <b>\$819 / \$0</b>                                | <a href="#">Flood Zone</a> : <b>Zone D - Tool</b> | Stories / CPR: <b>One / No</b> |
| Parking: <b>Assigned, Open - 1</b>                              | Frontage: <b>Other</b>                            |                                |
| <a href="#">Zoning</a> : <b>12 - A-2 Medium Density Apartme</b> | View: <b>Garden</b>                               |                                |

**Public Remarks:** Indulge in the allure of this charming 2-bedroom, 1-bathroom condo nestled in the heart of picturesque Makaha Valley. Discover spacious bedrooms complemented by an open-concept living area, complete with your very own private lanai. Floor-to-ceiling sliding glass doors invite abundant natural light, illuminating the space with warmth. Unwind by the sparkling pool or host gatherings at the BBQ and recreation areas. This gated community offers peace of mind with around-the-clock security and assigned parking stalls for your convenience. Don't overlook the chance to embrace a lifestyle of privacy and tranquility, enveloped by lush landscapes and embraced by the serene ambiance of Makaha Valley. **Sale Conditions:** Short Sale **Schools:** , , \* [Request Showing](#), [Photos](#), [History](#), [Maps](#), [Deed](#), [Watch List](#), [Tax Info](#)



| Address                                       | Price                     | Bd & Bth | Living / Avg. | Land   Avg.     | Lanai | Occ. | FL | DOM |
|---|---------------------------|----------|---------------|-----------------|-------|------|----|-----|
| <a href="#">84-687 Ala Mahiku Street 124A</a> | <a href="#">\$282,000</a> | 2 & 1/0  | 815   \$346   | 1,222,729   \$0 | 120   | 68%  | 1  | 48  |

| Address                                       | Tax   Maint.   Ass. | Assessed Land | Assessed Building | Assessed Total | Ratio | Year & Remodeled |
|---|---------------------|---------------|-------------------|----------------|-------|------------------|
| <a href="#">84-687 Ala Mahiku Street 124A</a> | \$75   \$819   \$0  | \$48,400      | \$209,800         | \$258,200      | 109%  | 1975 & 1980      |

[84-687 Ala Mahiku Street 124A](#) - MLS#: [202407298](#) - Indulge in the allure of this charming 2-bedroom, 1-bathroom condo nestled in the heart of picturesque Makaha Valley. Discover spacious bedrooms complemented by an open-concept living area, complete with your very own private lanai. Floor-to-ceiling sliding glass doors invite abundant natural light, illuminating the space with warmth. Unwind by the sparkling pool or host gatherings at the BBQ and recreation areas. This gated community offers peace of mind with around-the-clock security and assigned parking stalls for your convenience. Don't overlook the chance to embrace a lifestyle of privacy and tranquility, enveloped by lush landscapes and embraced by the serene ambiance of Makaha Valley. **Region:** Leeward **Neighborhood:** Makaha **Condition:** Excellent **Parking:** Assigned, Open - 1 **Total Parking:** 1 **View:** Garden **Frontage:** Other **Pool:** **Zoning:** 12 - A-2 Medium Density Apartme **Sale Conditions:** Short Sale **Schools:** , , \* [Request Showing](#), [Photos](#), [History](#), [Maps](#), [Deed](#), [Watch List](#), [Tax Info](#)

DOM = Days on Market, Occ. = Occupancy, FL = Floor Number