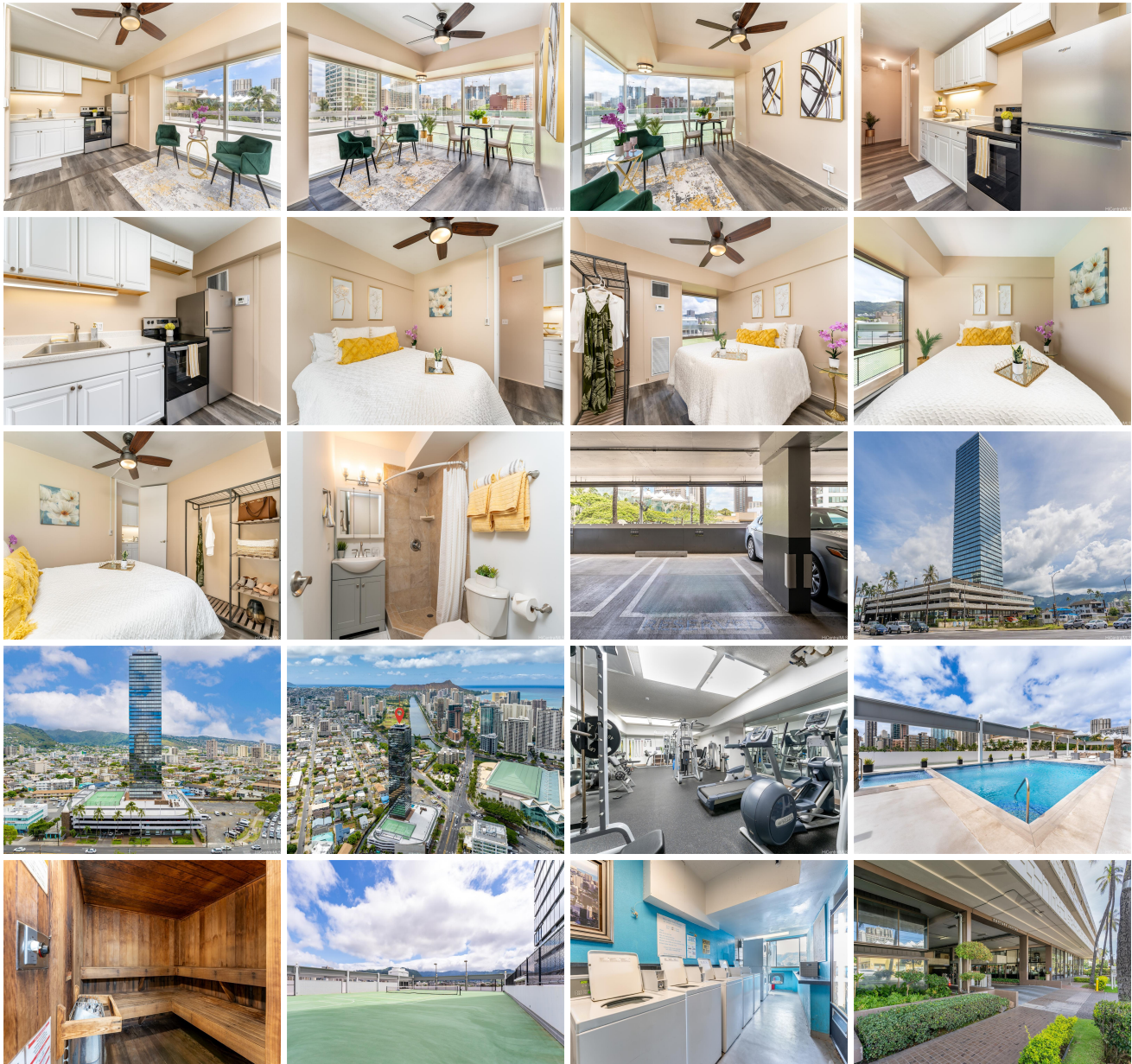


Century Center 1750 Kalakaua Avenue Unit 602, Honolulu 96826 * \$329,500

Beds: 1	MLS#: 202407327, FS	Year Built: 1978
Bath: 1/0	Status: Active	Remodeled: 2022
Living Sq. Ft.: 390	List Date & DOM: 06-27-2024 & 20	Total Parking: 1
Land Sq. Ft.: 0	Condition: Excellent, Above Average	Assessed Value
Lanai Sq. Ft.: 0	Frontage:	Building: \$230,700
Sq. Ft. Other: 0	Tax/Year: \$277/2024	Land: \$36,000
Total Sq. Ft. 390	Neighborhood: Mccully	Total: \$266,700
Maint./Assoc. \$563 / \$0	Flood Zone : Zone X - Tool	Stories / CPR: 21+ / No
Parking: Assigned, Covered - 1, Guest	Frontage:	
Zoning : 33 - BMX-3 Community Business M	View: City	

Public Remarks: Fee Simple! This rarely available 1 bed, 1 bath, 1 covered parking unit with stunning city views is located in the heart of Honolulu. The move-in ready newly updated end-unit is conveniently situated just minutes from Waikiki, Ala Moana Shopping Center, Kaka'ako, the beach, and a variety of restaurants. This iconic mirrored building offers a range of resort-like amenities, including a 24-hour front desk with security, men's and women's gyms with lockers, showers, and saunas, a conference and party room, and a large recreation deck with a jogging track, BBQ, pool, spa tub, and lighted tennis court. The pet-friendly building features a gated dog park on the first floor, a coin-operated laundry room on the 4th floor, and ample guest parking. Ideal for first-time homebuyers, investors seeking a prime property in paradise, and business owners with the building's unique BMX-3 (mixed use) zoning. Don't miss out on this rare opportunity! First Open House this Sunday 6/30 2-5pm! **Sale Conditions:** None **Schools:** , , * [Request Showing](#), [Photos](#), [History](#), [Maps](#), [Deed](#), [Watch List](#), [Tax Info](#)





Address	Price	Bd & Bth	Living / Avg.	Land Avg.	DOM
1750 Kalakaua Avenue 602	\$329,500	1 & 1/0	390 \$845	0 \$inf	20

Address	Tax Maint. Ass.	Assessed Land	Assessed Building	Assessed Total	Ratio	Year & Remodeled
1750 Kalakaua Avenue 602	\$277 \$563 \$0	\$36,000	\$230,700	\$266,700	124%	1978 & 2022

[1750 Kalakaua Avenue 602](#) - MLS#: [202407327](#) - Fee Simple! This rarely available 1 bed, 1 bath, 1 covered parking unit with stunning city views is located in the heart of Honolulu. The move-in ready newly updated end-unit is conveniently situated just minutes from Waikiki, Ala Moana Shopping Center, Kaka'ako, the beach, and a variety of restaurants. This iconic mirrored building offers a range of resort-like amenities, including a 24-hour front desk with security, men's and women's gyms with lockers, showers, and saunas, a conference and party room, and a large recreation deck with a jogging track, BBQ, pool, spa tub, and lighted tennis court. The pet-friendly building features a gated dog park on the first floor, a coin-operated laundry room on the 4th floor, and ample guest parking. Ideal for first-time homebuyers, investors seeking a prime property in paradise, and business owners with the building's unique BMX-3 (mixed use) zoning. Don't miss out on this rare opportunity! First Open House this Sunday 6/30 2-5pm! **Region:** Metro **Neighborhood:** Mccully **Condition:** Excellent, Above Average **Parking:** Assigned, Covered - 1, Guest **Total Parking:** 1 **View:** City **Frontage:** **Pool:** **Zoning:** 33 - BMX-3 Community Business M **Sale Conditions:** None **Schools:** , , * [Request Showing](#), [Photos](#), [History](#), [Maps](#), [Deed](#), [Watch List](#), [Tax Info](#)

DOM = Days on Market