

Kai Lani 92-1001 Aliinui Drive Unit 18C, Kapolei 96707 * Kai Lani * \$1,595,000

Beds: 2	MLS#: <u>202407361</u>, FS	Year Built: 2003
Bath: 2/0	Status: Active	Remodeled:
Living Sq. Ft.: 1,244	List Date & DOM: 05-20-2024 & 41	Total Parking: 2
Land Sq. Ft.: 0	Condition: Excellent	Assessed Value
Lanai Sq. Ft.: 78	Frontage: Preservation	Building: \$1,184,900
Sq. Ft. Other: 0	Tax/Year: \$344/2023	Land: \$135,500
Total Sq. Ft. 1,322	Neighborhood: Ko Olina	Total: \$1,320,400
Maint./Assoc. \$1,193 / \$0	Flood Zone : Zone D - Tool	Stories / CPR: Two / No

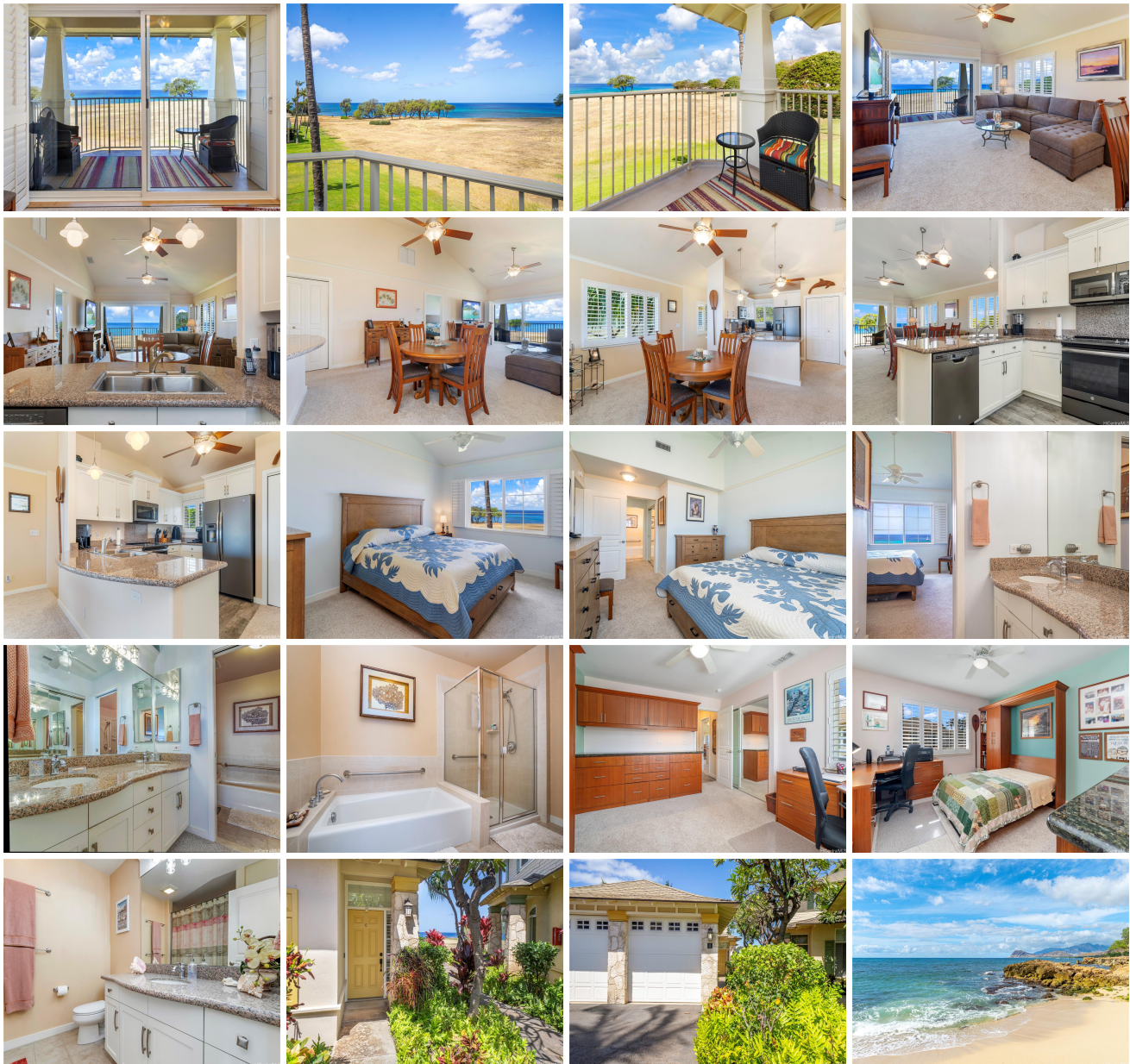
Parking: **Covered - 1, Compact, Garage, Open
- 1, Secured Entry, Street**

Frontage: **Preservation**

[Zoning](#): **11 - A-1 Low Density Apartment**

View: **Coastline, Garden, Ocean, Sunset**

Public Remarks: RARELY AVAILABLE PERIMETER OCEAN VIEW! You will fall in love with this beautiful & pristine 2 bed/2 bath/2 parking Kai Lani townhome. Fully furnished & turnkey w/central air-conditioning, plantation shutters, granite countertops, upgraded stainless steel appliances & newer carpet. The first bedroom has a spectacular ocean view, large walk-in closet, granite counter dual sinks, soaking tub + separate tiled shower; the second bedroom is a versatile office/guest room with ample built-in storage, desk + Murphy bed. Enjoy beautiful sunsets & whale & dolphin watching right from your lanai or take a relaxing stroll to the nearby private beach. Perfect as a full-time, holiday getaway or investment property (30-day minimum rentals allowed). Please click on the walk-through Matterport 3-D video link. **Sale Conditions:** None **Schools:** [Barbers Point](#), [Kapolei](#), [Kapolei](#) * [Request Showing](#), [Photos](#), [History](#), [Maps](#), [Deed](#), [Watch List](#), [Tax Info](#)





Address	Price	Bd & Bth	Living / Avg.	Land Avg.	Lanai	Occ.	FL	DOM
92-1001 Aliinui Drive 18C	\$1,595,000	2 & 2/0	1,244 \$1,282	0 \$inf	78	27%	2	41

Address	Tax Maint. Ass.	Assessed Land	Assessed Building	Assessed Total	Ratio	Year & Remodeled
92-1001 Aliinui Drive 18C	\$344 \$1,193 \$0	\$135,500	\$1,184,900	\$1,320,400	121%	2003 & NA

[92-1001 Aliinui Drive 18C](#) - MLS#: [202407361](#) - RARELY AVAILABLE PERIMETER OCEAN VIEW! You will fall in love with this beautiful & pristine 2 bed/2 bath/2 parking Kai Lani townhome. Fully furnished & turnkey w/central air-conditioning, plantation shutters, granite countertops, upgraded stainless steel appliances & newer carpet. The first bedroom has a spectacular ocean view, large walk-in closet, granite counter dual sinks, soaking tub + separate tiled shower; the second bedroom is a versatile office/guest room with ample built-in storage, desk + Murphy bed. Enjoy beautiful sunsets & whale & dolphin watching right from your lanai or take a relaxing stroll to the nearby private beach. Perfect as a full-time, holiday getaway or investment property (30-day minimum rentals allowed). Please click on the walk-through Matterport 3-D video link. **Region:** Ewa Plain **Neighborhood:** Ko Olina **Condition:** Excellent **Parking:** Covered - 1, Compact, Garage, Open - 1, Secured Entry, Street **Total Parking:** 2 **View:** Coastline, Garden, Ocean, Sunset **Frontage:** Preservation **Pool:** **Zoning:** 11 - A-1 Low Density Apartment **Sale Conditions:** None **Schools:** [Barbers Point](#), [Kapolei](#), [Kapolei](#) * [Request Showing](#), [Photos](#), [History](#), [Maps](#), [Deed](#), [Watch List](#), [Tax Info](#)

DOM = Days on Market, Occ. = Occupancy, FL = Floor Number