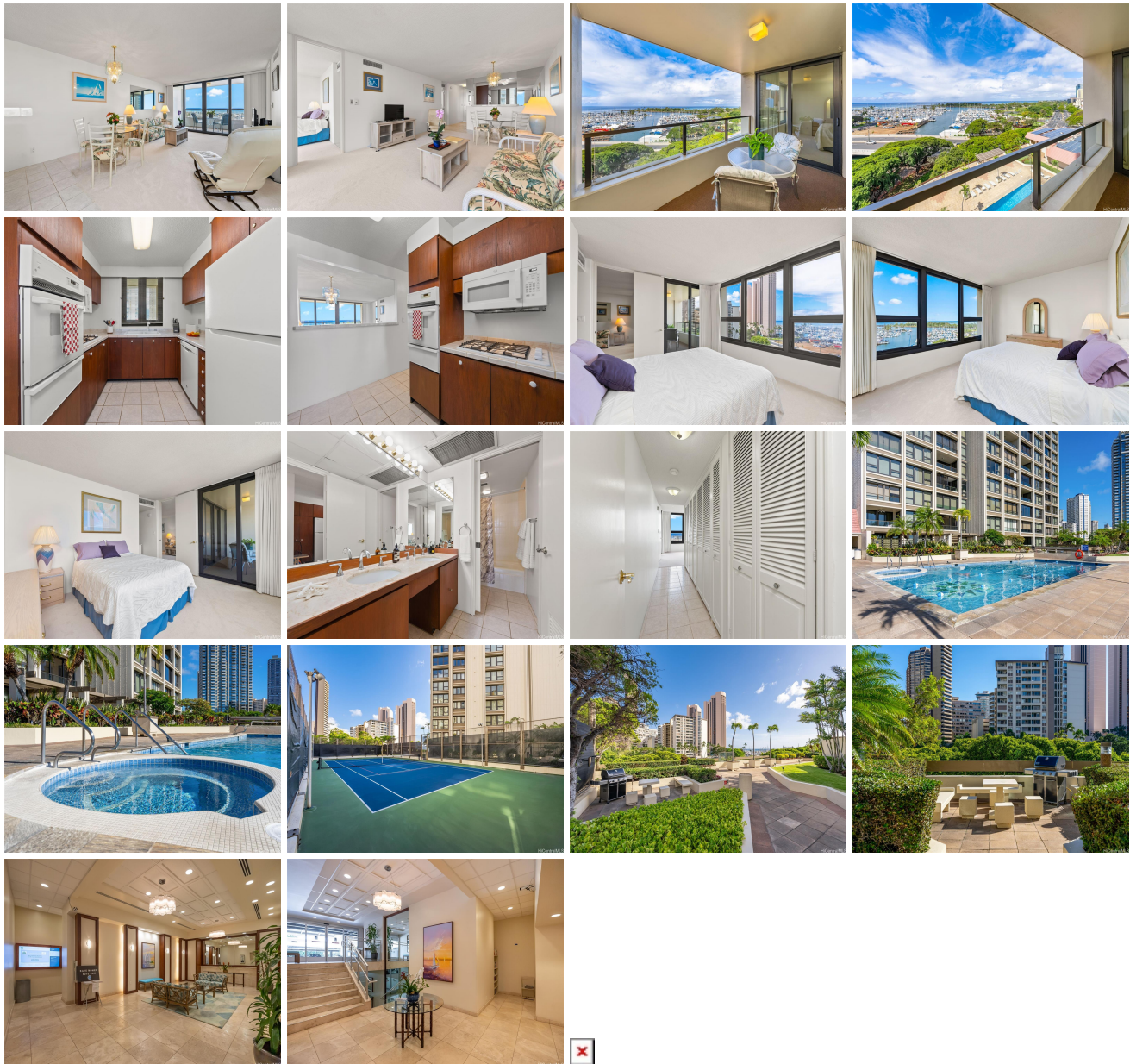


**Yacht Harbor Towers 1650 Ala Moana Boulevard Unit 1105, Honolulu 96815 \* Yacht Harbor Towers \* \$650,000 \* Originally \$668,000**

Beds: <b>1</b>	MLS#: <b><a href="#">202407391</a>, FS</b>	Year Built: <b>1973</b>
Bath: <b>1/0</b>	Status: <b>Active</b>	Remodeled:
Living Sq. Ft.: <b>842</b>	List Date & DOM: <b>04-01-2024 &amp; 107</b>	Total Parking: <b>1</b>
Land Sq. Ft.: <b>0</b>	Condition: <b>Excellent</b>	<a href="#">Assessed Value</a>
Lanai Sq. Ft.: <b>124</b>	Frontage:	Building: <b>\$631,000</b>
Sq. Ft. Other: <b>0</b>	Tax/Year: <b>\$195/2023</b>	Land: <b>\$39,200</b>
Total Sq. Ft. <b>966</b>	Neighborhood: <b>Ala Moana</b>	Total: <b>\$670,200</b>
Maint./Assoc. <b>\$907 / \$0</b>	<a href="#">Flood Zone</a> : <b>Zone AE - Tool</b>	Stories / CPR: <b>8-14 / No</b>
Parking: <b>Assigned, Covered - 1, Guest</b>	Frontage:	
<a href="#">Zoning</a> : <b>12 - A-2 Medium Density Apartme</b>	View: <b>Coastline, Marina/Canal, Ocean, Sunset</b>	

**Public Remarks:** Price reduced \$18,000! Offering exceptional value with new carpet, freshly painted, new blinds, plus numerous upgrades including AC replacement, updated appliances, hurricane sliders, and the popcorn ceiling has been removed. This floorplan with approximately 966 square feet (including lanai) has a kitchen window providing more light and cross ventilation when desired. Captivating views of the yacht harbor, ocean, and Ala Moana Park are framed by the tree lined Ala Wai Canal. Enjoy colorful sunsets from the spacious lanai, perfect for quiet relaxation. Furnishings available for purchase which provides an ideal turnkey opportunity. Please contact listing agent for inventory and pricing. Superbly located, this iconic building is expertly managed and beautifully maintained and features an array of amenities, swimming pool, whirlpool spa, tennis court, exercise equipment, on-site security, and guest parking. **Sale Conditions:** None **Schools:** , , \* [Request Showing, Photos, History, Maps, Deed, Watch List, Tax Info](#)



Address	Price	Bd & Bth	Living / Avg.	Land   Avg.	Lanai	Occ.	FL	DOM
<a href="#">1650 Ala Moana Boulevard 1105</a>	<b>\$650,000</b>	1 & 1/0	842   \$772	0   \$inf	124	56%	11	107

Address	Tax   Maint.   Ass.	Assessed Land	Assessed Building	Assessed Total	Ratio	Year & Remodeled
<a href="#">1650 Ala Moana Boulevard 1105</a>	\$195   \$907   \$0	\$39,200	\$631,000	\$670,200	97%	1973 & NA

[1650 Ala Moana Boulevard 1105](#) - MLS#: [202407391](#) - Original price was \$668,000 - Price reduced \$18,000! Offering exceptional value with new carpet, freshly painted, new blinds, plus numerous upgrades including AC replacement, updated appliances, hurricane sliders, and the popcorn ceiling has been removed. This floorplan with approximately 966 square feet (including lanai) has a kitchen window providing more light and cross ventilation when desired. Captivating views of the yacht harbor, ocean, and Ala Moana Park are framed by the tree lined Ala Wai Canal. Enjoy colorful sunsets from the spacious lanai, perfect for quiet relaxation. Furnishings available for purchase which provides an ideal turnkey opportunity. Please contact listing agent for inventory and pricing. Superbly located, this iconic building is expertly managed and beautifully maintained and features an array of amenities, swimming pool, whirlpool spa, tennis court, exercise equipment, on-site security, and guest parking. **Region:** Metro **Neighborhood:** Ala Moana **Condition:** Excellent **Parking:** Assigned, Covered - 1, Guest **Total Parking:** 1 **View:** Coastline, Marina/Canal, Ocean, Sunset **Frontage:** **Pool:** **Zoning:** 12 - A-2 Medium Density Apartme **Sale Conditions:** None **Schools:** , , \* [Request Showing](#), [Photos](#), [History](#), [Maps](#), [Deed](#), [Watch List](#), [Tax Info](#)

DOM = Days on Market, Occ. = Occupancy, FL = Floor Number