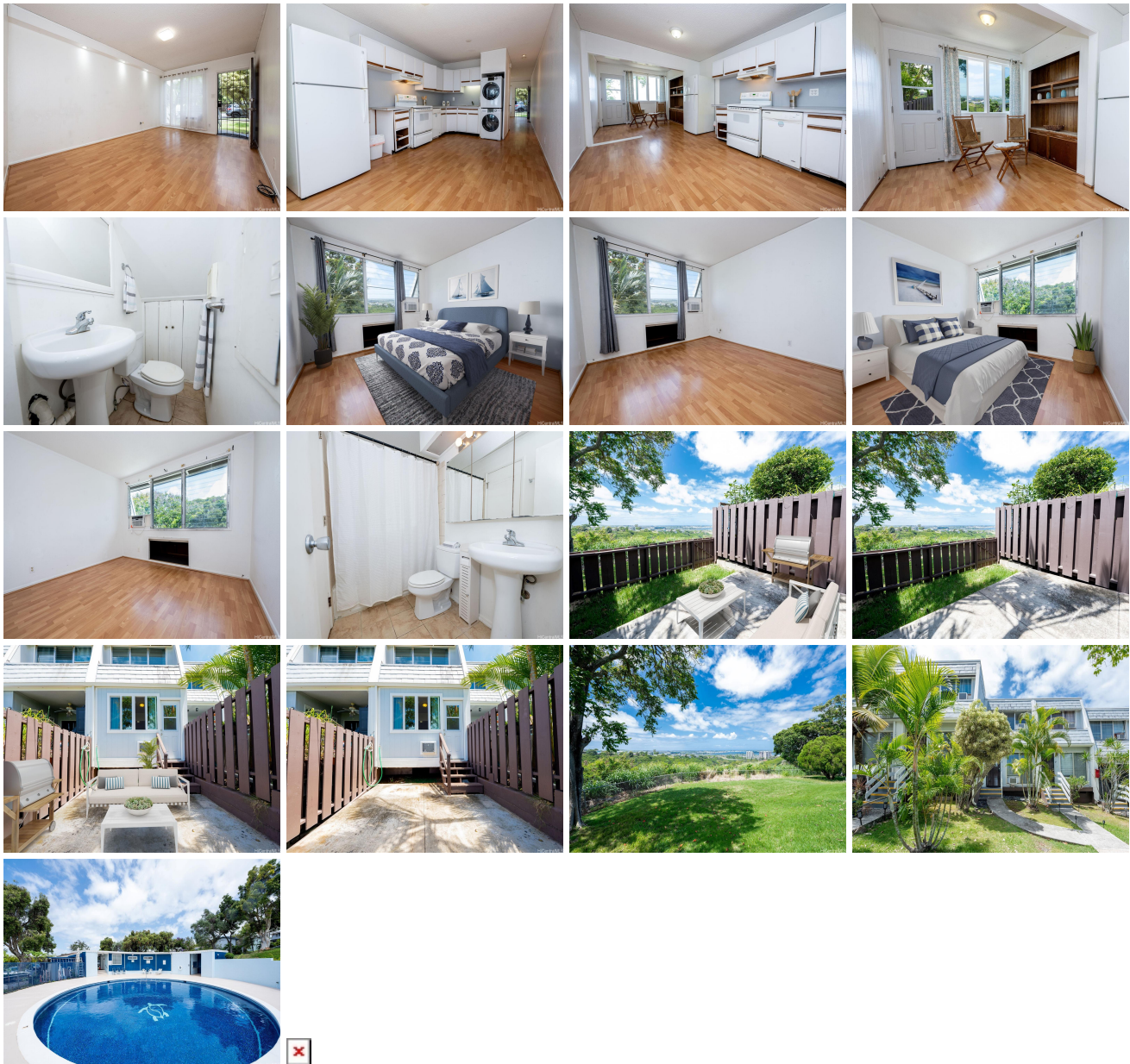


Ridgeway C 98-755 E Iho Place Unit 4, Aiea 96701 * Ridgeway C * \$480,000

Beds: 2	MLS#: 202407415, FS	Year Built: 1971
Bath: 1/1	Status: Active Under Contract	Remodeled:
Living Sq. Ft.: 977	List Date & DOM: 06-04-2024 & 10	Total Parking: 1
Land Sq. Ft.: 0	Condition: Average	Assessed Value
Lanai Sq. Ft.: 104	Frontage: Golf Course	Building: \$160,400
Sq. Ft. Other: 0	Tax/Year: \$146/2023	Land: \$340,700
Total Sq. Ft. 1,081	Neighborhood: Pearlridge	Total: \$576,600
Maint./Assoc. \$524 / \$0	Flood Zone : Zone D - Tool	Stories / CPR: Two / No
Parking: Assigned, Street	Frontage: Golf Course	
Zoning : 11 - A-1 Low Density Apartment	View: City, Ocean, Sunset	

Public Remarks: FIXER WITH A VIEW! Imagine barbecuing on a hot Saturday afternoon, from your fenced in backyard patio, enjoying gorgeous unobstructed Ocean, City and Pearl Harbor views. Even fabulous views from the dining area and upstairs primary bedroom. Do you have the vision to transform this unit into a spectacular fun living space? Even though it needs TLC, having an existing functional kitchen, bathrooms with newer washer/dryer is a great starting point. You may consider moving in and design your dream living space at your leisure. Please see the virtually enhanced photos along with the actual living area in its current condition. Located on a quiet, tree lined street in an attractive neighborhood by the golf course. Assigned designated parking stall is nearby the unit. **Sale Conditions:** None **Schools:** , , * [Request Showing](#), [Photos](#), [History](#), [Maps](#), [Deed](#), [Watch List](#), [Tax Info](#)



Address	Price	Bd & Bth	Living / Avg.	Land Avg.	Lanai	Occ.	FL	DOM
---------	-------	----------	---------------	-------------	-------	------	----	-----

98-755 E Iho Place 4	\$480,000	2 & 1/1	977 \$491	0 \$inf	104	73%	0	10
--------------------------------------	---------------------------	---------	-------------	-----------	-----	-----	---	----

Address	Tax Maint. Ass.	Assessed Land	Assessed Building	Assessed Total	Ratio	Year & Remodeled
98-755 E Iho Place 4	\$146 \$524 \$0	\$340,700	\$160,400	\$576,600	83%	1971 & NA

[98-755 E Iho Place 4](#) - MLS#: [202407415](#) - FIXER WITH A VIEW! Imagine barbecuing on a hot Saturday afternoon, from your fenced in backyard patio, enjoying gorgeous unobstructed Ocean, City and Pearl Harbor views. Even fabulous views from the dining area and upstairs primary bedroom. Do you have the vision to transform this unit into a spectacular fun living space? Even though it needs TLC, having an existing functional kitchen, bathrooms with newer washer/dryer is a great starting point. You may consider moving in and design your dream living space at your leisure. Please see the virtually enhanced photos along with the actual living area in its current condition. Located on a quiet, tree lined street in an attractive neighborhood by the golf course. Assigned designated parking stall is nearby the unit. **Region:** Pearl City **Neighborhood:** Pearlridge **Condition:** Average **Parking:** Assigned, Street **Total Parking:** 1 **View:** City, Ocean, Sunset **Frontage:** Golf Course **Pool:** **Zoning:** 11 - A-1 Low Density Apartment **Sale Conditions:** None **Schools:** , , * [Request Showing](#), [Photos](#), [History](#), [Maps](#), [Deed](#), [Watch List](#), [Tax Info](#)

DOM = Days on Market, Occ. = Occupancy, FL = Floor Number