

**Sky Ala Moana West 1388 Kapiolani Boulevard Unit 3702, Honolulu 96814 \* Sky Ala Moana**

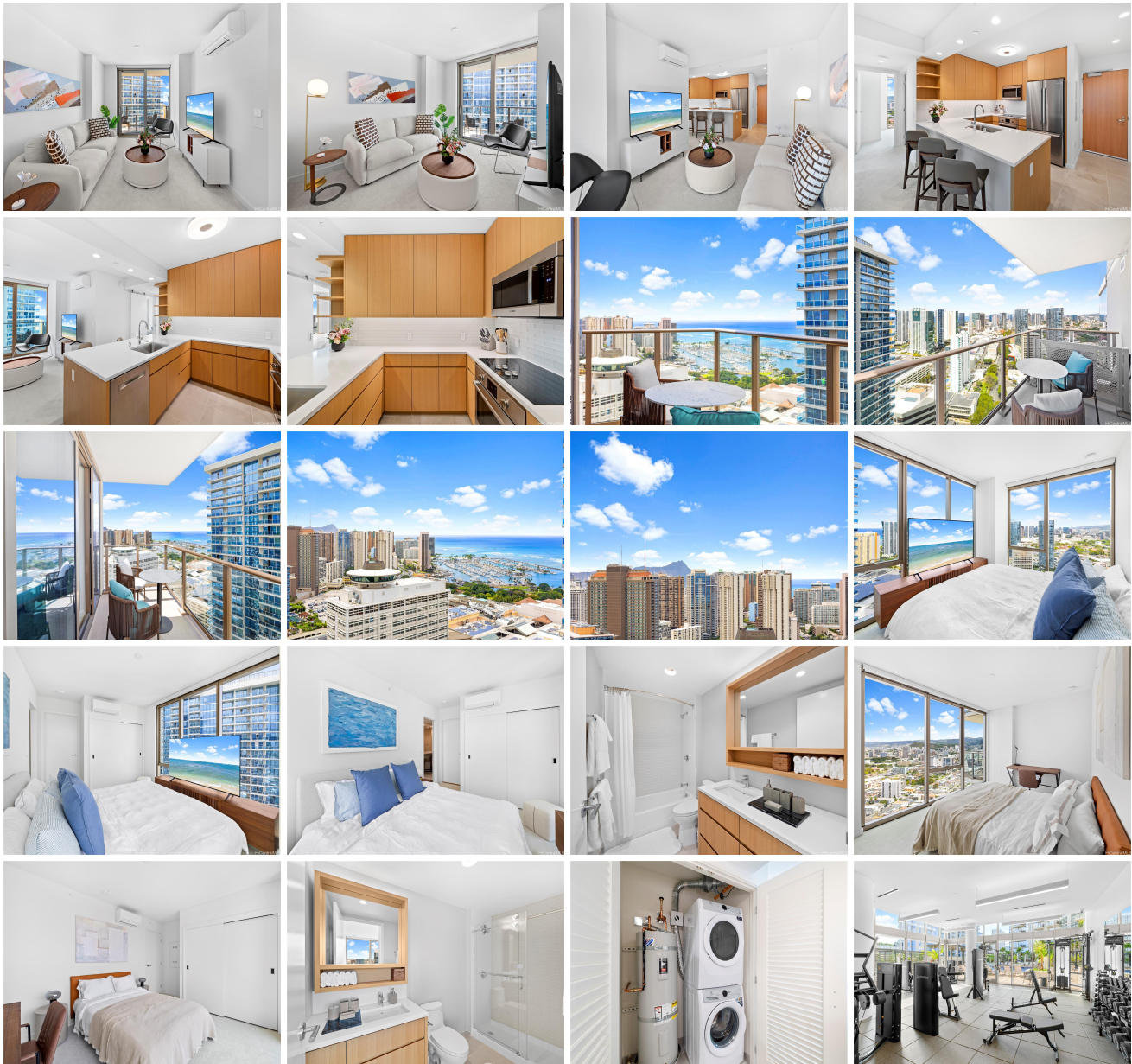
**West \* \$1,150,000 \* Originally \$1,200,000**

Beds: <b>2</b>	MLS#: <b>202407481, FS</b>	Year Built: <b>2023</b>
Bath: <b>2/0</b>	Status: <b>Active</b>	Remodeled:
Living Sq. Ft.: <b>822</b>	List Date & DOM: <b>04-02-2024 &amp; 89</b>	Total Parking: <b>2</b>
Land Sq. Ft.: <b>0</b>	Condition: <b>Excellent</b>	<a href="#">Assessed Value</a>
Lanai Sq. Ft.: <b>91</b>	Frontage:	Building: <b>\$990,700</b>
Sq. Ft. Other: <b>0</b>	Tax/Year: <b>\$306/2024</b>	Land: <b>\$56,400</b>
Total Sq. Ft. <b>913</b>	Neighborhood: <b>Holiday Mart</b>	Total: <b>\$1,047,100</b>
Maint./Assoc. <b>\$1,079 / \$0</b>	<a href="#">Flood Zone</a> : <b>Zone X - Tool</b>	Stories / CPR: <b>21+ / No</b>
Parking: <b>Covered - 1, Garage, Guest, Secured Entry</b>	Frontage:	

**Zoning: 33 - BMX-3 Community Business M**

**View: City, Diamond Head, Mountain, Ocean, Sunset**

**Public Remarks:** Wonderful opportunity to own a brand new, fully furnished and highly desirable Sky Ala Moana West. High floor 2 bedroom, 2 bathroom unit with amazing views of the ocean and the city. Located in the center of Ala Moana area and conveniently located near Ala Moana Center and Ala Moana Beach Park. Enjoy your luxury amenities in the building which features a pool & whirlpool spa, private dining rooms, playground, cabanas, BBQ area, fitness areas and more! Unit features upgraded stainless steel appliances. 2 covered garage parking stalls which includes storage locker. **Sale Conditions:** None  
**Schools:** [Kaahumanu](#), [Stevenson](#), [Mckinley](#) \* [Request Showing](#), [Photos](#), [History](#), [Maps](#), [Deed](#), [Watch List](#), [Tax Info](#)





Address	Price	Bd & Bth	Living / Avg.	Land   Avg.	Lanai	Occ.	FL	DOM
<a href="#">1388 Kapiolani Boulevard 3702</a>	<b>\$1,150,000</b>	2 & 2/0	822   \$1,399	0   \$inf	91	50%	37	89

Address	Tax   Maint.   Ass.	Assessed Land	Assessed Building	Assessed Total	Ratio	Year & Remodeled
<a href="#">1388 Kapiolani Boulevard 3702</a>	\$306   \$1,079   \$0	\$56,400	\$990,700	\$1,047,100	110%	2023 & NA

[1388 Kapiolani Boulevard 3702](#) - MLS#: [202407481](#) - Original price was \$1,200,000 - Wonderful opportunity to own a brand new, fully furnished and highly desirable Sky Ala Moana West. High floor 2 bedroom, 2 bathroom unit with amazing views of the ocean and the city. Located in the center of Ala Moana area and conveniently located near Ala Moana Center and Ala Moana Beach Park. Enjoy your luxury amenities in the building which features a pool & whirlpool spa, private dining rooms, playground, cabanas, BBQ area, fitness areas and more! Unit features upgraded stainless steel appliances. 2 covered garage parking stalls which includes storage locker. **Region:** Metro **Neighborhood:** Holiday Mart **Condition:** Excellent **Parking:** Covered - 1, Garage, Guest, Secured Entry **Total Parking:** 2 **View:** City, Diamond Head, Mountain, Ocean, Sunset **Frontage:** Pool: **Zoning:** 33 - BMX-3 Community Business M **Sale Conditions:** None **Schools:** [Kaahumanu](#), [Stevenson](#), [Mckinley](#) \* [Request Showing](#), [Photos](#), [History](#), [Maps](#), [Deed](#), [Watch List](#), [Tax Info](#)

DOM = Days on Market, Occ. = Occupancy, FL = Floor Number