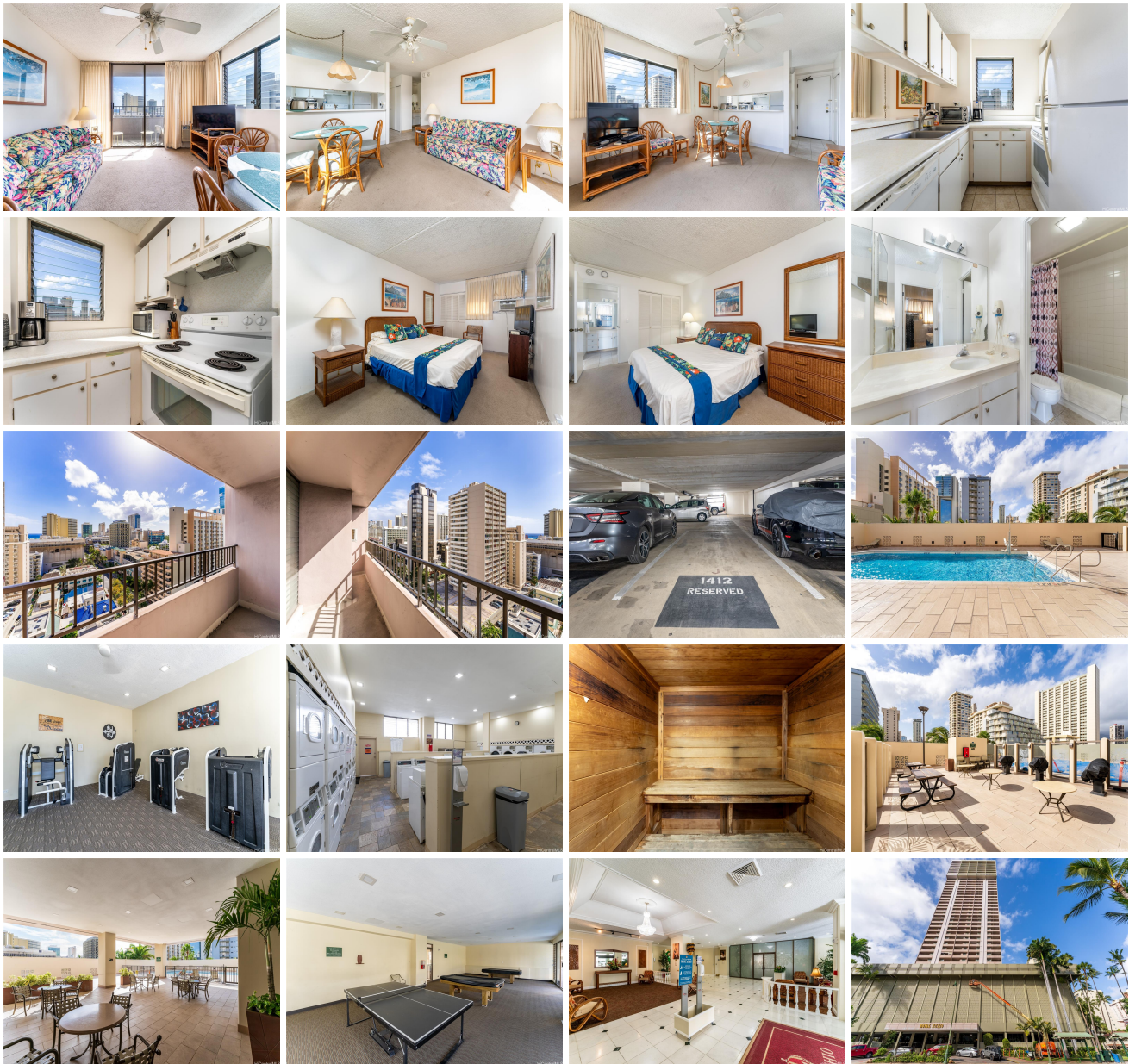


Royal Kuhio 2240 Kuhio Avenue Unit 1412, Honolulu 96815 * \$188,000

Beds: 1	MLS#: 202407548, LH	Year Built: 1976
Bath: 1/0	Status: Active	Remodeled:
Living Sq. Ft.: 538	List Date & DOM: 04-12-2024 & 76	Total Parking: 1
Land Sq. Ft.: 0	Condition: Average	Assessed Value
Lanai Sq. Ft.: 76	Frontage:	Building: \$416,100
Sq. Ft. Other: 0	Tax/Year: \$123/2024	Land: \$41,000
Total Sq. Ft. 614	Neighborhood: Waikiki	Total: \$457,100
Maint./Assoc. \$999 / \$0	Flood Zone : Zone AO - Tool	Stories / CPR: / No
Parking: Assigned, Covered - 1, Secured Entry, Street	Frontage:	
Zoning : X2 - Apartment Precinct	View: City, Mountain, Ocean	

Public Remarks: Enjoy city, mountain and ocean views from this 1 bdrm/1 bath/1 covered pkg CORNER/END unit in Royal Kuhio. Situated in the heart of Waikiki, this unit features an extra window for more natural light, a spacious bedroom and a lanai where you can relax and soak in the views. Enjoy amazing amenities such as a pool, exercise room, BBQ area, recreation room, security and more! Located near world-renown Waikiki Beach and an abundance of shopping, restaurants and entertainment. A must see! **Sale Conditions:** None **Schools:** [Jefferson](#), [Washington](#), [Kaimuki](#) * [Request Showing](#), [Photos](#), [History](#), [Maps](#), [Deed](#), [Watch List](#), [Tax Info](#)



Address	Price	Bd & Bth	Living / Avg.	Land Avg.	DOM
2240 Kuhio Avenue 1412	\$188,000 LH	1 & 1/0	538 \$349	0 \$inf	76

Address	Tax Maint. Ass.	Assessed Land	Assessed Building	Assessed Total	Ratio	Year & Remodeled
2240 Kuhio Avenue 1412	\$123 \$999 \$0	\$41,000	\$416,100	\$457,100	41%	1976 & NA

[2240 Kuhio Avenue 1412](#) - MLS#: [202407548](#) - Enjoy city, mountain and ocean views from this 1 bdrm/1 bath/1 covered pkg CORNER/END unit in Royal Kuhio. Situated in the heart of Waikiki, this unit features an extra window for more natural light, a spacious bedroom and a lanai where you can relax and soak in the views. Enjoy amazing amenities such as a pool, exercise room, BBQ area, recreation room, security and more! Located near world-renown Waikiki Beach and an abundance of shopping, restaurants and entertainment. A must see! **Region:** Metro **Neighborhood:** Waikiki **Condition:** Average **Parking:** Assigned, Covered - 1, Secured Entry, Street **Total Parking:** 1 **View:** City, Mountain, Ocean **Frontage:** **Pool:** **Zoning:** X2 - Apartment Precinct **Sale Conditions:** None **Schools:** [Jefferson](#), [Washington](#), [Kaimuki](#) * [Request Showing](#), [Photos](#), [History](#), [Maps](#), [Deed](#), [Watch List](#), [Tax Info](#)

DOM = Days on Market