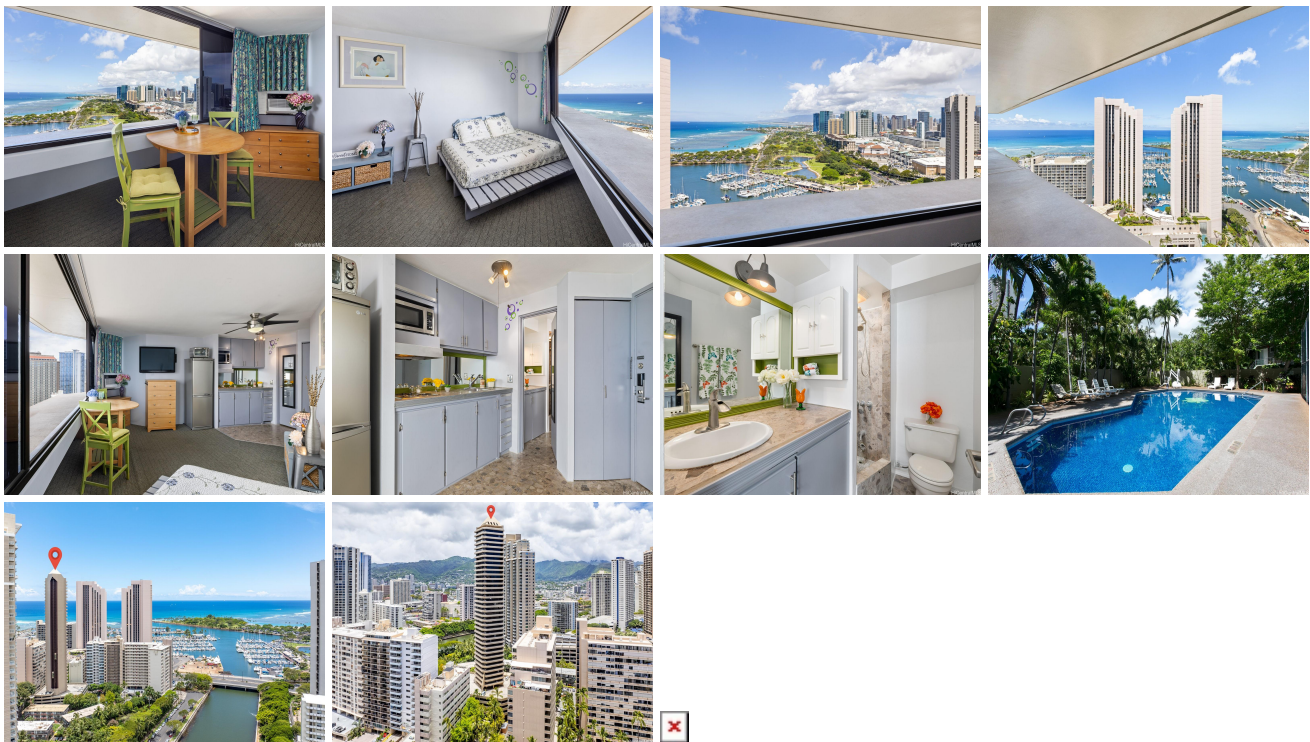


Waikiki Marina Condominium 1700 Ala Moana Boulevard Unit 3401, Honolulu 96815 *

\$340,000

Beds: 0	MLS#: 202407569, FS	Year Built: 1984
Bath: 1/0	Status: Active	Remodeled:
Living Sq. Ft.: 365	List Date & DOM: 05-10-2024 & 64	Total Parking: 1
Land Sq. Ft.: 38,768	Condition: Above Average	Assessed Value
Lanai Sq. Ft.: 0	Frontage: Other	Building: \$164,600
Sq. Ft. Other: 0	Tax/Year: \$84/2024	Land: \$86,600
Total Sq. Ft. 365	Neighborhood: Waikiki	Total: \$251,200
Maint./Assoc. \$1,000 / \$0	Flood Zone : Zone AE - Tool	Stories / CPR: 21+ / No
Parking: Assigned, Covered - 1	Frontage: Other	
Zoning : X2 - Apartment Precinct	View: Coastline, Ocean, Sunset	

Public Remarks: A focal point of this cozy studio is sweeping ocean views spanning from the Waikiki Marina, Ala Moana Beach Park, Kakaako and the Waianae Mountain Range from its large picture windows. The kitchenette includes everything you need for comfortable studio living including a full size refrigerator, cooktop and microwave. Condo amenities includes a swimming pool, jacuzzi, outdoor dining area with a BBQ and a tennis court. **Sale Conditions:** None **Schools:** , , * [Request Showing](#), [Photos](#), [History](#), [Maps](#), [Deed](#), [Watch List](#), [Tax Info](#)



Address	Price	Bd & Bth	Living / Avg.	Land Avg.	DOM
1700 Ala Moana Boulevard 3401	\$340,000	0 & 1/0	365 \$932	38,768 \$9	64

Address	Tax Maint. Ass.	Assessed Land	Assessed Building	Assessed Total	Ratio	Year & Remodeled
1700 Ala Moana Boulevard 3401	\$84 \$1,000 \$0	\$86,600	\$164,600	\$251,200	135%	1984 & NA

[1700 Ala Moana Boulevard 3401](#) - MLS#: [202407569](#) - A focal point of this cozy studio is sweeping ocean views spanning from the Waikiki Marina, Ala Moana Beach Park, Kakaako and the Waianae Mountain Range from its large picture windows. The kitchenette includes everything you need for comfortable studio living including a full size refrigerator, cooktop and microwave. Condo amenities includes a swimming pool, jacuzzi, outdoor dining area with a BBQ and a tennis court. **Region:** Metro **Neighborhood:** Waikiki **Condition:** Above Average **Parking:** Assigned, Covered - 1 **Total Parking:** 1 **View:** Coastline, Ocean, Sunset **Frontage:** Other **Pool:** **Zoning:** X2 - Apartment Precinct **Sale Conditions:** None **Schools:** , , * [Request Showing](#), [Photos](#), [History](#), [Maps](#), [Deed](#), [Watch List](#), [Tax Info](#)

DOM = Days on Market