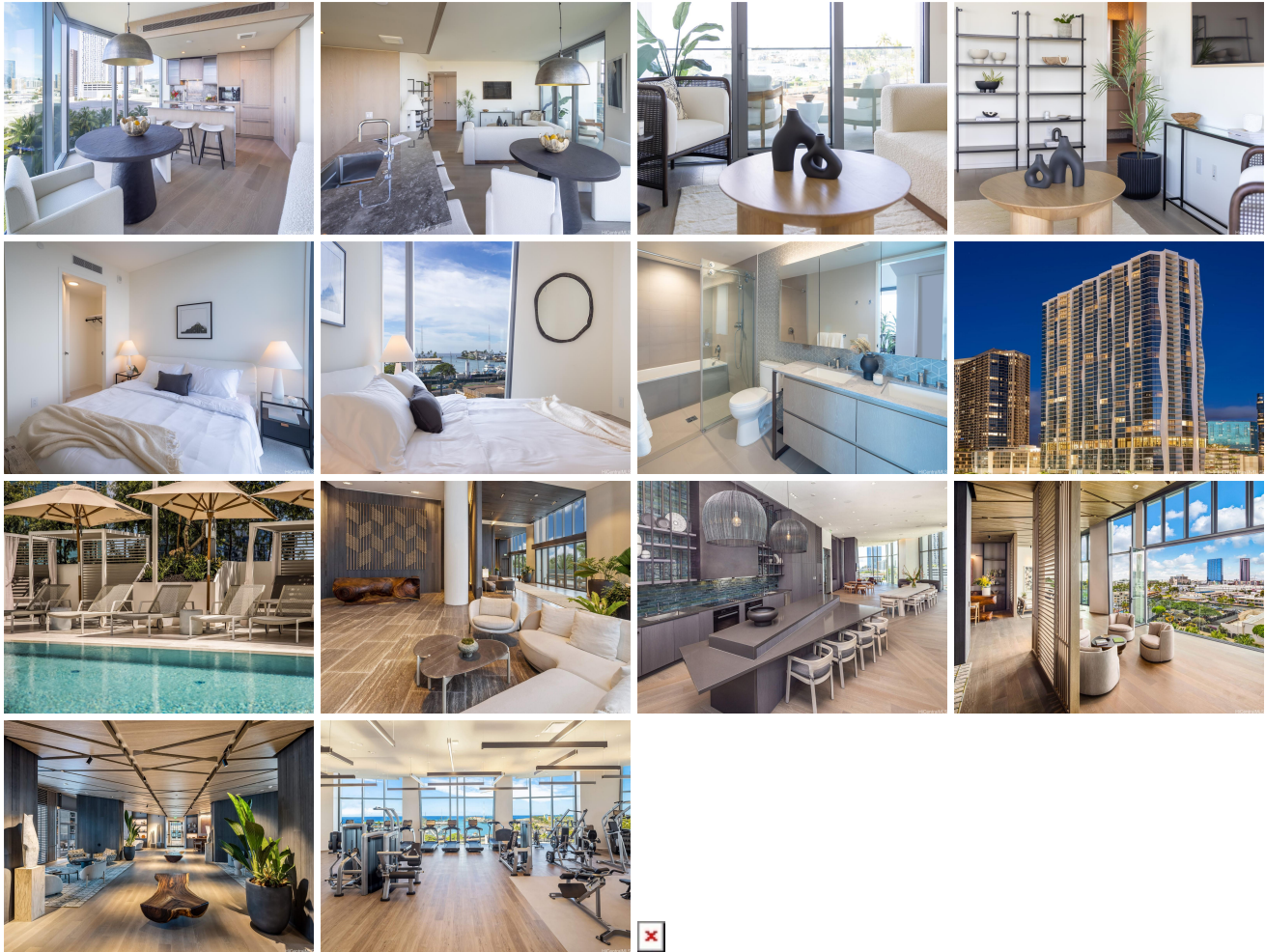


Koula 1000 Auahi Street Unit 501, Honolulu 96814 * \$1,300,000

Beds: 1	MLS#: 202407599, FS	Year Built: 2021
Bath: 1/0	Status: Active	Remodeled:
Living Sq. Ft.: 739	List Date & DOM: 04-08-2024 & 98	Total Parking: 1
Land Sq. Ft.: 0	Condition: Excellent	Assessed Value
Lanai Sq. Ft.: 94	Frontage:	Building: \$956,400
Sq. Ft. Other: 0	Tax/Year: \$686/2023	Land: \$34,600
Total Sq. Ft. 833	Neighborhood: Kakaako	Total: \$991,000
Maint./Assoc. \$975 / \$0	Flood Zone : Zone AE - Tool	Stories / CPR: / No
Parking: Assigned, Covered - 1, Guest, Secured Entry	Frontage:	
Zoning : Kak - Kakaako Community Development Project	View: City, Coastline, Garden, Marina/Canal, Ocean	

Public Remarks: Welcome home to this beautiful end unit in Howard Hughes' stunning new development in Ward Village. Perched on the front of the building, this expansive one-bedroom unit features unobstructed ocean views through the NEW lush green Victoria Ward Park. This premier 01 stack of units, features "Front Row Views for Second Row Pricing!" Designed by award-winning Studio Gang Architects and with interiors by Yabu Pushelberg, Ko'ula captures the essence of island living with an emphasis on a modern and leisurely lifestyle. Enjoy the luxury amenities of Ko'ula, including an on-site resident manager, open-air lobby, fitness center, children's play area, lap pool, grand dining room, BBQ pavilions, pool cabanas...and more! **Sale Conditions:** None **Schools:** , , * [Request Showing](#), [Photos](#), [History](#), [Maps](#), [Deed](#), [Watch List](#), [Tax Info](#)



Address	Price	Bd & Bth	Living / Avg.	Land Avg.	DOM
1000 Auahi Street 501	\$1,300,000	1 & 1/0	739 \$1,759	0 \$inf	98

Address	Tax Maint. Ass.	Assessed Land	Assessed Building	Assessed Total	Ratio	Year & Remodeled
1000 Auahi Street 501	\$686 \$975 \$0	\$34,600	\$956,400	\$991,000	131%	2021 & NA

[1000 Auahi Street 501](#) - MLS#: [202407599](#) - Welcome home to this beautiful end unit in Howard Hughes' stunning new development in Ward Village. Perched on the front of the building, this expansive one-bedroom unit features unobstructed ocean views through the NEW lush green Victoria Ward Park. This premier 01 stack of units, features "Front Row Views for Second Row Pricing!" Designed by award-winning Studio Gang Architects and with interiors by Yabu Pushelberg, Ko'ula captures the essence of island living with an emphasis on a modern and leisurely lifestyle. Enjoy the luxury amenities of Ko'ula, including an on-site resident manager, open-air lobby, fitness center, children's play area, lap pool, grand dining room, BBQ pavilions, pool cabanas...and more! **Region:** Metro **Neighborhood:** Kakaako **Condition:** Excellent **Parking:** Assigned, Covered - 1, Guest, Secured Entry **Total Parking:** 1 **View:** City, Coastline, Garden, Marina/Canal, Ocean **Frontage:** **Pool:** **Zoning:** Kak - Kakaako Community Development Project **Sale Conditions:** None **Schools:** , , * [Request Showing](#), [Photos](#), [History](#), [Maps](#), [Deed](#), [Watch List](#), [Tax Info](#)

DOM = Days on Market