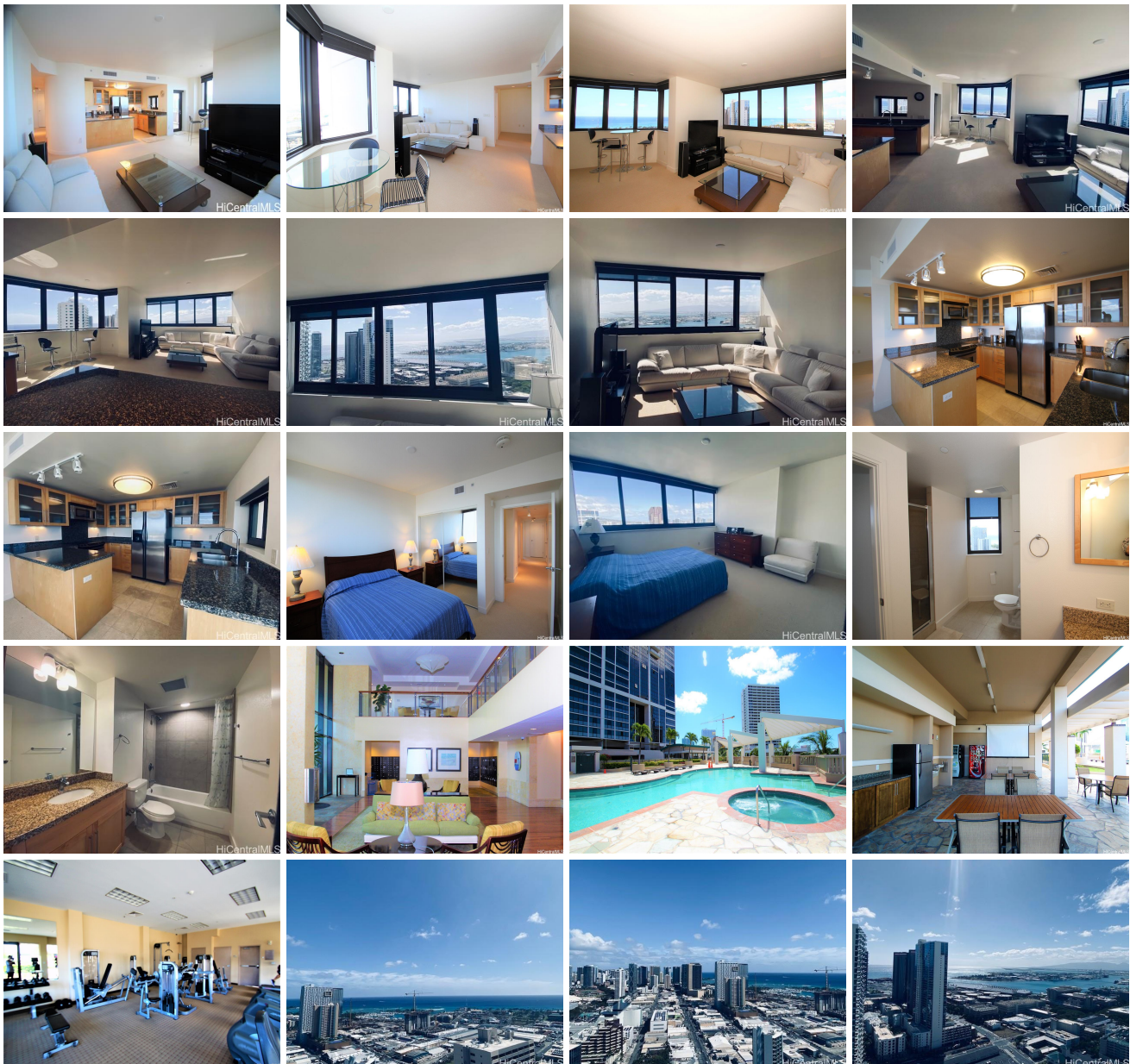


**Keola Lai 600 Queen Street Unit 3509, Honolulu 96813 \* Keola Lai \* \$1,300,000**

Beds: <b>3</b>	MLS#: <b>202407660, FS</b>	Year Built: <b>2008</b>
Bath: <b>2/0</b>	Status: <b>Active</b>	Remodeled:
Living Sq. Ft.: <b>1,402</b>	List Date & DOM: <b>04-04-2024 &amp; 104</b>	Total Parking: <b>2</b>
Land Sq. Ft.: <b>0</b>	Condition: <b>Excellent</b>	<a href="#">Assessed Value</a>
Lanai Sq. Ft.: <b>96</b>	Frontage: <b>Other</b>	Building: <b>\$1,041,000</b>
Sq. Ft. Other: <b>0</b>	Tax/Year: <b>\$485/2023</b>	Land: <b>\$118,100</b>
Total Sq. Ft. <b>1,498</b>	Neighborhood: <b>Kakaako</b>	Total: <b>\$1,159,100</b>
Maint./Assoc. <b>\$1,467 / \$0</b>	<a href="#">Flood Zone</a> : <b>Zone X - Tool</b>	Stories / CPR: <b>21+ / No</b>
Parking: <b>Covered - 2, Guest</b>	Frontage: <b>Other</b>	
<a href="#">Zoning</a> : <b>Kak - Kakaako Community Development Project</b>	View: <b>Coastline, Diamond Head, Mountain, Sunrise, Sunset</b>	

**Public Remarks:** " Spectacular panoramic ocean, harbor, city & mountain views from this beautiful wrap-around end-residence. Spacious High 8'6" ceilings floorplan with over 1,400 sq.ft. of living area in this price range. Quality granite countertops, solid wood cabinetry and stainless steel appliances. Great amenities with Fitness Center, Pool, Jacuzzi, BBQ. Move in condition, sold AS-IS. Convenient full size side-by-side parking stalls and 23 guest parking stalls!.Pet-friendly too.  
**Sale Conditions:** None **Schools:** , , \* [Request Showing](#), [Photos](#), [History](#), [Maps](#), [Deed](#), [Watch List](#), [Tax Info](#)





Address	Price	Bd & Bth	Living / Avg.	Land   Avg.	Lanai	Occ.	FL	DOM
<a href="#">600 Queen Street 3509</a>	<a href="#">\$1,300,000</a>	3 & 2/0	1,402   \$927	0   \$inf	96	78%	35	104

Address	Tax   Maint.   Ass.	Assessed Land	Assessed Building	Assessed Total	Ratio	Year & Remodeled
<a href="#">600 Queen Street 3509</a>	\$485   \$1,467   \$0	\$118,100	\$1,041,000	\$1,159,100	112%	2008 & NA

[600 Queen Street 3509](#) - MLS#: [202407660](#) - " Spectacular panoramic ocean, harbor, city & mountain views from this beautiful wrap-around end-residence. Spacious High 8'6" ceilings floorplan with over 1,400 sq.ft. of living area in this price range. Quality granite countertops, solid wood cabinetry and stainless steel appliances. Great amenities with Fitness Center, Pool, Jacuzzi, BBQ. Move in condition, sold AS-IS. Convenient full size side-by-side parking stalls and 23 guest parking stalls!.Pet-friendly too. **Region:** Metro **Neighborhood:** Kakaako **Condition:** Excellent **Parking:** Covered - 2, Guest **Total Parking:** 2 **View:** Coastline, Diamond Head, Mountain, Sunrise, Sunset **Frontage:** Other **Pool:** **Zoning:** Kak - Kakaako Community Development Project **Sale Conditions:** None **Schools:** , , \* [Request Showing](#), [Photos](#), [History](#), [Maps](#), [Deed](#), [Watch List](#), [Tax Info](#)

DOM = Days on Market, Occ. = Occupancy, FL = Floor Number