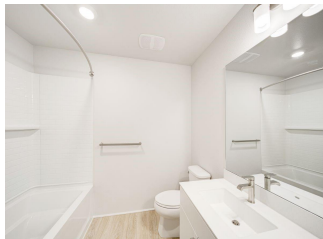
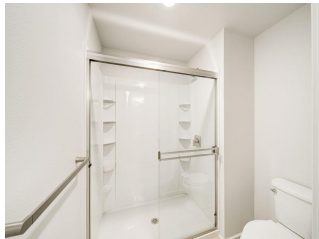
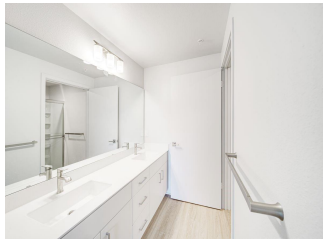
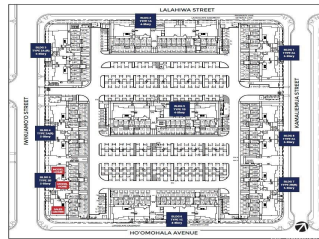


Nahele at Hoopili 91-3641 IWIKUAMOO Street Unit 9203, Ewa Beach 96706 * Nahele at

Hoopili * \$528,665

Beds: 2	MLS#: 202407730, FS	Year Built: 2024
Bath: 2/0	Status: Active	Remodeled:
Living Sq. Ft.: 867	List Date & DOM: 04-05-2024 & 82	Total Parking: 1
Land Sq. Ft.: 0	Condition: Excellent	Assessed Value
Lanai Sq. Ft.: 0	Frontage: Other	Building: \$0
Sq. Ft. Other: 0	Tax/Year: \$0/0	Land: \$0
Total Sq. Ft. 867	Neighborhood: Hoopili-nahele	Total: \$0
Maint./Assoc. \$347 / \$78	Flood Zone : Zone D - Tool	Stories / CPR: 4-7 / No
Parking: Assigned, Open - 1	Frontage: Other	
Zoning : 17 - AMX-2 Medium Density Apt M	View: Other	

Public Remarks: This single-level 2 bedroom, 2-bath condominium with 867 square feet (net) allows for comfortable living. This floor plan offers an open-concept living room. From the living room, step out to the covered lanai to relax and take in the fresh air. The main bedroom has a walk-in closet and ensuite bathroom with a double vanity and shower. The second bedroom has a generously sized closet with mirrored wardrobe doors and the second bathroom features a full-size bathtub. Air conditioning and modern appliances including a range/oven, micro-hood, dishwasher, refrigerator, and washer/dryer allow for ease of living. Home Is Connected® - Smart Home system+ and includes energy efficient features*. Community complete with a pool, parks, a dog park, and more! **Sale Conditions:** None **Schools:** [Ewa](#), [Honouliuli](#), [Kapolei](#) * [Request Showing](#), [Photos](#), [History](#), [Maps](#), [Deed](#), [Watch List](#), [Tax Info](#)





Address	Price	Bd & Bth	Living / Avg.	Land Avg.	Lanai	Occ.	FL	DOM
91-3641 IWIKUAMOO Street 9203	\$528,665	2 & 2/0	867 \$610	0 \$inf	0	84%	2	82

Address	Tax Maint. Ass.	Assessed Land	Assessed Building	Assessed Total	Ratio	Year & Remodeled
91-3641 IWIKUAMOO Street 9203	\$0 \$347 \$78	\$0	\$0	\$0	inf%	2024 & NA

[91-3641 IWIKUAMOO Street 9203](#) - MLS#: [202407730](#) - This single-level 2 bedroom, 2-bath condominium with 867 square feet (net) allows for comfortable living. This floor plan offers an open-concept living room. From the living room, step out to the covered lanai to relax and take in the fresh air. The main bedroom has a walk-in closet and ensuite bathroom with a double vanity and shower. The second bedroom has a generously sized closet with mirrored wardrobe doors and the second bathroom features a full-size bathtub. Air conditioning and modern appliances including a range/oven, micro-hood, dishwasher, refrigerator, and washer/dryer allow for ease of living. Home Is Connected® - Smart Home system+ and includes energy efficient features*. Community complete with a pool, parks, a dog park, and more! **Region:** Ewa Plain **Neighborhood:** Hoopili-nahele **Condition:** Excellent **Parking:** Assigned, Open - 1 **Total Parking:** 1 **View:** Other **Frontage:** Other **Pool:** Zoning: 17 - AMX-2 Medium Density Apt M **Sale Conditions:** None **Schools:** [Ewa](#), [Honouliuli](#), [Kapolei](#) * [Request Showing](#), [Photos](#), [History](#), [Maps](#), [Deed](#), [Watch List](#), [Tax Info](#)

DOM = Days on Market, Occ. = Occupancy, FL = Floor Number