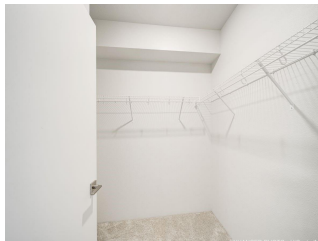
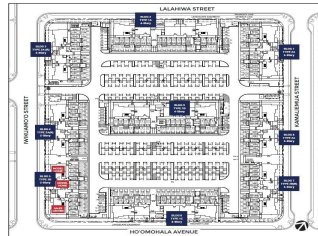


**Nahele at Hoopili 91-3641 IWIKUAMOO Street Unit 9203, Ewa Beach 96706 \* \$528,665**

Beds: <b>2</b>	MLS#: <b>202407730, FS</b>	Year Built: <b>2024</b>
Bath: <b>2/0</b>	Status: <b>Active</b>	Remodeled:
Living Sq. Ft.: <b>867</b>	List Date & DOM: <b>04-05-2024 &amp; 83</b>	Total Parking: <b>1</b>
Land Sq. Ft.: <b>0</b>	Condition: <b>Excellent</b>	<a href="#">Assessed Value</a>
Lanai Sq. Ft.: <b>0</b>	Frontage: <b>Other</b>	Building: <b>\$0</b>
Sq. Ft. Other: <b>0</b>	Tax/Year: <b>\$0/0</b>	Land: <b>\$0</b>
Total Sq. Ft. <b>867</b>	Neighborhood: <b>Hoopili-nahele</b>	Total: <b>\$0</b>
Maint./Assoc. <b>\$347 / \$78</b>	<a href="#">Flood Zone</a> : <b>Zone D - Tool</b>	Stories / CPR: <b>4-7 / No</b>
Parking: <b>Assigned, Open - 1</b>	Frontage: <b>Other</b>	
<a href="#">Zoning</a> : <b>17 - AMX-2 Medium Density Apt M</b>	View: <b>Other</b>	

**Public Remarks:** This single-level 2 bedroom, 2-bath condominium with 867 square feet (net) allows for comfortable living. This floor plan offers an open-concept living room. From the living room, step out to the covered lanai to relax and take in the fresh air. The main bedroom has a walk-in closet and ensuite bathroom with a double vanity and shower. The second bedroom has a generously sized closet with mirrored wardrobe doors and the second bathroom features a full-size bathtub. Air conditioning and modern appliances including a range/oven, micro-hood, dishwasher, refrigerator, and washer/dryer allow for ease of living. Home Is Connected® - Smart Home system+ and includes energy efficient features\*. Community complete with a pool, parks, a dog park, and more! **Sale Conditions:** None **Schools:** [Ewa](#), [Honouliuli](#), [Kapolei](#) \* [Request Showing](#), [Photos](#), [History](#), [Maps](#), [Deed](#), [Watch List](#), [Tax Info](#)





Address	Price	Bd & Bth	Living / Avg.	Land   Avg.	DOM
<a href="#">91-3641 IWIKUAMOO Street 9203</a>	<a href="#">\$528,665</a>	2 & 2/0	867   \$610	0   \$inf	83

Address	Tax   Maint.   Ass.	Assessed Land	Assessed Building	Assessed Total	Ratio	Year & Remodeled
<a href="#">91-3641 IWIKUAMOO Street 9203</a>	\$0   \$347   \$78	\$0	\$0	\$0	inf%	2024 & NA

[91-3641 IWIKUAMOO Street 9203](#) - MLS#: [202407730](#) - This single-level 2 bedroom, 2-bath condominium with 867 square feet (net) allows for comfortable living. This floor plan offers an open-concept living room. From the living room, step out to the covered lanai to relax and take in the fresh air. The main bedroom has a walk-in closet and ensuite bathroom with a double vanity and shower. The second bedroom has a generously sized closet with mirrored wardrobe doors and the second bathroom features a full-size bathtub. Air conditioning and modern appliances including a range/oven, micro-hood, dishwasher, refrigerator, and washer/dryer allow for ease of living. Home Is Connected® - Smart Home system+ and includes energy efficient features\*. Community complete with a pool, parks, a dog park, and more! **Region:** Ewa Plain **Neighborhood:** Hoopili-nahele **Condition:** Excellent **Parking:** Assigned, Open - 1 **Total Parking:** 1 **View:** Other **Frontage:** Other **Pool:** Zoning: 17 - AMX-2 Medium Density Apt M **Sale Conditions:** None **Schools:** [Ewa](#), [Honouliuli](#), [Kapolei](#) \* [Request Showing](#), [Photos](#), [History](#), [Maps](#), [Deed](#), [Watch List](#), [Tax Info](#)

DOM = Days on Market