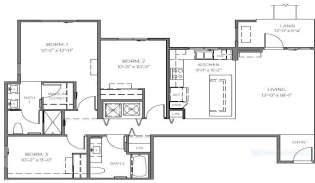


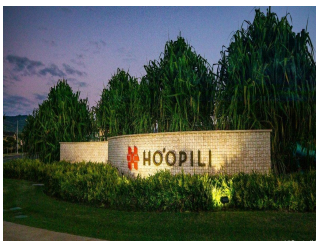
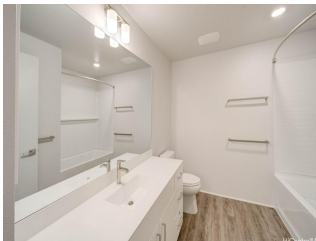
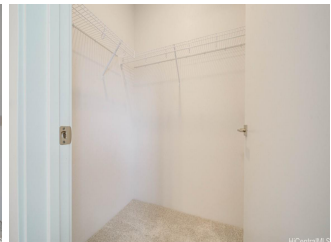
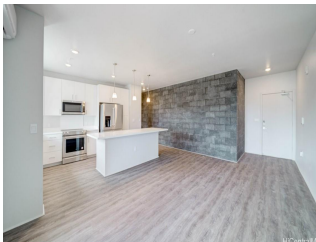
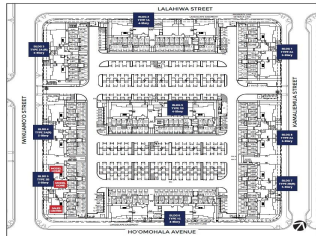
[Nahele at Hoopili 91-3641 IWIKUAMOO Street Unit 8201, Ewa Beach 96706 * \\$687,915](#)

Beds: 3	MLS#: 202407745, FS	Year Built: 2024
Bath: 2/0	Status: Active	Remodeled:
Living Sq. Ft.: 1,225	List Date & DOM: 04-05-2024 & 101	Total Parking: 2
Land Sq. Ft.: 0	Condition: Excellent	Assessed Value
Lanai Sq. Ft.: 0	Frontage: Other	Building: \$0
Sq. Ft. Other: 0	Tax/Year: \$0/0	Land: \$0
Total Sq. Ft. 1,225	Neighborhood: Hoopili-nahele	Total: \$0
Maint./Assoc. \$489 / \$78	Flood Zone : Zone D - Tool	Stories / CPR: 4-7 / No
Parking: Assigned, Garage, Open - 1	Frontage: Other	
Zoning : 17 - AMX-2 Medium Density Apt M	View: Other	

Public Remarks: This single-level 3 Bedroom / 2 bath condominium consists of a spacious living area. The open floor plan with a kitchen island provides for convenient everyday living as well as a backdrop for entertaining. Guests are likely to comment on the cosmopolitan concrete masonry block wall in the main room that adds a chic urban design element. From the living room, step out to the covered lanai to relax and take in the fresh air. First-floor residences include a private yard. The primary bedroom features a walk-in closet and ensuite bathroom with dual sinks and a shower. The second bathroom features a full-size bathtub. This corner unit provides for additional windows and sunlight. Air conditioning and modern appliances including a range/oven, micro-hood, dishwasher, refrigerator, and washer/dryer allow for ease of living. Community complete with a pool, parks, dog park, soccer fields, and more! **Sale Conditions:** None **Schools:** [Ewa](#), [Honouliuli](#), [Kapolei](#) * [Request Showing](#), [Photos](#), [History](#), [Maps](#), [Deed](#), [Watch List](#), [Tax Info](#)



UNIT A31C-R; A31C SIM. | BUILDING TYPE 1C
1,231 net living area sq. ft. | 3 bed, 2 bath
one-car garage and 1 additional parking stall | 1 story



Address	Price	Bd & Bth	Living / Avg.	Land Avg.	DOM
---------	-------	----------	---------------	-------------	-----

91-3641 IWIKUAMOO Street 8201	\$687,915	3 & 2/0	1,225 \$562	0 \$inf	101
---	---------------------------	---------	---------------	-----------	-----

Address	Tax Maint. Ass.	Assessed Land	Assessed Building	Assessed Total	Ratio	Year & Remodeled
91-3641 IWIKUAMOO Street 8201	\$0 \$489 \$78	\$0	\$0	\$0	inf%	2024 & NA

[91-3641 IWIKUAMOO Street 8201](#) - MLS#: [202407745](#) - This single-level 3 Bedroom / 2 bath condominium consists of a spacious living area. The open floor plan with a kitchen island provides for convenient everyday living as well as a backdrop for entertaining. Guests are likely to comment on the cosmopolitan concrete masonry block wall in the main room that adds a chic urban design element. From the living room, step out to the covered lanai to relax and take in the fresh air. First-floor residences include a private yard. The primary bedroom features a walk-in closet and ensuite bathroom with dual sinks and a shower. The second bathroom features a full-size bathtub. This corner unit provides for additional windows and sunlight. Air conditioning and modern appliances including a range/oven, micro-hood, dishwasher, refrigerator, and washer/dryer allow for ease of living. Community complete with a pool, parks, dog park, soccer fields, and more! **Region:** Ewa Plain
Neighborhood: Hoopili-nahele **Condition:** Excellent **Parking:** Assigned, Garage, Open - 1 **Total Parking:** 2 **View:** Other
Frontage: Other **Pool:** **Zoning:** 17 - AMX-2 Medium Density Apt M **Sale Conditions:** None **Schools:** [Ewa](#), [Honouliuli](#), [Kapolei](#) * [Request Showing](#), [Photos](#), [History](#), [Maps](#), [Deed](#), [Watch List](#), [Tax Info](#)

DOM = Days on Market