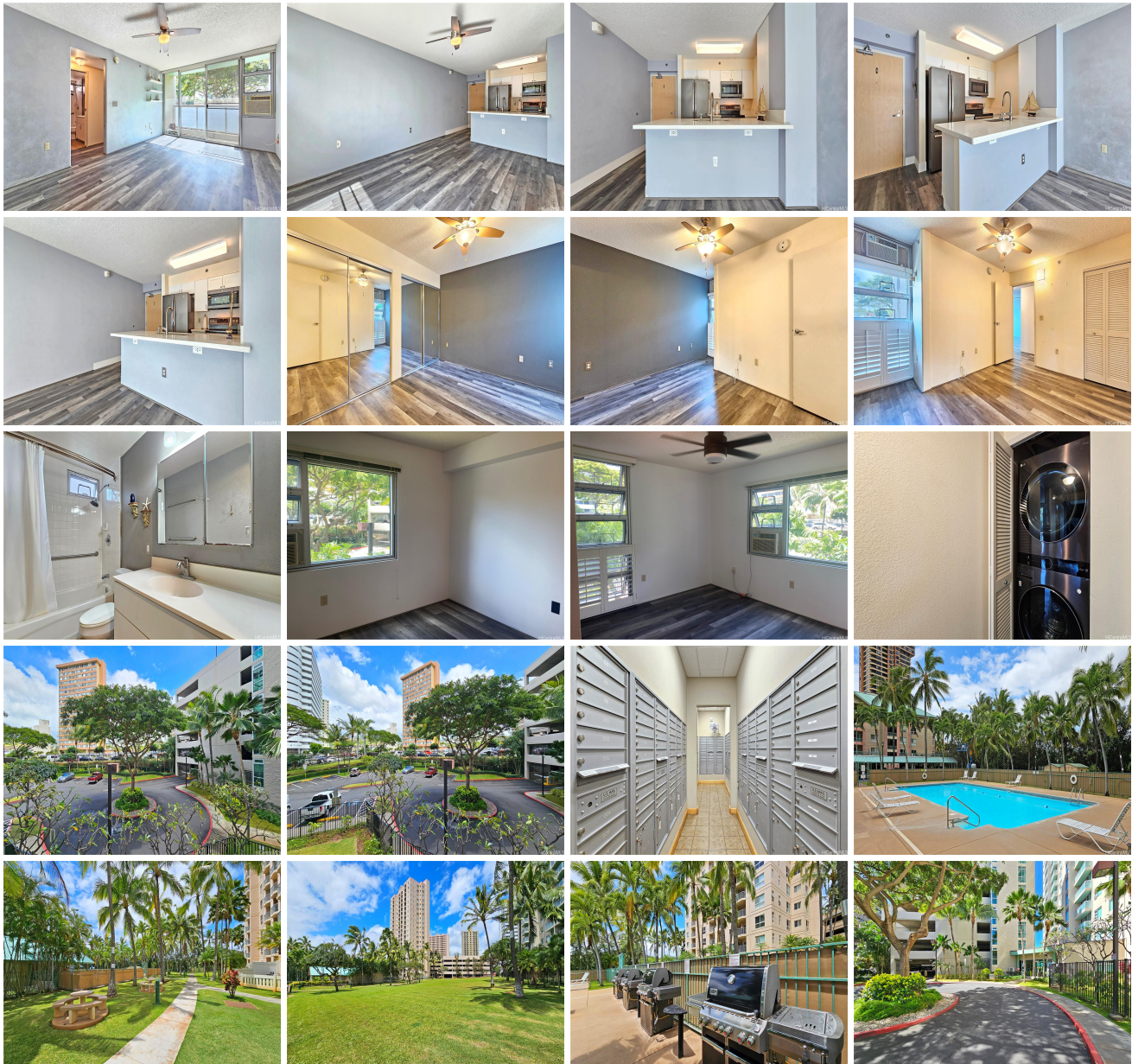


**Country Club Village 6 3009 Ala Makahala Place Unit 214, Honolulu 96818 \* Country Club Village 6 \* \$599,999 \* Originally \$619,000**

Beds: <b>2</b>	MLS#: <b>202407777, FS</b>	Year Built: <b>2008</b>
Bath: <b>1/0</b>	Status: <b>Active</b>	Remodeled: <b>2024</b>
Living Sq. Ft.: <b>784</b>	List Date & DOM: <b>04-10-2024 &amp; 96</b>	Total Parking: <b>2</b>
Land Sq. Ft.: <b>0</b>	Condition: <b>Above Average</b>	<a href="#">Assessed Value</a>
Lanai Sq. Ft.: <b>37</b>	Frontage: <b>Other</b>	Building: <b>\$569,400</b>
Sq. Ft. Other: <b>0</b>	Tax/Year: <b>\$117/2023</b>	Land: <b>\$33,000</b>
Total Sq. Ft. <b>821</b>	Neighborhood: <b>Salt Lake</b>	Total: <b>\$602,400</b>
Maint./Assoc. <b>\$664 / \$0</b>	<a href="#">Flood Zone</a> : <b>Zone D - Tool</b>	Stories / CPR: <b>15-20 / No</b>
Parking: <b>Covered - 2, Guest, Secured Entry, Unassigned</b>	Frontage: <b>Other</b>	
<a href="#">Zoning</a> : <b>12 - A-2 Medium Density Apartme</b>	View: <b>None</b>	

**Public Remarks:** Price Reduced & Rarely available .Country Club Village 6 presents a rare opportunity with this two-bedroom unit. Recently updated flooring in 2024 enhances its appeal. Positioned on the cooler side of the building, this move-in ready space boasts a seamless floor plan, A/C, washer/dryer, and two parking stalls. Residents can indulge in carious amenities such as security services, a pool, BBQ area and ample guest parking. Conveniently situated close to schools, bus stops , and shopping centers, this property offers a lifestyle of convenient. Don't let this chance slip away-schedule a showing today. Tax assessments reflects the year 2023. Two parking are covered and unassigned. **Sale Conditions:** None **Schools:** , , \* [Request Showing, Photos, History, Maps, Deed, Watch List, Tax Info](#)





Address	Price	Bd & Bth	Living / Avg.	Land   Avg.	Lanai	Occ.	FL	DOM
<a href="#">3009 Ala Makahala Place 214</a>	<b>\$599,999</b>	2 & 1/0	784   \$765	0   \$inf	37	45%	2	96

Address	Tax   Maint.   Ass.	Assessed Land	Assessed Building	Assessed Total	Ratio	Year & Remodeled
<a href="#">3009 Ala Makahala Place 214</a>	\$117   \$664   \$0	\$33,000	\$569,400	\$602,400	100%	2008 & 2024

[3009 Ala Makahala Place 214](#) - MLS#: [202407777](#) - Original price was \$619,000 - Price Reduced & Rarely available .Country Club Village 6 presents a rare opportunity with this two-bedroom unit. Recently updated flooring in 2024 enhances its appeal. Positioned on the cooler side of the building, this move-in ready space boasts a seamless floor plan, A/C, washer/dryer, and two parking stalls. Residents can indulge in carious amenities such as security services, a pool, BBQ area and ample guest parking. Conveniently situated close to schools, bus stops , and shopping centers, this property offers a lifestyle of convenient. Don't let this chance slip away-schedule a showing today. Tax assessments reflects the year 2023. Two parking are covered and unassigned. **Region:** Metro **Neighborhood:** Salt Lake **Condition:** Above Average **Parking:** Covered - 2, Guest, Secured Entry, Unassigned **Total Parking:** 2 **View:** None **Frontage:** Other **Pool:** **Zoning:** 12 - A-2 Medium Density Apartme **Sale Conditions:** None **Schools:** , , \* [Request Showing](#), [Photos](#), [History](#), [Maps](#), [Deed](#), [Watch List](#), [Tax Info](#)

DOM = Days on Market, Occ. = Occupancy, FL = Floor Number