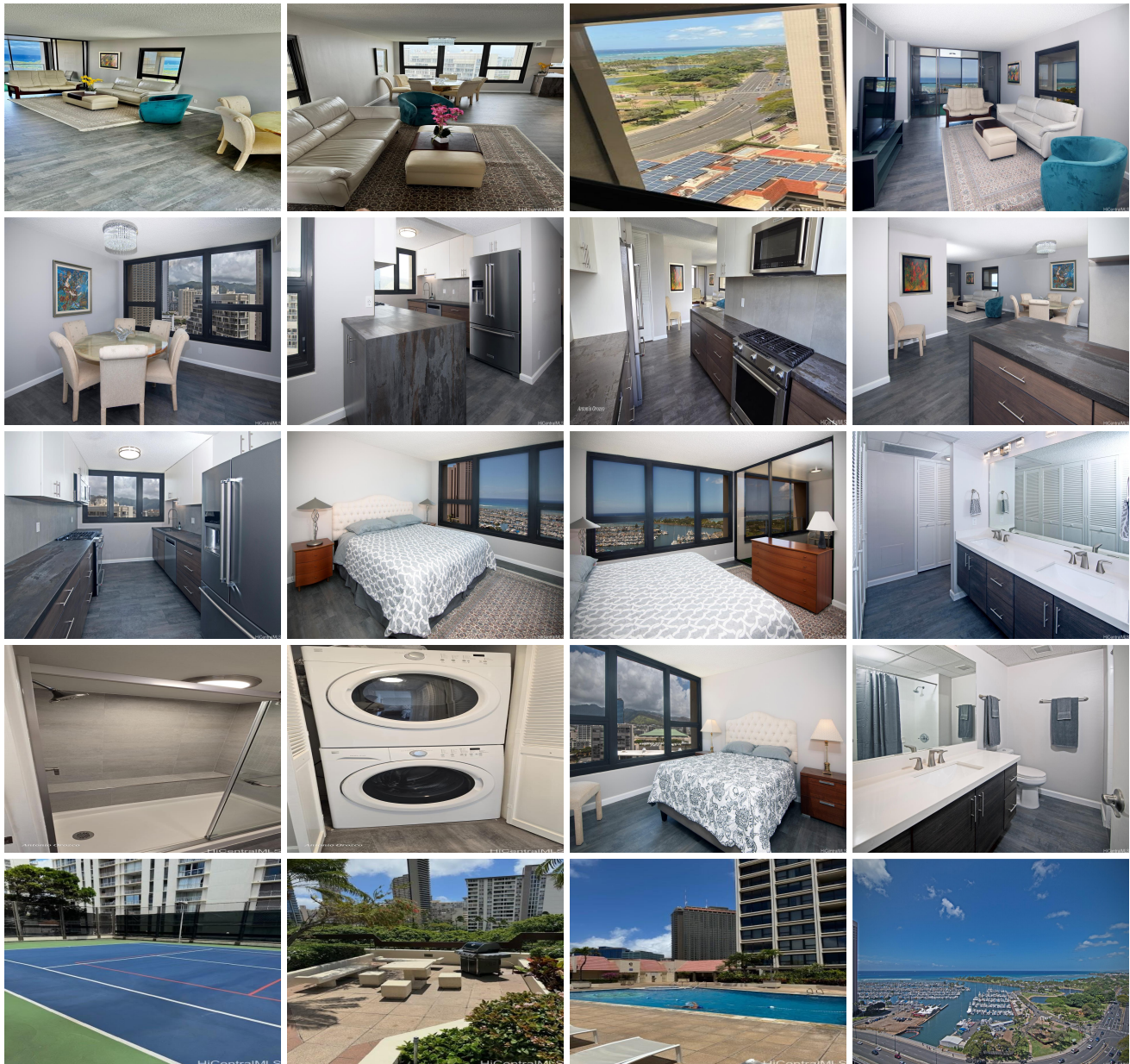


Yacht Harbor Towers 1650 Ala Moana Boulevard Unit 2101, Honolulu 96815 * Yacht Harbor Towers * \$1,149,000 * Originally \$1,249,000

Beds: 2	MLS#: 202407819, FS	Year Built: 1972
Bath: 2/0	Status: Active	Remodeled: 2020
Living Sq. Ft.: 1,495	List Date & DOM: 04-07-2024 & 101	Total Parking: 1
Land Sq. Ft.: 0	Condition: Excellent	Assessed Value
Lanai Sq. Ft.: 0	Frontage:	Building: \$974,100
Sq. Ft. Other: 0	Tax/Year: \$367/2023	Land: \$61,600
Total Sq. Ft. 1,495	Neighborhood: Ala Moana	Total: \$1,035,700
Maint./Assoc. \$1,425 / \$0	Flood Zone : Zone AE - Tool	Stories / CPR: 21+ / No
Parking: Assigned, Covered - 1	Frontage:	
Zoning : 12 - A-2 Medium Density Apartme	View: City, Coastline, Marina/Canal, Mountain, Ocean, Sunrise, Sunset	

Public Remarks: Price Reduced! End Unit, High Floor, Diamond Head Tower with pool below. Fully Furnished!! Easy to show! Total remodel, Beautiful Kitchen and Bathrooms! End units have the extra windows!. Next to Ala Moana Shopping Center and across the street from The Marina and Magic Island. Building has Tennis Court, spa, pool, gym area, covered secured parking, Unobstructed View will never be blocked!! Beautiful furniture included!! Maint. Fee \$1,425.00, LA \$158.00, Reserve \$423.00, Reserve 34.00. **Sale Conditions:** None **Schools:** , , * [Request Showing](#), [Photos](#), [History](#), [Maps](#), [Deed](#), [Watch List](#), [Tax Info](#)





Address	Price	Bd & Bth	Living / Avg.	Land Avg.	Lanai	Occ.	FL	DOM
1650 Ala Moana Boulevard 2101	\$1,149,000	2 & 2/0	1,495 \$769	0 \$inf	0	56%	21	101

Address	Tax Maint. Ass.	Assessed Land	Assessed Building	Assessed Total	Ratio	Year & Remodeled
1650 Ala Moana Boulevard 2101	\$367 \$1,425 \$0	\$61,600	\$974,100	\$1,035,700	111%	1972 & 2020

[1650 Ala Moana Boulevard 2101](#) - MLS#: [202407819](#) - Original price was \$1,249,000 - Price Reduced! End Unit, High Floor, Diamond Head Tower with pool below. Fully Furnished!! Easy to show! Total remodel, Beautiful Kitchen and Bathrooms! End units have the extra windows!. Next to Ala Moana Shopping Center and across the street from The Marina and Magic Island. Building has Tennis Court, spa, pool, gym area, covered secured parking, Unobstructed View will never be blocked!! Beautiful furniture included!! Maint. Fee \$1,425.00, LA \$158.00, Reserve \$423.00, Reserve 34.00. **Region:** Metro **Neighborhood:** Ala Moana **Condition:** Excellent **Parking:** Assigned, Covered - 1 **Total Parking:** 1 **View:** City, Coastline, Marina/Canal, Mountain, Ocean, Sunrise, Sunset **Frontage:** **Pool:** **Zoning:** 12 - A-2 Medium Density Apartme **Sale Conditions:** None **Schools:** , , * [Request Showing](#), [Photos](#), [History](#), [Maps](#), [Deed](#), [Watch List](#), [Tax Info](#)

DOM = Days on Market, Occ. = Occupancy, FL = Floor Number