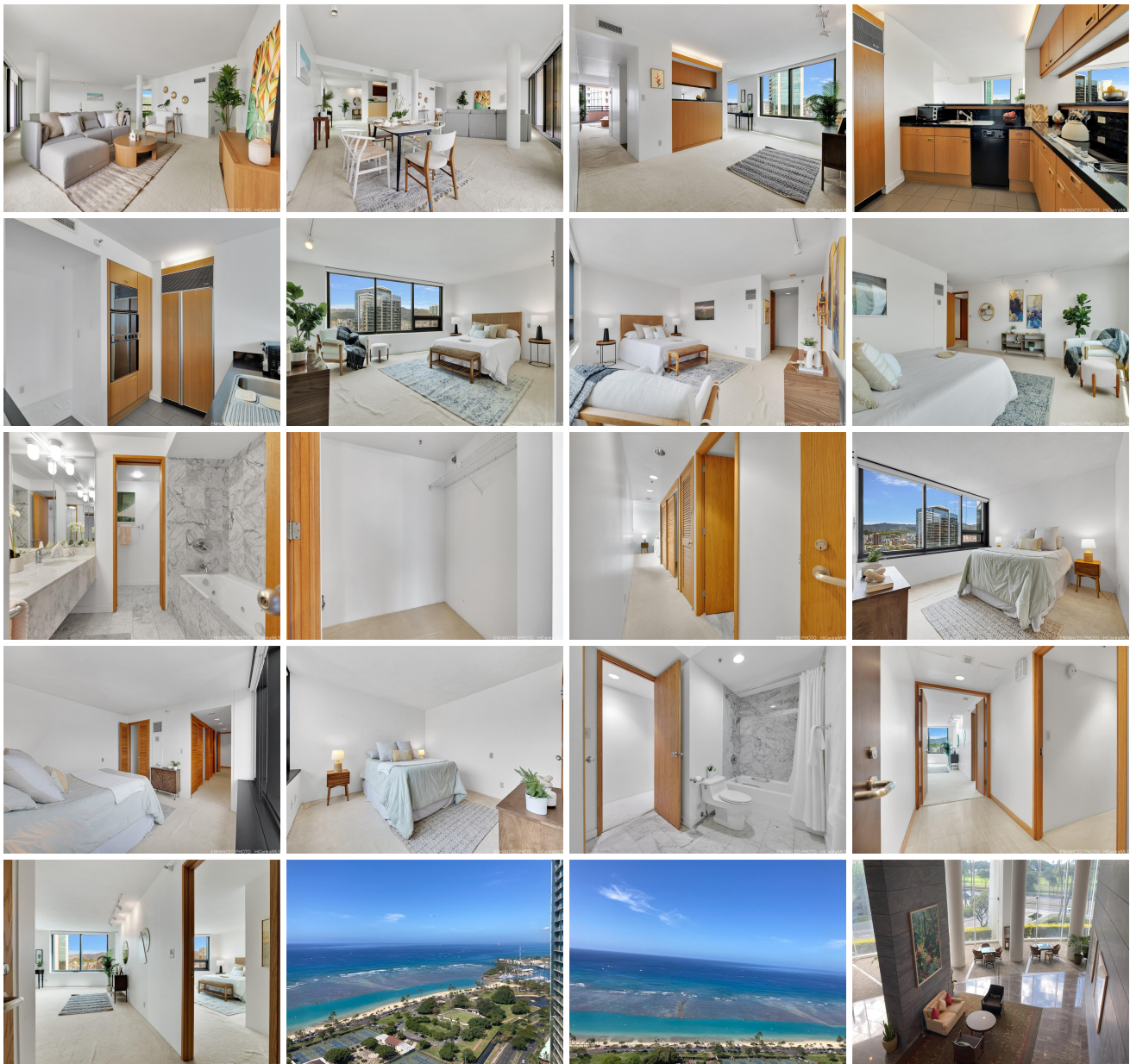


**Nauru Tower 1330 Ala Moana Boulevard Unit 3601, Honolulu 96814 \* \$1,350,000**

Beds: <b>2</b>	MLS#: <b>202407926, FS</b>	Year Built: <b>1990</b>
Bath: <b>2/0</b>	Status: <b>Active</b>	Remodeled:
Living Sq. Ft.: <b>1,892</b>	List Date & DOM: <b>06-06-2024 &amp; 21</b>	Total Parking: <b>2</b>
Land Sq. Ft.: <b>0</b>	Condition: <b>Excellent</b>	<a href="#">Assessed Value</a>
Lanai Sq. Ft.: <b>288</b>	Frontage: <b>Other</b>	Building: <b>\$1,731,000</b>
Sq. Ft. Other: <b>0</b>	Tax/Year: <b>\$1,213/2023</b>	Land: <b>\$153,100</b>
Total Sq. Ft. <b>2,180</b>	Neighborhood: <b>Kakaako</b>	Total: <b>\$1,884,100</b>
Maint./Assoc. <b>\$2,992 / \$0</b>	<a href="#">Flood Zone</a> : <b>Zone AE - Tool</b>	Stories / CPR: <b>21+ / No</b>
Parking: <b>Assigned, Covered - 2, Guest</b>	Frontage: <b>Other</b>	
<a href="#">Zoning</a> : <b>Kak - Kakaako Community Development Project</b>	View: <b>City, Coastline, Diamond Head, Ocean, Other, Sunrise, Sunset</b>	

**Public Remarks:** Spacious 1,892 square feet two bedroom unit with luxurious 288 square feet lanai which you can enjoy spectacular ocean view ! One of a kind property with beautiful views of Ala Moana Beach Park, Magic Island, Ala Wai Boat Harbor and Waikiki ! If you love to shop, you are just few minutes away (walking !) from one of the most well known malls in the country. Don't miss out on this wonderful opportunity to purchase this piece of paradise ! **Sale Conditions:** None  
**Schools:** [Kaahumanu](#), [Washington](#), [Mckinley](#) \* [Request Showing](#), [Photos](#), [History](#), [Maps](#), [Deed](#), [Watch List](#), [Tax Info](#)





Address	Price	Bd & Bth	Living / Avg.	Land   Avg.	DOM
<a href="#">1330 Ala Moana Boulevard 3601</a>	<b>\$1,350,000</b>	2 & 2/0	1,892   \$714	0   \$inf	21

Address	Tax   Maint.   Ass.	Assessed Land	Assessed Building	Assessed Total	Ratio	Year & Remodeled
<a href="#">1330 Ala Moana Boulevard 3601</a>	\$1,213   \$2,992   \$0	\$153,100	\$1,731,000	\$1,884,100	72%	1990 & NA

[1330 Ala Moana Boulevard 3601](#) - MLS#: [202407926](#) - Spacious 1,892 square feet two bedroom unit with luxurious 288 square feet lanai which you can enjoy spectacular ocean view ! One of a kind property with beautiful views of Ala Moana Beach Park, Magic Island, Ala Wai Boat Harbor and Waikiki ! If you love to shop, you are just few minutes away (walking !) from one of the most well known malls in the country. Don't miss out on this wonderful opportunity to purchase this piece of paradise ! **Region:** Metro **Neighborhood:** Kakaako **Condition:** Excellent **Parking:** Assigned, Covered - 2, Guest **Total Parking:** 2 **View:** City, Coastline, Diamond Head, Ocean, Other, Sunrise, Sunset **Frontage:** Other **Pool:** **Zoning:** Kak - Kakaako Community Development Project **Sale Conditions:** None **Schools:** [Kaahumanu](#), [Washington](#), [Mckinley](#) \* [Request Showing](#), [Photos](#), [History](#), [Maps](#), [Deed](#), [Watch List](#), [Tax Info](#)

DOM = Days on Market