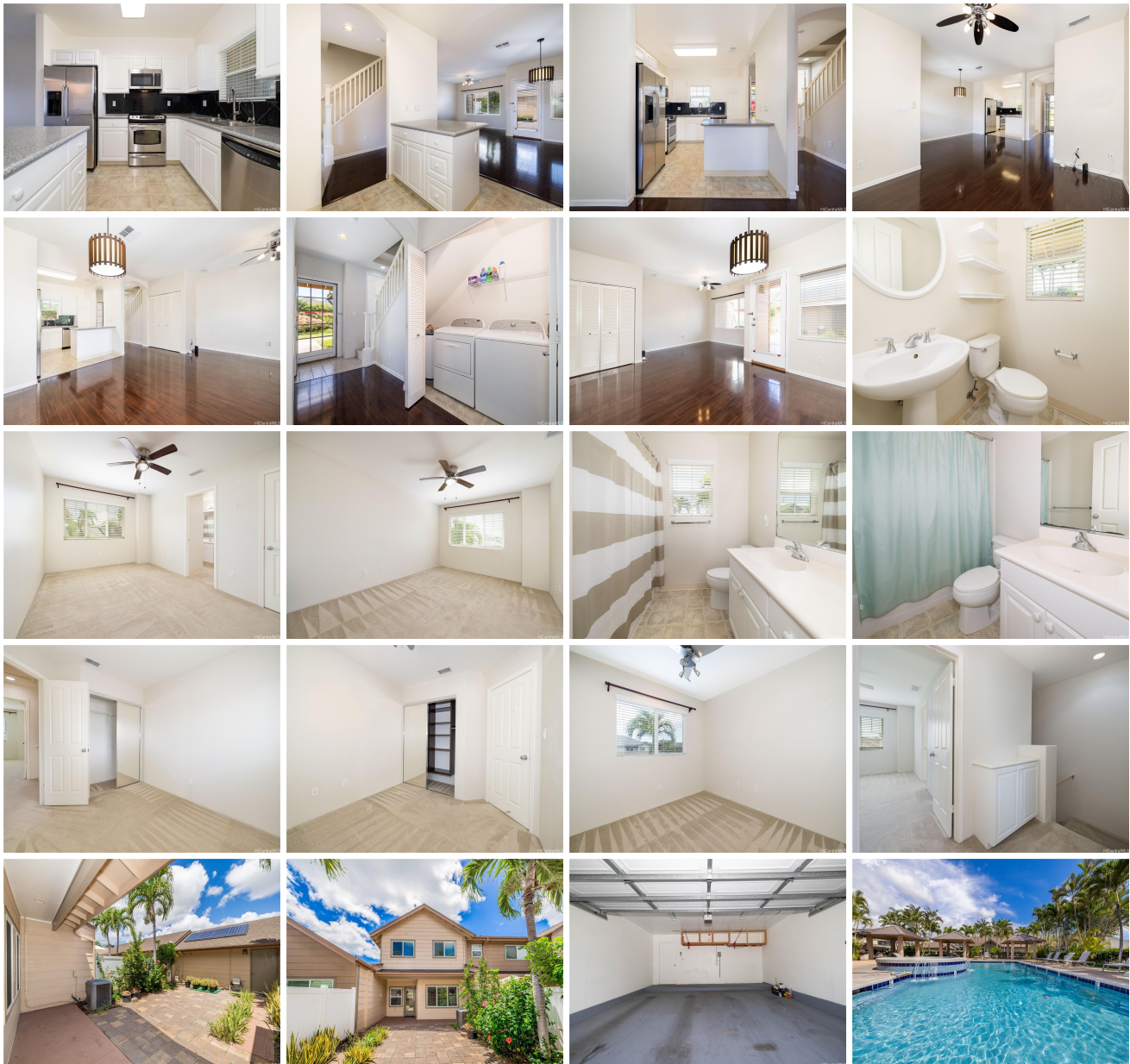


**Town Homes at Fairways Edge 91-2103 Kaioli Street Unit 2204, Ewa Beach 96706 \* Town Homes at Fairways Edge \* \$715,000 \* Originally \$720,000**

Beds: <b>3</b>	MLS#: <b>202407990, FS</b>	Year Built: <b>2007</b>
Bath: <b>2/1</b>	Status: <b>Pending</b>	Remodeled:
Living Sq. Ft.: <b>1,130</b>	List Date & DOM: <b>04-09-2024 &amp; 75</b>	Total Parking: <b>2</b>
Land Sq. Ft.: <b>0</b>	Condition: <b>Above Average</b>	<a href="#">Assessed Value</a>
Lanai Sq. Ft.: <b>133</b>	Frontage:	Building: <b>\$383,800</b>
Sq. Ft. Other: <b>0</b>	Tax/Year: <b>\$203/2024</b>	Land: <b>\$313,100</b>
Total Sq. Ft. <b>1,263</b>	Neighborhood: <b>Ocean Pointe</b>	Total: <b>\$696,900</b>
Maint./Assoc. <b>\$528 / \$0</b>	<a href="#">Flood Zone</a> : <b>Zone D - Tool</b>	Stories / CPR: <b>Two / No</b>
Parking: <b>Garage, Street</b>	Frontage:	
<a href="#">Zoning</a> : <b>11 - A-1 Low Density Apartment</b>	View: <b>Mountain</b>	

**Public Remarks:** Welcome to Townhomes at Fairways Edge, where luxury, convenience, and the vibrant spirit of island life come together seamlessly. This charming 3-bedroom home boasts 26 PV panels ensuring low electric bills, stylish Corian countertops, a backyard perfect for entertaining, and proximity to community amenities such as the pool with a barbecue area. Just minutes away, residents can enjoy Wai Kai activities, the esteemed Hoakalei Country Club featuring an Ernie Els designed golf course, shopping destinations, and much more. **\*\*VA ASSUMABLE LOAN @ 3.25% w/approximately \$183,000.00 in mortgage balance to list price for assumption.** **Sale Conditions:** None **Schools:** [Ewa](#), [Ewa Makai](#), [Campbell](#) \* [Request Showing](#), [Photos](#), [History](#), [Maps](#), [Deed](#), [Watch List](#), [Tax Info](#)





Address	Price	Bd & Bth	Living / Avg.	Land   Avg.	Lanai	Occ.	FL	DOM
<a href="#">91-2103 Kaioli Street 2204</a>	<b>\$715,000</b>	3 & 2/1	1,130   \$633	0   \$inf	133	79%	2	75

Address	Tax   Maint.   Ass.	Assessed Land	Assessed Building	Assessed Total	Ratio	Year & Remodeled
<a href="#">91-2103 Kaioli Street 2204</a>	\$203   \$528   \$0	\$313,100	\$383,800	\$696,900	103%	2007 & NA

[91-2103 Kaioli Street 2204](#) - MLS#: [202407990](#) - Original price was \$720,000 - Welcome to Townhomes at Fairways Edge, where luxury, convenience, and the vibrant spirit of island life come together seamlessly. This charming 3-bedroom home boasts 26 PV panels ensuring low electric bills, stylish Corian countertops, a backyard perfect for entertaining, and proximity to community amenities such as the pool with a barbecue area. Just minutes away, residents can enjoy Wai Kai activities, the esteemed Hoakalei Country Club featuring an Ernie Els designed golf course, shopping destinations, and much more. \*\*VA ASSUMABLE LOAN @ 3.25% w/approximately \$183,000.00 in mortgage balance to list price for assumption. **Region:** Ewa Plain **Neighborhood:** Ocean Pointe **Condition:** Above Average **Parking:** Garage, Street **Total Parking:** 2 **View:** Mountain **Frontage:** **Pool:** **Zoning:** 11 - A-1 Low Density Apartment **Sale Conditions:** None **Schools:** [Ewa](#), [Ewa Makai](#), [Campbell](#) \* [Request Showing](#), [Photos](#), [History](#), [Maps](#), [Deed](#), [Watch List](#), [Tax Info](#)

DOM = Days on Market, Occ. = Occupancy, FL = Floor Number