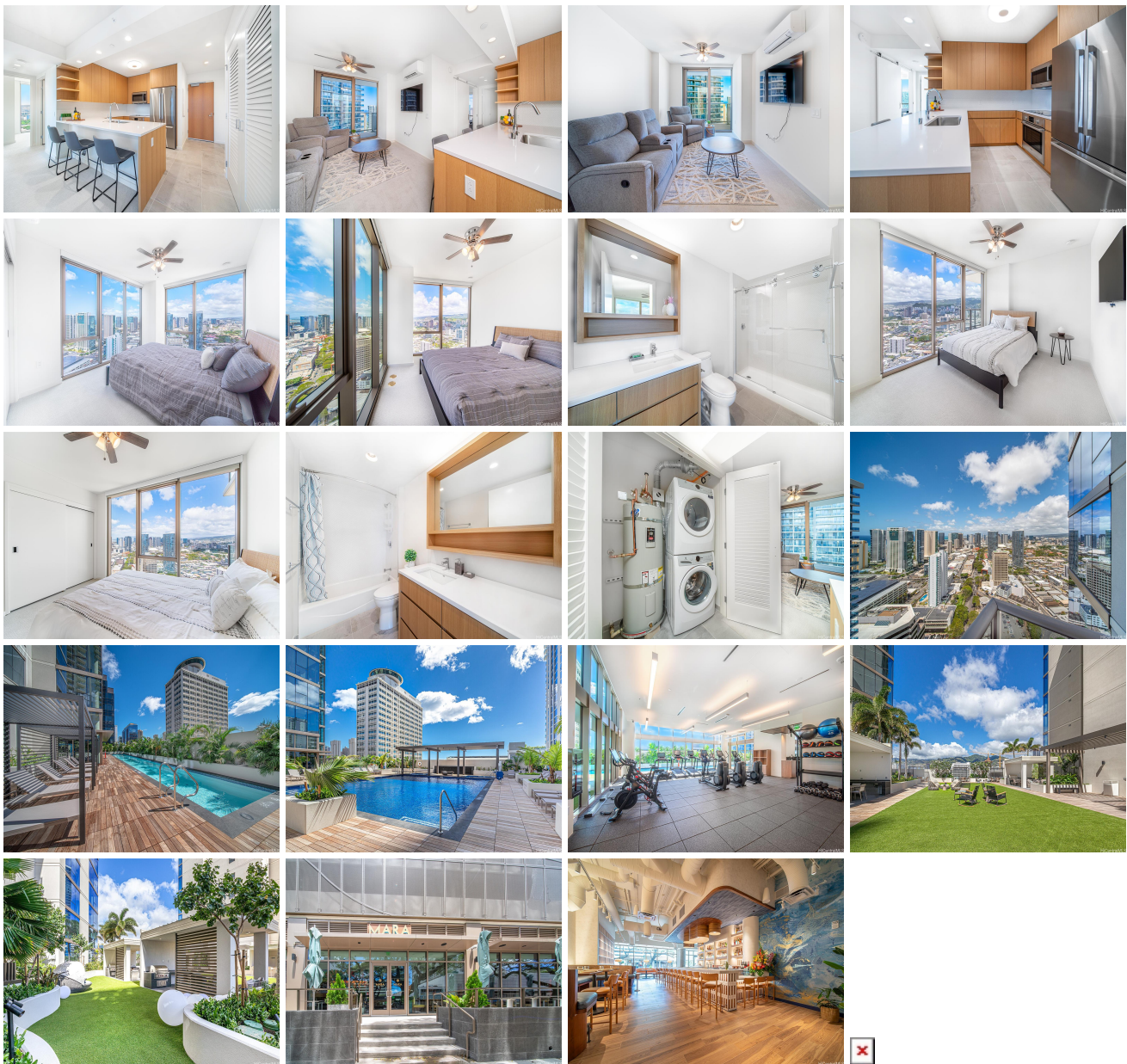


**Sky Ala Moana West 1388 Kapiolani Boulevard Unit 3802, Honolulu 96814 \* Sky Ala Moana**

**West \* \$1,200,000**

Beds: <b>2</b>	MLS#: <b>202407997, FS</b>	Year Built: <b>2023</b>
Bath: <b>2/0</b>	Status: <b>Active</b>	Remodeled:
Living Sq. Ft.: <b>822</b>	List Date & DOM: <b>04-10-2024 &amp; 81</b>	Total Parking: <b>2</b>
Land Sq. Ft.: <b>0</b>	Condition: <b>Excellent</b>	<a href="#">Assessed Value</a>
Lanai Sq. Ft.: <b>91</b>	Frontage:	Building: <b>\$282,400</b>
Sq. Ft. Other: <b>0</b>	Tax/Year: <b>\$99/2023</b>	Land: <b>\$56,400</b>
Total Sq. Ft. <b>913</b>	Neighborhood: <b>Holiday Mart</b>	Total: <b>\$338,800</b>
Maint./Assoc. <b>\$1,079 / \$0</b>	<a href="#">Flood Zone</a> : <b>Zone X - Tool</b>	Stories / CPR: <b>21+ / No</b>
Parking: <b>Assigned, Covered - 2, Guest</b>	Frontage:	
<a href="#">Zoning</a> : <b>33 - BMX-3 Community Business M</b>	View: <b>City, Mountain, Ocean</b>	

**Public Remarks:** Sky Ala Moana West - Brand new building which was just completed late 2023. Unit #3802 is a 2-bedroom/2-bathroom unit with 2 parking and a storage locker. This high floor, corner 2-bedroom unit features wide range of views of Diamond Head, Ocean, City, and Mountain, hardwood flooring, Bosch stainless steel appliance, quartz countertops, and large floor-to-ceiling windows. Residents enjoy hotel like amenities such as resort-pool and lap-pool with poolside bar, whirlpool, barbecue area, dog park, fitness center, spa, playground, party rooms, newly opened restaurant and more! **Sale Conditions:** None **Schools:** , \* [Request Showing](#), [Photos](#), [History](#), [Maps](#), [Deed](#), [Watch List](#), [Tax Info](#)



Address	Price	Bd & Bth	Living / Avg.	Land   Avg.	Lanai	Occ.	FL	DOM
<a href="#">1388 Kapiolani Boulevard 3802</a>	<a href="#">\$1,200,000</a>	2 & 2/0	822   \$1,460	0   inf	91	34%	38	81

Address	Tax   Maint.   Ass.	Assessed Land	Assessed Building	Assessed Total	Ratio	Year & Remodeled
<a href="#">1388 Kapiolani Boulevard 3802</a>	\$99   \$1,079   \$0	\$56,400	\$282,400	\$338,800	354%	2023 & NA

[1388 Kapiolani Boulevard 3802](#) - MLS#: [202407997](#) - Sky Ala Moana West - Brand new building which was just completed late 2023. Unit #3802 is a 2-bedroom/2-bathroom unit with 2 parking and a storage locker. This high floor, corner 2-bedroom unit features wide range of views of Diamond Head, Ocean, City, and Mountain, hardwood flooring, Bosch stainless steel appliance, quartz countertops, and large floor-to-ceiling windows. Residents enjoy hotel like amenities such as resort-pool and lap-pool with poolside bar, whirlpool, barbecue area, dog park, fitness center, spa, playground, party rooms, newly opened restaurant and more! **Region:** Metro **Neighborhood:** Holiday Mart **Condition:** Excellent **Parking:** Assigned, Covered - 2, Guest **Total Parking:** 2 **View:** City, Mountain, Ocean **Frontage:** **Pool:** **Zoning:** 33 - BMX-3 Community Business M **Sale Conditions:** None **Schools:** , , \* [Request Showing](#), [Photos](#), [History](#), [Maps](#), [Deed](#), [Watch List](#), [Tax Info](#)

DOM = Days on Market, Occ. = Occupancy, FL = Floor Number