

**Four Paddle 2140 Kuhio Avenue Unit 2106, Honolulu 96815 \* Four Paddle \* \$579,000 \***

**Originally \$584,000**

Beds: **1**  
Bath: **1/0**  
Living Sq. Ft.: **533**  
Land Sq. Ft.: **0**  
Lanai Sq. Ft.: **55**  
Sq. Ft. Other: **0**  
Total Sq. Ft. **588**  
Maint./Assoc. **\$977 / \$0**

MLS#: **202408118, FS**  
Status: **Active**  
List Date & DOM: **04-17-2024 & 91**  
Condition: **Excellent**  
Frontage:  
Tax/Year: **\$159/2024**  
Neighborhood: **Waikiki**  
**Flood Zone: Zone AO - Tool**

Year Built: **1974**  
Remodeled:  
Total Parking: **2**  
**Assessed Value**  
Building: **\$515,000**  
Land: **\$43,500**  
Total: **\$558,500**  
Stories / CPR: **21+ / No**

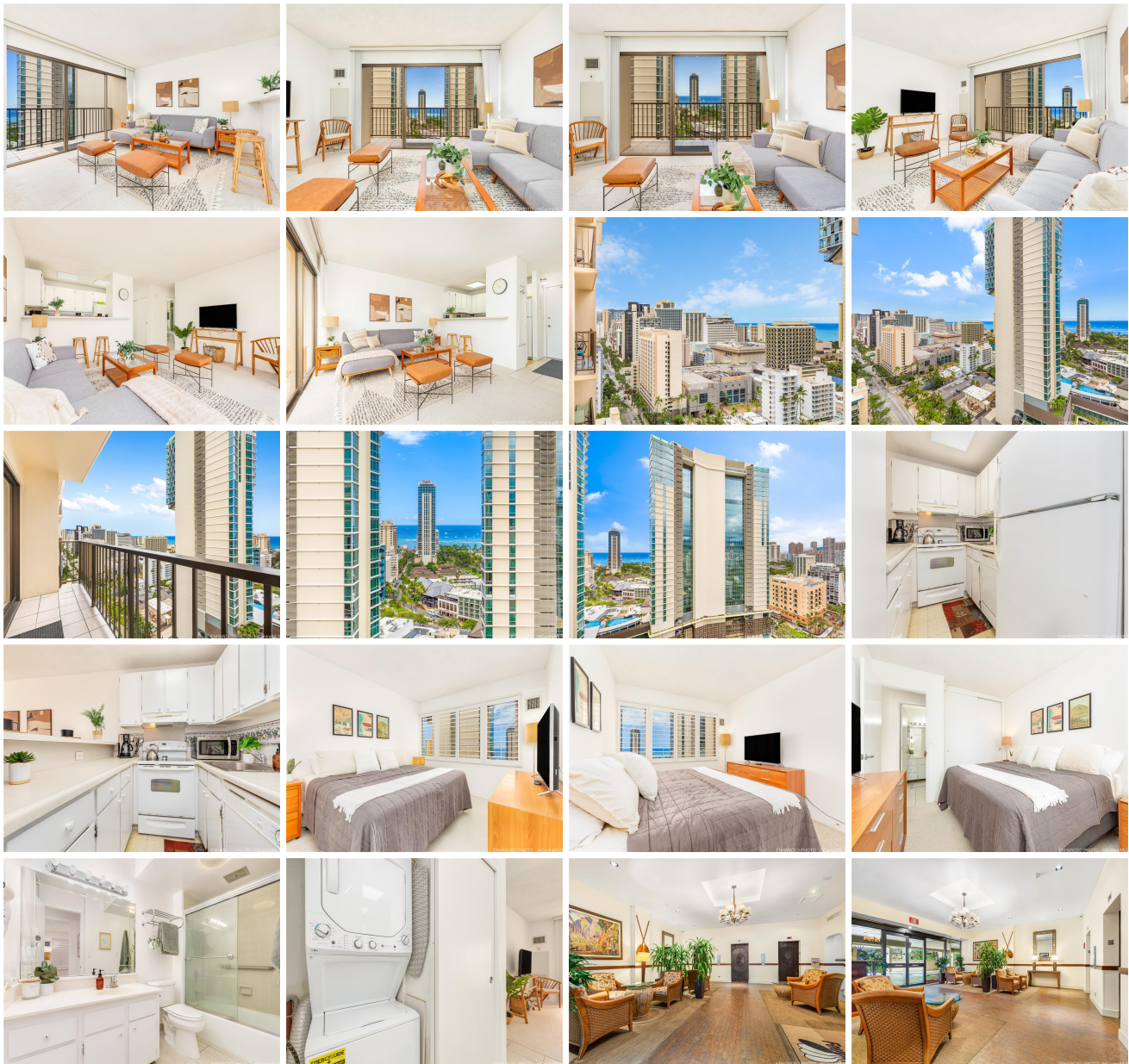
Parking: **Covered - 2, Guest, Secured Entry**

Frontage:

**Zoning: X2 - Apartment Precinct**

View: **Ocean**

**Public Remarks:** Welcome to your own piece of paradise in the heart of Waikiki! This modern and cozy 1-bedroom, 1-bathroom condo (with 2 separate parking stalls) offers a direct breathtaking ocean view, just minutes from the beach and a few blocks from the International Marketplace. Four Paddle amenities include a swimming pool, hot tub, sauna, large recreational area with BBQ, tables, and chairs, ample guest parking, 24-hour security, and a very friendly resident manager! Embrace the ultimate in urban beach living - this is your opportunity for a fantastic lifestyle! **Sale Conditions:** None  
**Schools:** , , \* [Request Showing](#), [Photos](#), [History](#), [Maps](#), [Deed](#), [Watch List](#), [Tax Info](#)





Address	Price	Bd & Bth	Living / Avg.	Land   Avg.	Lanai	Occ.	FL	DOM
<a href="#">2140 Kuhio Avenue 2106</a>	<b>\$579,000</b>	1 & 1/0	533   \$1,086	0   \$inf	55	21%	21	91

Address	Tax   Maint.   Ass.	Assessed Land	Assessed Building	Assessed Total	Ratio	Year & Remodeled
<a href="#">2140 Kuhio Avenue 2106</a>	\$159   \$977   \$0	\$43,500	\$515,000	\$558,500	104%	1974 & NA

[2140 Kuhio Avenue 2106](#) - MLS#: [202408118](#) - Original price was \$584,000 - Welcome to your own piece of paradise in the heart of Waikiki! This modern and cozy 1-bedroom, 1-bathroom condo (with 2 separate parking stalls) offers a direct breathtaking ocean view, just minutes from the beach and a few blocks from the International Marketplace. Four Paddle amenities include a swimming pool, hot tub, sauna, large recreational area with BBQ, tables, and chairs, ample guest parking, 24-hour security, and a very friendly resident manager! Embrace the ultimate in urban beach living - this is your opportunity for a fantastic lifestyle! **Region:** Metro **Neighborhood:** Waikiki **Condition:** Excellent **Parking:** Covered - 2, Guest, Secured Entry **Total Parking:** 2 **View:** Ocean **Frontage:** **Pool:** **Zoning:** X2 - Apartment Precinct **Sale Conditions:** None **Schools:** , , \* [Request Showing](#), [Photos](#), [History](#), [Maps](#), [Deed](#), [Watch List](#), [Tax Info](#)

DOM = Days on Market, Occ. = Occupancy, FL = Floor Number