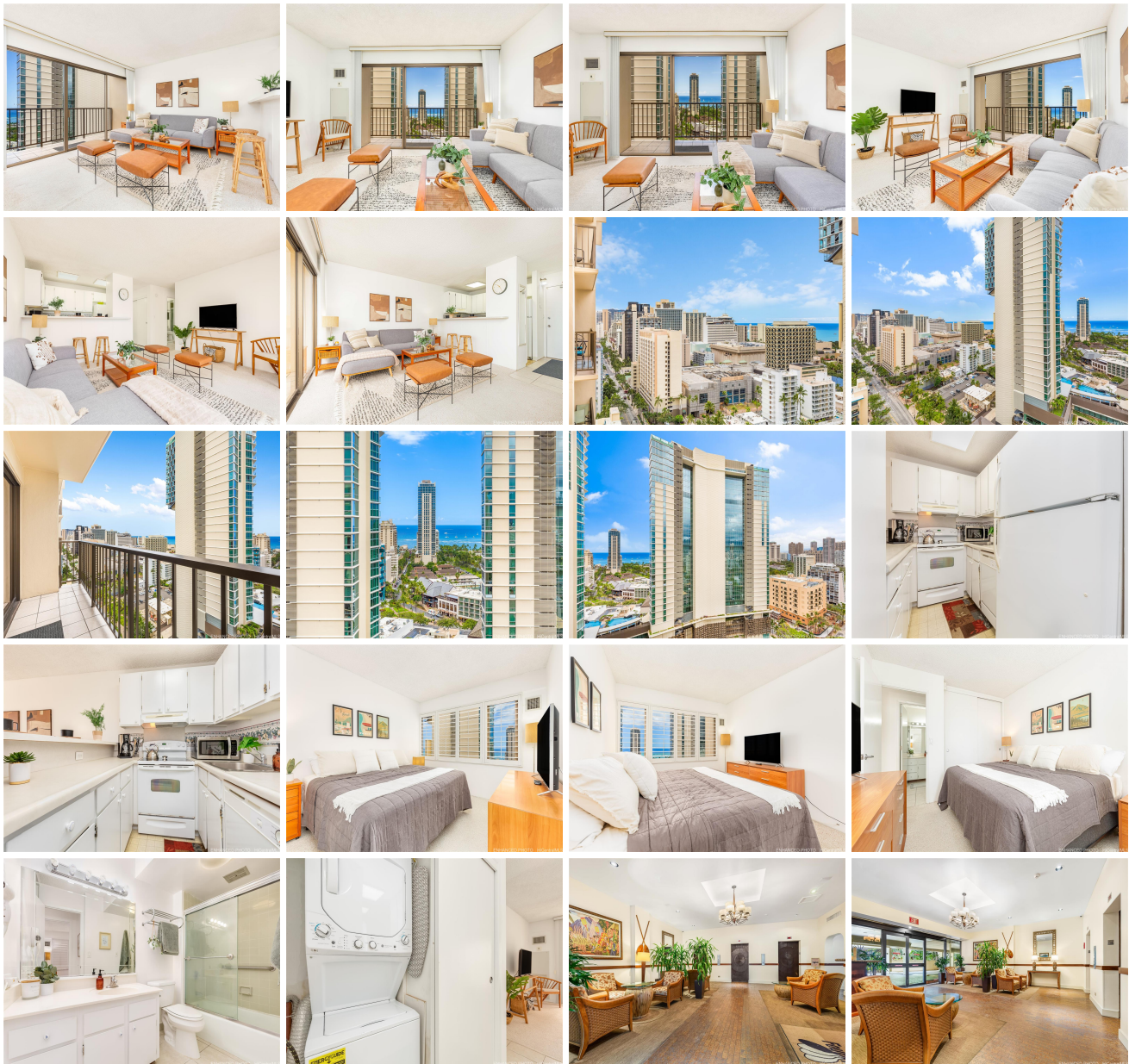


Four Paddle 2140 Kuhio Avenue Unit 2106, Honolulu 96815 * \$579,000 * Originally \$584,000

<p>Beds: 1 Bath: 1/0 Living Sq. Ft.: 533 Land Sq. Ft.: 0 Lanai Sq. Ft.: 55 Sq. Ft. Other: 0 Total Sq. Ft. 588 Maint./Assoc. \$977 / \$0</p>	<p>MLS#: 202408118, FS Status: Active List Date & DOM: 04-17-2024 & 72 Condition: Excellent Frontage: Tax/Year: \$159/2024 Neighborhood: Waikiki Flood Zone: Zone AO - Tool</p>	<p>Year Built: 1974 Remodeled: Total Parking: 2 Assessed Value Building: \$515,000 Land: \$43,500 Total: \$558,500 Stories / CPR: 21+ / No</p>
<p>Parking: Covered - 2, Guest, Secured Entry Zoning: X2 - Apartment Precinct</p>	<p>Frontage: View: Ocean</p>	

Public Remarks: Welcome to your own piece of paradise in the heart of Waikiki! This modern and cozy 1-bedroom, 1-bathroom condo (with 2 separate parking stalls) offers a direct breathtaking ocean view, just minutes from the beach and a few blocks from the International Marketplace. Four Paddle amenities include a swimming pool, hot tub, sauna, large recreational area with BBQ, tables, and chairs, ample guest parking, 24-hour security, and a very friendly resident manager! Embrace the ultimate in urban beach living - this is your opportunity for a fantastic lifestyle! **Sale Conditions:** None
Schools: , , * [Request Showing](#), [Photos](#), [History](#), [Maps](#), [Deed](#), [Watch List](#), [Tax Info](#)





Address	Price	Bd & Bth	Living / Avg.	Land Avg.	DOM
2140 Kuhio Avenue 2106	\$579,000	1 & 1/0	533 \$1,086	0 \$inf	72

Address	Tax Maint. Ass.	Assessed Land	Assessed Building	Assessed Total	Ratio	Year & Remodeled
2140 Kuhio Avenue 2106	\$159 \$977 \$0	\$43,500	\$515,000	\$558,500	104%	1974 & NA

[2140 Kuhio Avenue 2106](#) - MLS#: [202408118](#) - Original price was \$584,000 - Welcome to your own piece of paradise in the heart of Waikiki! This modern and cozy 1-bedroom, 1-bathroom condo (with 2 separate parking stalls) offers a direct breathtaking ocean view, just minutes from the beach and a few blocks from the International Marketplace. Four Paddle amenities include a swimming pool, hot tub, sauna, large recreational area with BBQ, tables, and chairs, ample guest parking, 24-hour security, and a very friendly resident manager! Embrace the ultimate in urban beach living - this is your opportunity for a fantastic lifestyle! **Region:** Metro **Neighborhood:** Waikiki **Condition:** Excellent **Parking:** Covered - 2, Guest, Secured Entry **Total Parking:** 2 **View:** Ocean **Frontage:** **Pool:** **Zoning:** X2 - Apartment Precinct **Sale Conditions:** None **Schools:** , , * [Request Showing](#), [Photos](#), [History](#), [Maps](#), [Deed](#), [Watch List](#), [Tax Info](#)

DOM = Days on Market